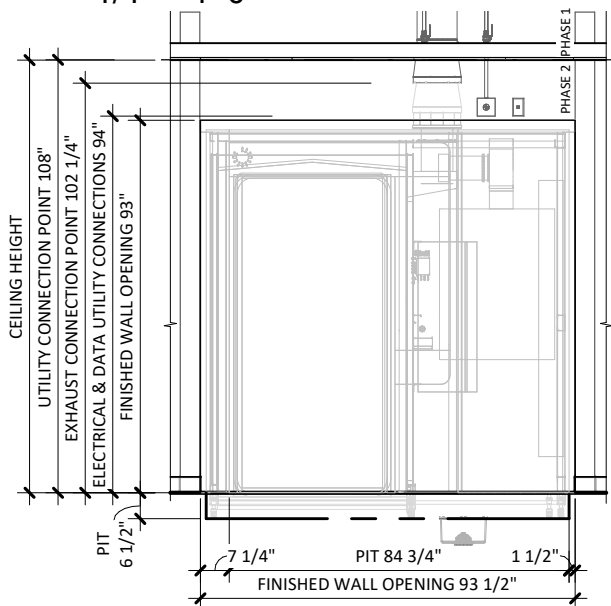
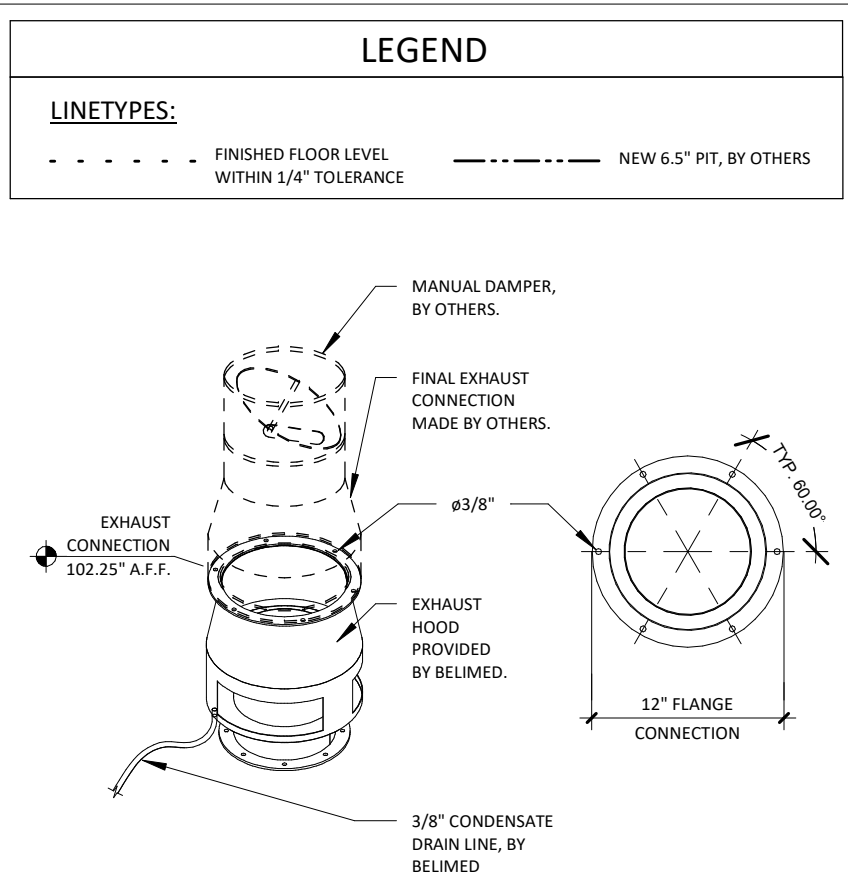


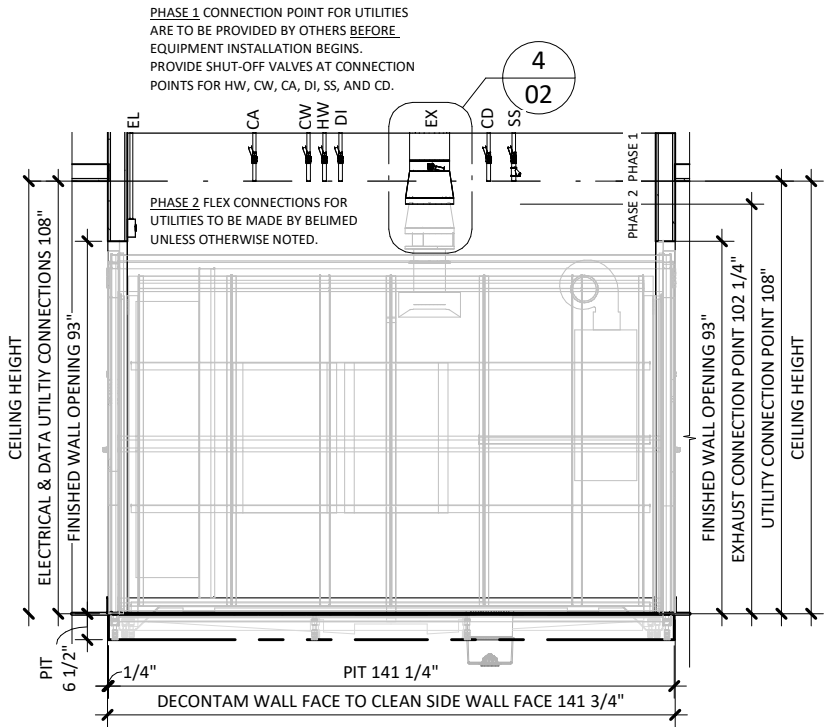
1 UTILITY LAYOUT
1/4" = 1'-0"



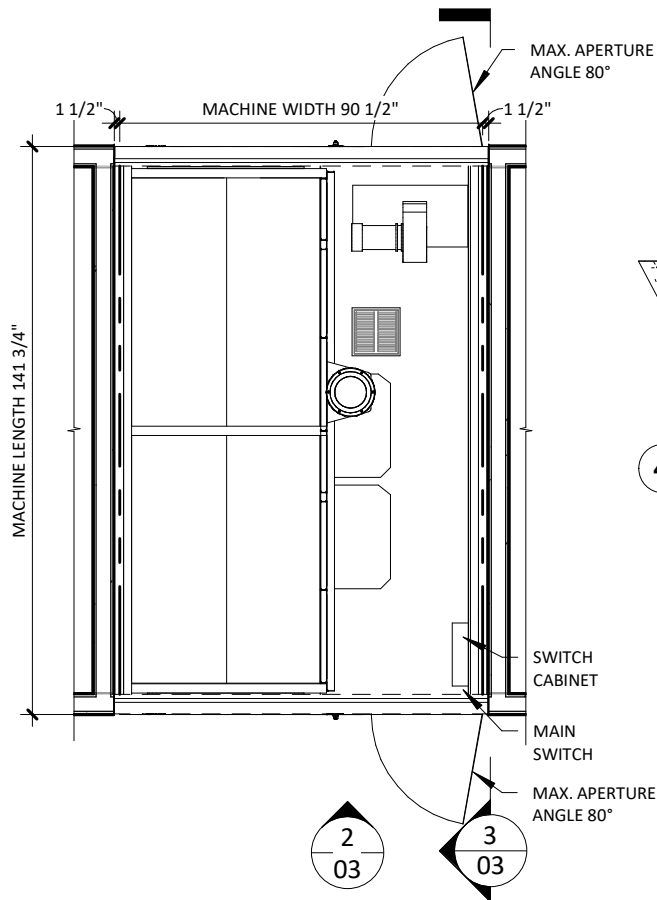
2 UTILITY FRONT ELEVATION
1/4" = 1'-0"



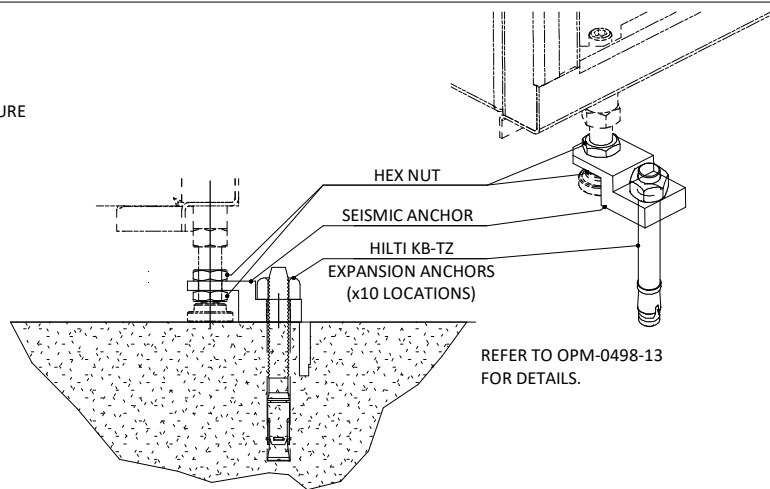
4 WD750 EXHAUST CONNECTION
1" = 1'-0"



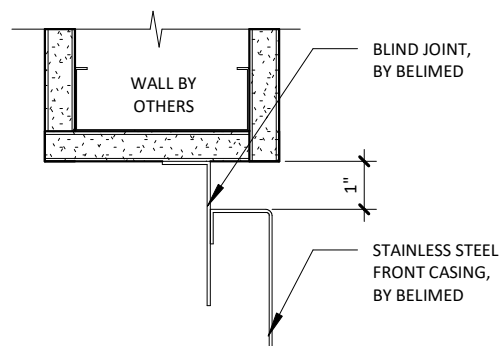
3 UTILITY SIDE ELEVATION
1/4" = 1'-0"



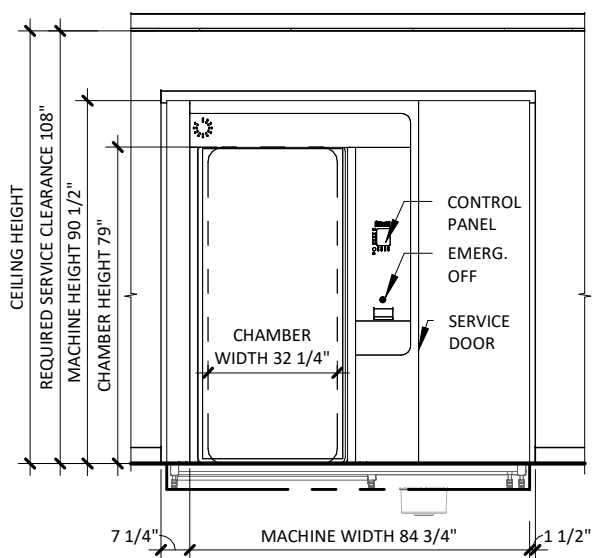
1 EQUIPMENT PLACEMENT PLAN
1/4" = 1'-0"



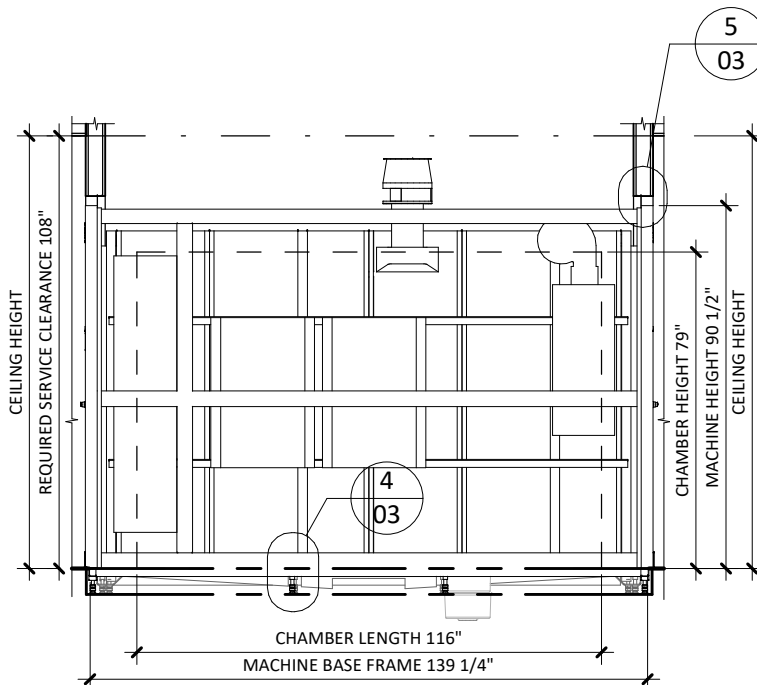
4 SEISMIC ANCHORING DETAIL
3/8" = 1'-0"



5 TRIM ATTACHMENT - WD750
3" = 1'-0"



2 EQUIPMENT FRONT ELEVATION
1/4" = 1'-0"



3 EQUIPMENT SIDE ELEVATION
1/4" = 1'-0"

WASHER/DISINFECTOR MODEL WD750L - TECHNICAL SPECIFICATIONS

REQUIRED INPUTS

Symbol	Description	Value	Utility Notes	Connection Method	Final Utility Conn. By:
				Others	Belimed
SS	Utility:	Steam Supply	Steam must be dry, saturated, free from all impurities such as gases, oil, dirt, or other contaminants. Provide steam strainer with #100 mesh size. All steam drops must be piped from top of steam supply line.	Hard Pipe	X
	Connection Size/Type:	1.0 Inch / MNPT			
	Pressure:	Min: 40.0 psig Max: 50.0 psig			
	Peak Consumption:	17.0 lbs/min			
	*Consumption per Load:	110.0 - 154.0 lbs			
HW	Utility:	Hot Water	Water must be softened to 0-60 ppm. Minimum water temperature is 120°F. (Colder HW temperature will result in longer cycles and higher steam consumption).	Flex	X
	Connection Size/Type:	1.0 inch / MNPT			
	Pressure:	Min: 30.0 psig Max: 50.0 psig			
	Cart Cycle				
	Peak Consumption:	13.2 gal/min			
	*Consumption per Load:	55.0 gal			
	Instrument Cycle				
CW	Utility:	Cold Water	Water must be softened to 0-60 ppm.	Flex	X
	Connection Size/Type:	1.0 inch / MNPT			
	Pressure:	Min: 30.0 psig Max: 50.0 psig			
	Peak Consumption:	13.2 gal/min			
	*Consumption per Load:	42.0 gal			
DI	Utility:	Deionized Water	Deionized (DI) or Reverse Osmosis (RO) used with a conductivity of less than or equal to 15µS/cm. Slower flow rates will result in longer cycle times.	Flex	X
	Connection Size/Type:	1.0 inch / MNPT			
	Pressure:	Min: 30.0 psig Max: 50.0 psig			
	Peak Consumption:	13.2 gal/min			
	*Consumption per Load:	42.0 gal			
EL	Utility:	Electric	208V, 3 phase, 60 Hz, 25A circuit protection with straight blade receptacle: NEMA 15-30R; Grainger part No. 5Z889	Receptacle	X
	Connection Type:	Junction box w/receptacle			
	Voltage (Phase):	3 Phase			
	Voltage (Nominal):	208 VAC			
	Voltage (Frequency):	60 Hz			
	Circuit Protection:	25 Amps			
	Peak Consumption:	20 Amps			
CA	Utility:	Compressed Air	Air must be dry and oil free. CA is used for pneumatic controls.		X
	Connection Size/Type:	1/4 Inch / MNPT			
	Pressure:	Min: 90.0 psig Max: 110.0 psig			
	Peak Consumption:	7.1 CFM			
	*Consumption per Load:	8.8 CF			
DP	Utility:	Data Port	Location: Preferred Ethernet port location is in the enclosed service area of the washer/disinfector or within 5 ft of machine		X
	Connection Type:	RJ45 Receptacle			
	Connection Quantity:	One (1) RJ45 Ethernet port per mach.			
	Facility Wiring:	Cat-5 or better			
	Final Connection:	Patch cables for final conn. provided			
	Port IP Setup:	Each RJ45 requires static IP address			

ESTIMATED EMISSIONS

CD	Utility:	Condensate	Condensate removal by customer per local code. Arising condensate has to be returned without pressure.	Hard Pipe	X
	Connection Size/Type:	1.0 Inch / MNPT			
DR	Utility:	Open Drain	Provide floor sink or trench drain and trap.	4" Copper	X
	Drain Outlet:	4.0 Inch			
	Discharge Flow Rate:	50.0 gal/min			
	Connection Type:	Indirect Drain			
EX	Medium:	Air Exhaust	Duct should be pitched back to unit. Duct materials: Galvanized steel, polyethylene, and stainless steel. Belimed to provide exhaust adapter. Manual damper to be provided by others.	Rigid Duct Fitting	X
	Connection Size:	12.0 Inch			
	Peak Flow Rate:	1059.0 CFM			
	Minimum Duct Diameter:	10.0 Inch			
	Medium:	Heat Radiation	Equipment room heat radiation will vary due to steam pipe insulation by others.		
	Load side radiation:	700 W			
	Unload side radiation:	700 W			
	Equip. room radiation:	2500 W			
	Total radiation:	6400 W			
	Medium:	Noise Radiation			
	Maximum Radiation(Net):	< 70 dBA			

PHYSICAL SPECIFICATIONS

	Parameter:	Carry-In Dimensions¹	Usable Chamber Dim.	¹ Largest item to be carried in is sump pan.
	Height:	6.5 in	79.0 in	
	Width:	47.3 in	32.3 in	
	Length:	126.0 in	116.0 in	
	Parameter:	Weights		
	Operating Weight:	6684.0 lbs	Operating Weight = Machine + Water + Two Carts	
	OSHPD NUMBER:	OPM-0498-13		

*Values are for a Normal Cycle".

Additional Information:

MNPT = Male Pipe Thread

For alternate utility connections, please contact Belimed.

Others must provide back flow prevention for water supply.

Others must provide service valves for steam and water supply, and recommended steam pressure gauge.

All utility supplies and connections are to be provided by others, per local code.

Belimed recommends for others to apply a liquid waterproof membrane to pit or area underneath washer/disinfector.

Pit dimensions are the required finished measurements including the application of any liquid waterproofing membrane.

TS-WD750L_RevD