

BeliMed

Infection Control

2284 Clements Ferry Road, Charleston, SC 29492

Tel: (800) 457-4117 Web: www.belimed.us

BELIMED WD200E

ELECTRIC MODEL WASHER/DISINFECTOR

Typical installation of a Belimed WD200E Washer/Disinfector.

Dwg. No. : CUT-WD200E

Rev. : E

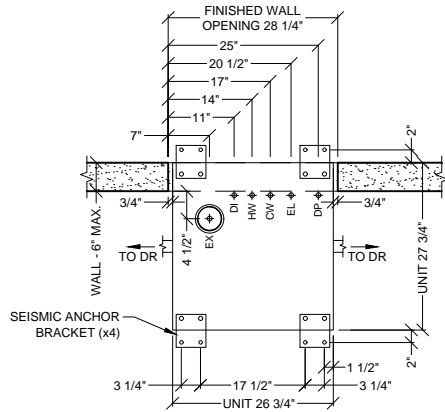
Drawn By : A. HERRON

Date : 7/6/16

Scale : NTS

Page : 1 of 4

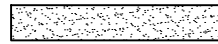
CLEAN SIDE



DECONTAM SIDE

LEGEND

HATCH TYPES:



WALLS, BY OTHERS

SYMBOLS:



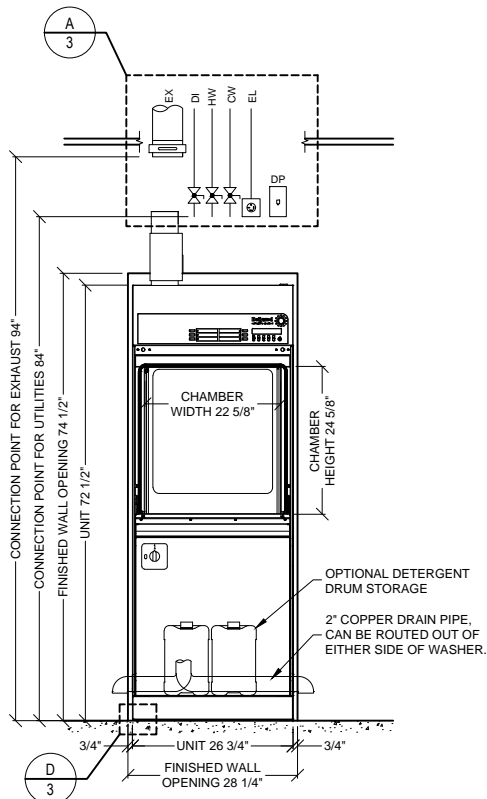
SERVICE SHUT-OFF VALVE, BY OTHERS



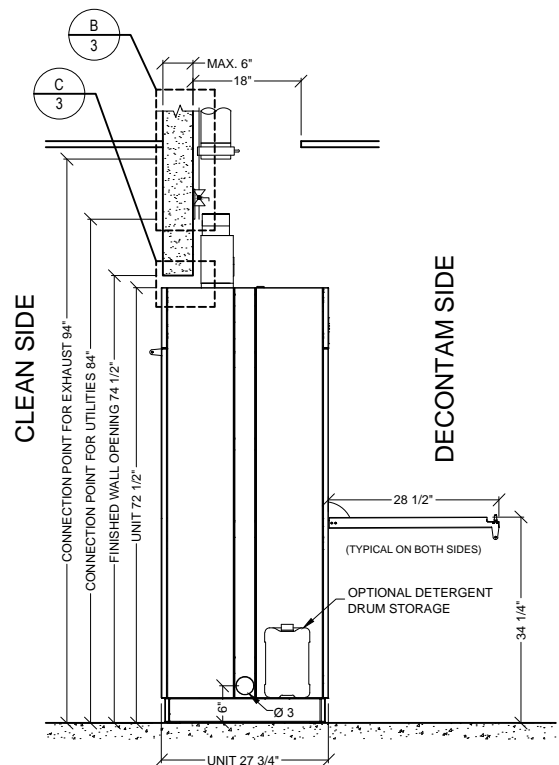
MANUAL EXHAUST DAMPER, BY OTHERS

**FOR INSTALLATIONS WHERE THE WALL THICKNESS IS GREATER THAN 6", FINISHED WALL OPENING HEIGHT MUST BE 85.5" AND KIT-085 MUST BE PURCHASED.

PLAN VIEW



DECONTAM ELEVATION



SIDE ELEVATION

BeliMed

Infection Control

2284 Clements Ferry Road, Charleston, SC 29492
Tel: (800) 457-4117 Web: www.belimed.us

BELIMED WD200E ELECTRIC MODEL WASHER/DISINFECTOR

TECHNICAL DRAWING

Typical installation of a Belimed WD200E Washer/Disinfector.

Dwg. No. : CUT-WD200E

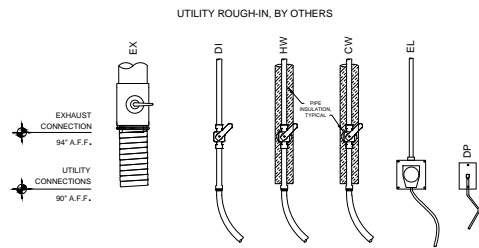
Rev. : E

Drawn By : A. HERRON

Date : 7/6/16

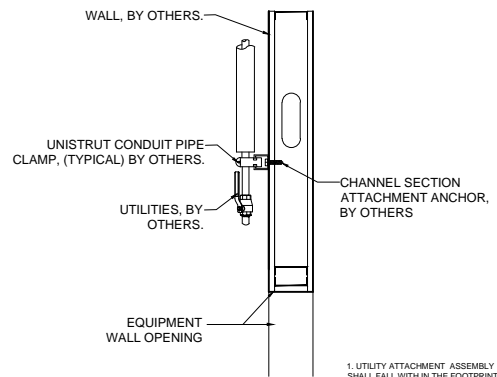
Scale : 3/8" = 1'

Page : 2 of 4



EX - EXHAUST
HW - HOT WATER
CW - COLD WATER
DI - DEIONIZED WATER
EL - ELECTRICAL (WASHER)
DP - DATA PORT

1. REFER TO EQUIPMENT PLUMBING, MECHANICAL AND ELECTRICAL PLANS FOR UTILITY LOCATIONS.
2. SEE TECHNICAL SPECIFICATIONS FOR UTILITY SIZING, INPUT REQUIREMENTS AND FINAL CONNECTIONS.

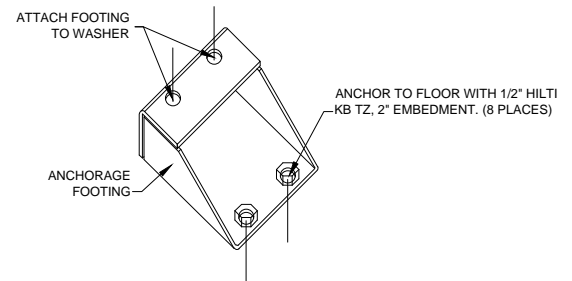
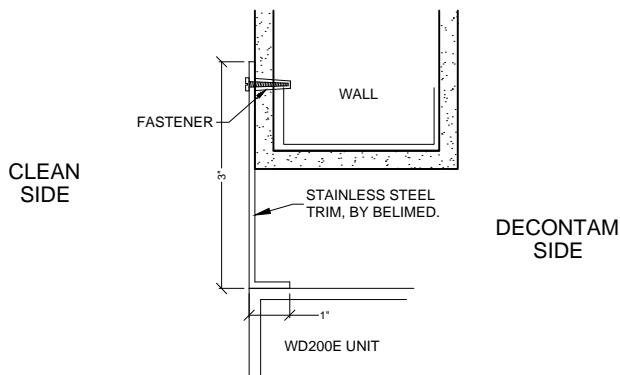


NOTE: REFER TO LOCAL BUILDING CODES AND/OR SEISMIC ANCHORAGE REQUIREMENTS FOR FINAL ATTACHMENT METHOD.

1. UTILITY ATTACHMENT ASSEMBLY SHALL FALL WITH IN THE FOOTPRINT OF THE SPECIFIED EQUIPMENT.
2. REFER TO EQUIPMENT PLUMBING, MECHANICAL AND ELECTRICAL PLANS FOR UTILITY LOCATIONS.
3. SEE TECHNICAL SPECIFICATIONS FOR UTILITY SIZING, INPUT REQUIREMENTS, AND FINAL CONNECTIONS.

A TYPICAL UTILITY LAYOUT
WD200E WASHER - (ELECTRIC)
N.T.S.

B RECOMMENDED TYPICAL WALL HUNG
UTILITY ATTACHMENT DETAIL (SIDE VIEW)
N.T.S.



DETAIL FOR REGIONS REQUIRING SEISMIC ANCHORAGE.

C TYP. TRIM ATTACHMENT DETAIL
WD200E WASHER
N.T.S.

D TYP. SEISMIC ANCHORING DETAIL
WD200 WASHER
N.T.S.

WD200E WASHER/DISINFECTOR - TECHNICAL SPECIFICATIONS						
REQUIRED INPUTS						
Symbol	Description	Value	Utility Notes	Connection Method	Final Utility Conn. By:	
					Others	Belimed
HW	Utility:	Hot Water	Recommended hot water total CaCO ₃ less than 200 ppm. Minimum temperature of 120°F. (Colder HW temperature will result in longer cycles and higher energy consumption.)	Flex		X
	Connection Size/Type:	3/4 inch MNPT				
	Pressure:	Min: 30 Max: 90 psig				
	Peak Consumption:	10.6 gal/min				
	*Consumption per Load:	12.8 gal				
CW	Utility:	Cold Water	Recommended cold water total CaCO ₃ less than 200 ppm. Maximum temperature of cold water is 35°C (95°F).	Flex		X
	Connection Size/Type:	3/4 inch MNPT				
	Pressure:	Min: 30 Max: 90 psig				
	Peak Consumption:	10.6 gal/min				
	*Consumption per Load:	6.4 gal				
DI	Utility:	Deionized Water	Deionized (DI) or Reverse Osmosis (RO) water can be used with a conductivity <15 µS/cm. (Slower flow rate results in longer cycle times.)	Flex		X
	Connection Size/Type:	3/4 inch MNPT				
	Pressure:	Min: 30 Max: 90 psig				
	Operating Consumption:	Min: 2 Max: 10.6 gal/min				
	*Consumption per Load:	6.4 gal				
EL	Utility:	Electric	Peak amperage consumption occurs during thermal disinfection stage. Receptacle: Grainger Part Number - 5Z891	Receptacle		X
	Connection Type:	NEMA 15-50R Receptacle				
	Voltage (Phase):	3 Phase				
	Voltage (Nominal):	208 V				
	Voltage (Frequency):	60 Hz				
	Circuit Protection:	50 Amps				
	Peak Consumption:	43 Amps				
	*Consumption per Load:	3.9 kW-h				
DP	Utility:	Data Port (Optional)	Location: Preferred Ethernet port location is in the enclosed service area of the washer/disinfector or within 5 ft of machine			X
	Connection Type:	RJ45 Receptacle				
	Connection Quantity:	One (1) RJ45 Ethernet port per machine				
	Facility Wiring:	Cat-5 or better				
	Final Connection:	Patch cables for final connection provided				
	Port IP Setup:	Each RJ45 requires static IP address				

ESTIMATED EMISSIONS						
DR	Utility:	Open Drain	Provide flush mounted floor sink and trap.	2" copper pipe	X	
	Connection Size:	2 inch				
	Discharge Flow Rate:	40 gal/min				
	Connection Type:	Indirect Drain				
EX	Medium:	Air Exhaust	Discharged air is at 100% humidity, others must provide proper drainage upstream as needed. Others to provide manual style manual damper at each exhaust connection point.	Flex		X
	Connection Size:	5 inch OD				
	Peak Flow Rate:	130 cfm ± 10%				
	Minimum Duct Diameter:	5 inch				
	Duct Materials (in order of recommended use):	stainless steel, galvanized steel, polyethylene, or aluminum				
	Medium:	Heat Radiation	Free Standing Machine. Variation due to program variability in Ao value, dry time, and dry temperatures.			
	Radiation (Net):	500 W				
	Radiation (Tolerance):	+/- 200 W				
	Medium:	Noise Radiation	Temporary maximum of 73 dBA during drying phase.			
	Maximum Radiation (Net):	61 dBA				

PHYSICAL SPECIFICATIONS						
	Parameter:	Carry-In Dimensions	Machine alone (i.e. removed from packaging)			
	Height:	72.5 in				
	Width:	26.7 in				
	Length:	27.9 in				
	Parameter:	Weights	Transport Weight = (Machine + Crating) Operating Weight = (Machine + Water)			
	Transport Weight:	660 lbs				
	Operating Weight:	675 lbs				
	Parameter:	OSHPD				
	OSHPD NUMBER:	OPM-0250-13				

* Values are for an "General Instrument Cycle". Values will vary with rack size, load size, utility inputs, detergents and cycle setup.


Additional Information:

MNPT = Male Pipe Thread

Maximum finished floor level tolerance is 1/4" for washer.

All utility supplies and connections are to be provided by others, per local code.

TS-WD200E-Rev_E

 <p>Belimed Infection Control</p> <p>2284 Clements Ferry Road, Charleston, SC 29492 Tel: (800) 457-4117 Web: www.belimed.us</p>	BELIMED WD200E ELECTRIC MODEL WASHER/DISINFECTOR		
	TECHNICAL SPECIFICATIONS		Dwg. No. : CUT-WD200E Rev. : E
	Typical installation of a Belimed WD200E Washer/Disinfector.		Drawn By : A. HERRON Date : 7/6/16
			Scale : NTS Page : 4 of 4