

**BeliMed**

Infection Control

2284 Clements Ferry Road, Charleston, SC 29492  
Tel: (800) 457-4117 Web: [www.belimed.us](http://www.belimed.us)

# BELIMED WD200ED

ELECTRIC MODEL WASHER/DISINFECTOR W/ DI PRE-HEATER

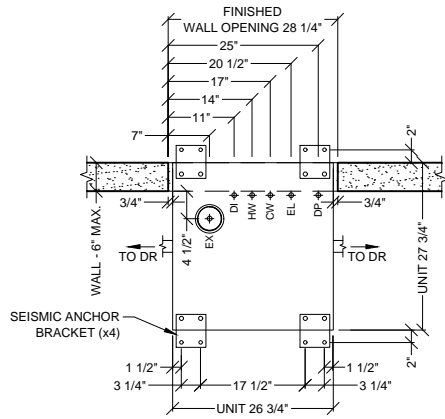
Typical installation of a Belimed WD200ED Washer/Disinfector.

Dwg. No.: CUT-WD200ED Rev.: E

Drawn By: A. HERRON Date: 7/6/16

Scale: NTS Page: 1 of 4

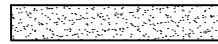
# CLEAN SIDE



# DECONTAM SIDE

## LEGEND

### HATCH TYPES:



WALLS, BY OTHERS

### SYMBOLS:

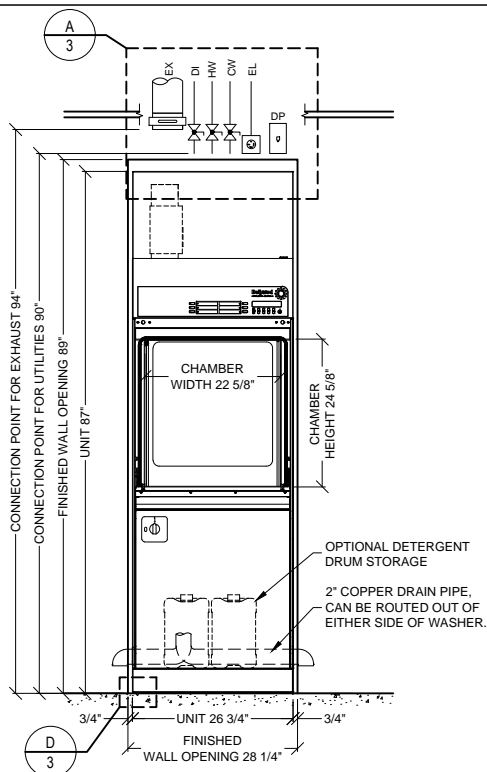


SERVICE SHUT-OFF VALVE, BY OTHERS

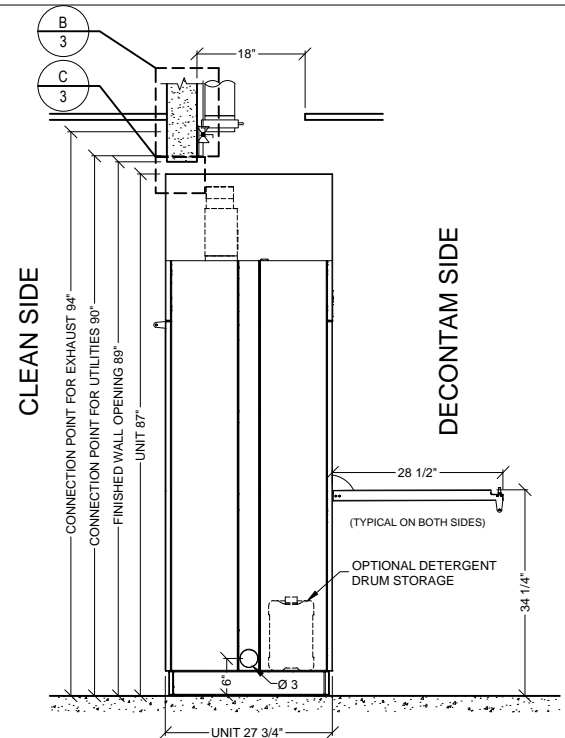


MANUAL EXHAUST DAMPER, BY OTHERS

## PLAN VIEW



## DECONTAM ELEVATION



## SIDE ELEVATION

**BeliMed**

Infection Control

2284 Clements Ferry Road, Charleston, SC 29492  
Tel: (800) 457-4117 Web: www.belimed.us

## BELIMED WD200ED

ELECTRIC MODEL WASHER/DISINFECTOR W/ DI PRE-HEATER

### TECHNICAL DRAWING

Typical installation of a Belimed WD200ED Washer/Disinfector.

Dwg. No. : CUT-WD200ED

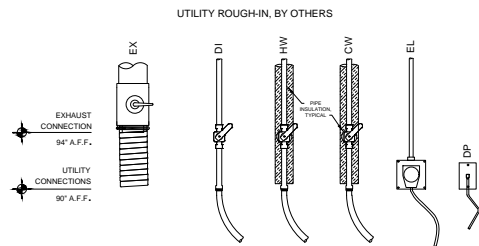
Rev. : E

Drawn By : A. HERRON

Date : 7/6/16

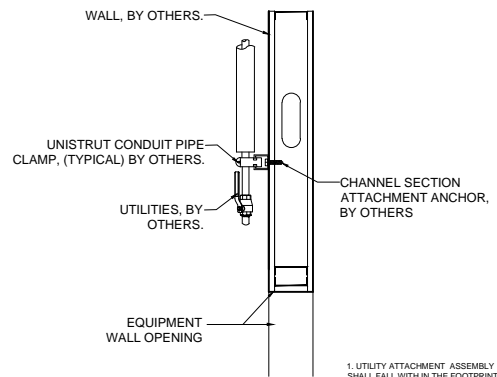
Scale : 3/8" = 1'

Page : 2 of 4



EX - EXHAUST  
HW - HOT WATER  
CW - COLD WATER  
DI - DEIONIZED WATER  
EL - ELECTRICAL (WASHER)  
DP - DATA PORT

1. REFER TO EQUIPMENT PLUMBING, MECHANICAL AND ELECTRICAL PLANS FOR UTILITY LOCATIONS.  
2. SEE TECHNICAL SPECIFICATIONS FOR UTILITY SIZING, INPUT REQUIREMENTS AND FINAL CONNECTIONS.

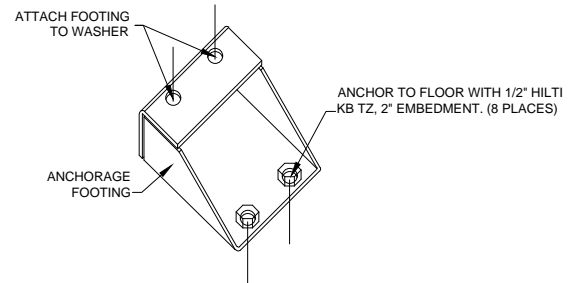
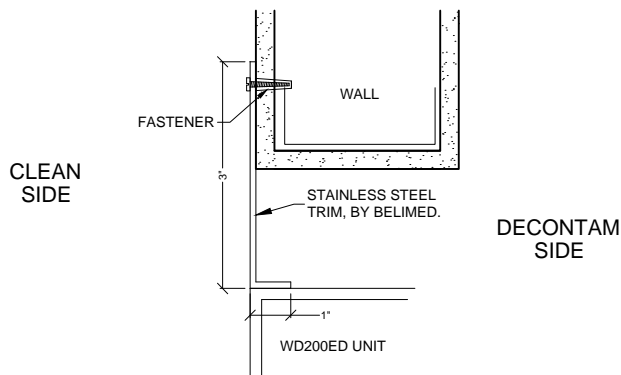


NOTE: REFER TO LOCAL BUILDING CODES AND/OR SEISMIC ANCHORAGE REQUIREMENTS FOR FINAL ATTACHMENT METHOD.

1. UTILITY ATTACHMENT ASSEMBLY SHALL FALL WITHIN THE FOOTPRINT OF THE SPECIFIED EQUIPMENT.  
2. REFER TO EQUIPMENT PLUMBING, MECHANICAL AND ELECTRICAL PLANS FOR UTILITY LOCATIONS.  
3. SEE TECHNICAL SPECIFICATIONS FOR UTILITY SIZING, INPUT REQUIREMENTS, AND FINAL CONNECTIONS.

**A** TYPICAL UTILITY LAYOUT  
WD200ED WASHER - (ELECTRIC)  
N.T.S.

**B** RECOMMENDED TYPICAL WALL HUNG  
UTILITY ATTACHMENT DETAIL (SIDE VIEW)  
N.T.S.



DETAIL FOR REGIONS REQUIRING SEISMIC ANCHORAGE.

**C** TYP. TRIM ATTACHMENT DETAIL  
WD200ED WASHER  
N.T.S.

**D** TYP. SEISMIC ANCHORING DETAIL  
WD200 WASHER  
N.T.S.

# WD200ED WASHER/DISINFECTOR - TECHNICAL SPECIFICATIONS

## REQUIRED INPUTS

Symbol	Description	Value	Utility Notes	Connection Method	Final Utility Conn. By:	
					Others	Belimed
HW	Utility:	Hot Water	Recommended hot water total CaCO <sub>3</sub> less than 200 ppm. Minimum temperature of 120°F. (Colder HW temperature will result in longer cycles and higher energy consumption.)	Flex		X
	Connection Size/Type:	3/4 inch MNPT				
	Pressure:	Min: 30 Max: 90 psig				
	Peak Consumption:	10.6 gal/min				
CW	*Consumption per Load:	12.8 gal	Recommended cold water total CaCO <sub>3</sub> less than 200 ppm. Maximum temperature of cold water is 35°C (95°F).	Flex		X
	Utility:	Cold Water				
	Connection Size/Type:	3/4 inch MNPT				
	Pressure:	Min: 30 Max: 90 psig				
DI	Peak Consumption:	10.6 gal/min	Deionized (DI) or Reverse Osmosis (RO) water can be used with a conductivity <15 µS/cm. (Slower flow rate results in longer cycle times.)	Flex		X
	*Consumption per Load:	6.4 gal				
	Utility:	Deionized Water				
	Connection Size/Type:	3/4 inch MNPT				
EL	Pressure:	Min: 30 Max: 90 psig	Peak amperage consumption occurs during thermal disinfection stage.	Receptacle		X
	Operating Consumption:	Min: 2 Max: 10.6 gal/min				
	*Consumption per Load:	6.4 gal				
	Utility:	Electric				
DP	Connection Type:	NEMA 15-50R Receptacle	Receptacle: Grainger Part Number - 5Z891			X
	Voltage (Phase):	3 Phase				
	Voltage (Nominal):	208 V				
	Voltage (Frequency):	60 Hz				
DP	Circuit Protection:	50 Amps	Location: Preferred Ethernet port location is in the enclosed service area of the washer/disinfector or within 5 ft of machine			X
	Peak Consumption:	43 Amps				
	*Consumption per Load:	3.9 kW-h				
	Utility:	Data Port (Optional)				
DP	Connection Type:	RJ45 Receptacle	Location: Preferred Ethernet port location is in the enclosed service area of the washer/disinfector or within 5 ft of machine			X
	Connection Quantity:	One (1) RJ45 Ethernet port per machine				
	Facility Wiring:	Cat-5 or better				
	Final Connection:	Patch cables for final connection provided				
DP	Port IP Setup:	Each RJ45 requires static IP address				

## ESTIMATED EMISSIONS

DR	Utility:	Open Drain	Provide flush mounted floor sink and trap.	2" copper pipe	X	
	Connection Size:	2 inch				
	Discharge Flow Rate:	40 gal/min				
	Connection Type:	Indirect Drain				
EX	Medium:	Air Exhaust	Discharged air is at 100% humidity, others must provide proper drainage upstream as needed. Others to provide manual style manual damper at each exhaust connection point.	Flex		X
	Connection Size:	5 inch OD				
	Peak Flow Rate:	130 cfm ± 10%				
	Minimum Duct Diameter:	5 inch				
	Duct Materials (in order of recommended use):	stainless steel, galvanized steel, polyethylene, or aluminum	Free Standing Machine. Variation due to program variability in Ao value, dry time, and dry temperatures.			
	Medium:	Heat Radiation				
	Radiation (Net):	500 W				
	Radiation (Tolerance):	+/- 200 W				
	Medium:	Noise Radiation	Temporary maximum of 73 dBA during drying phase.			
	Maximum Radiation (Net):	61 dBA				

## PHYSICAL SPECIFICATIONS

	Parameter:	Carry-In Dimensions	Machine alone (i.e. removed from packaging)
	Height:	87.0 in	
	Width:	26.7 in	
	Length:	27.9 in	
	Parameter:	Weights	Transport Weight = (Machine + Crating) Operating Weight = (Machine + Water)
	Transport Weight:	700 lbs	
	Operating Weight:	785 lbs	
	Parameter:	OSHDP	
	OSHDP NUMBER:	OPM-0250-13	

\* Values are for an "General Instrument Cycle". Values will vary with rack size, load size, utility inputs, detergents and cycle setup.

### Additional Information:

MNPT = Male Pipe Thread

Maximum finished floor level tolerance is 1/4" for washer.

All utility supplies and connections are to be provided by others, per local code.

TS-WD200ED-Rev\_E



2284 Clements Ferry Road, Charleston, SC 29492  
Tel: (800) 457-4117 Web: www.belimed.us

## BELIMED WD200ED

ELECTRIC MODEL WASHER/DISINFECTOR W/ DI PRE-HEATER

### TECHNICAL SPECIFICATIONS

Typical installation of a Belimed WD200ED Washer/Disinfector.

Dwg. No.: CUT-WD200ED Rev.: E

Drawn By: A. HERRON Date: 7/6/16

Scale: NTS Page: 4 of 4