

BeliMed

Infection Control

2325 Charleston Regional Parkway, Charleston, SC 29492
Tel: (800) 457-4117 Web: www.belimed.com

BELIMED WD290 WASHER/DISINFECTOR

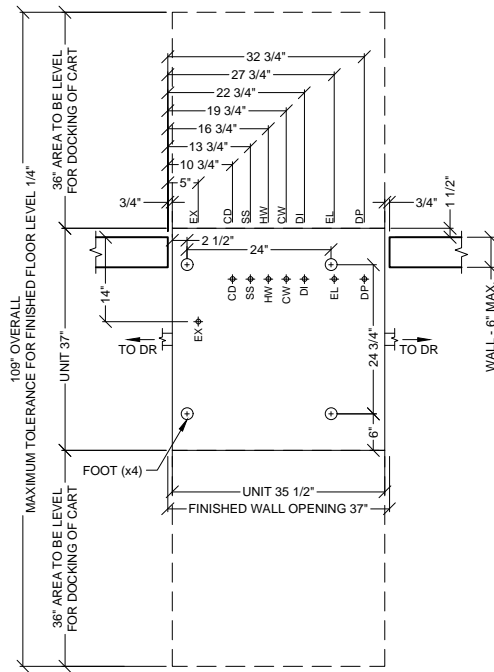
Typical installation of a Belimed WD290
Washer/Disinfector.

Dwg. No. : CUT-WD290-09 Rev. : J

Drawn By : A. HERRON Date : 7/6/16

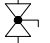


Scale : 3/4" = 1' Page : 1 of 5

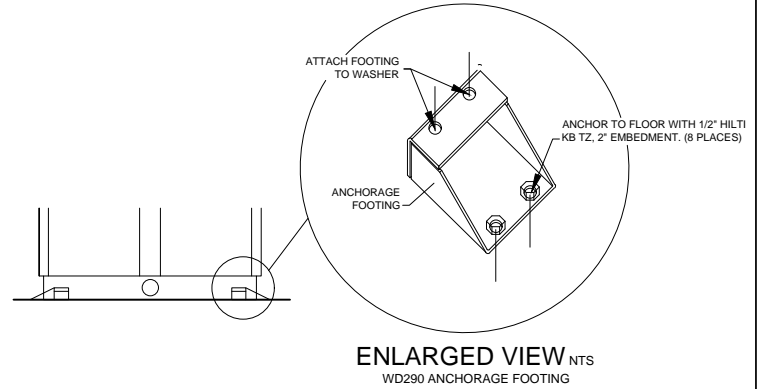
CLEAN SIDE



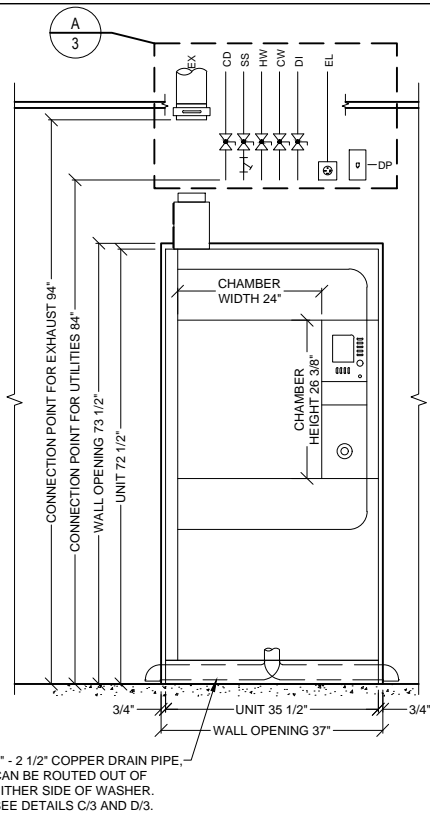
DECONTAM SIDE

LEGEND

-  — SERVICE SHUT-OFF VALVE, BY OTHERS
-  — STEAM PARTICLE STRAINER, BY OTHERS
-  — MANUAL EXHAUST DAMPER, BY OTHERS

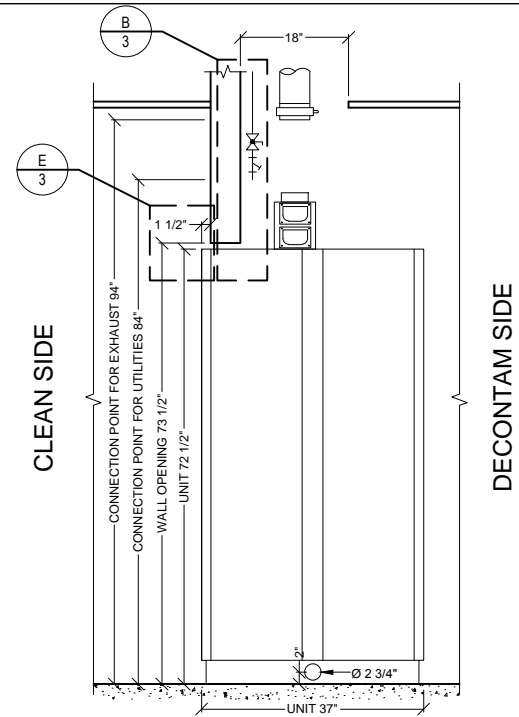


PLAN VIEW



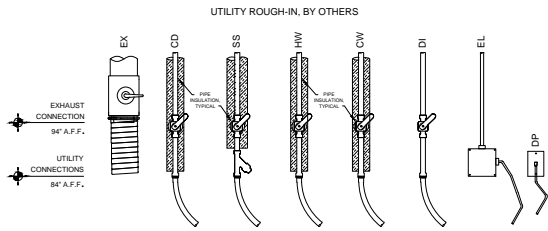
2" - 2 1/2" COPPER DRAIN PIPE,
CAN BE ROUTED OUT OF
EITHER SIDE OF WASHER.
SEE DETAILS C/3 AND D/3.

TYPICAL SEISMIC ANCHORAGE



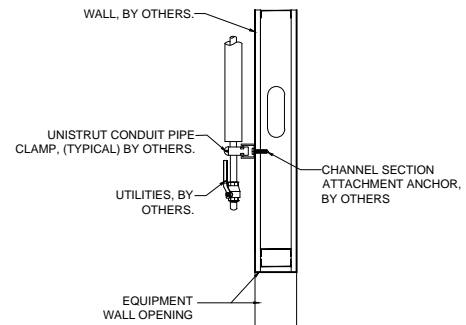
DECONTAM ELEVATION

SIDE ELEVATION



EX - EXHAUST
CD - CONDENSATE RETURN
SS - STEAM
HW - HOT WATER
CW - COLD WATER
DI - DEIONIZED WATER
EL - ELECTRICAL (WASHER)
DP - DATA PORT

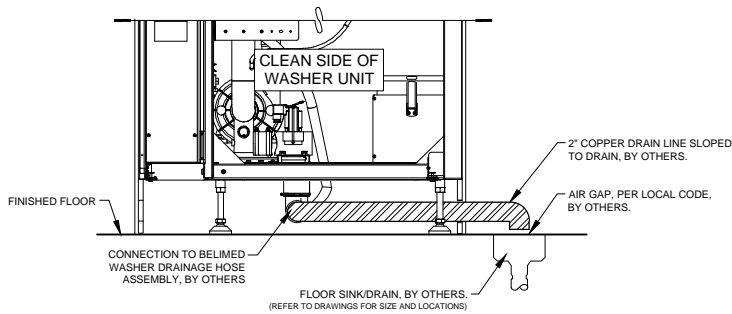
1. REFER TO EQUIPMENT PLUMBING, MECHANICAL AND ELECTRICAL PLANS FOR UTILITY LOCATIONS.
2. SEE TECHNICAL SPECIFICATIONS FOR UTILITY SIZING, INPUT REQUIREMENTS AND FINAL CONNECTIONS.



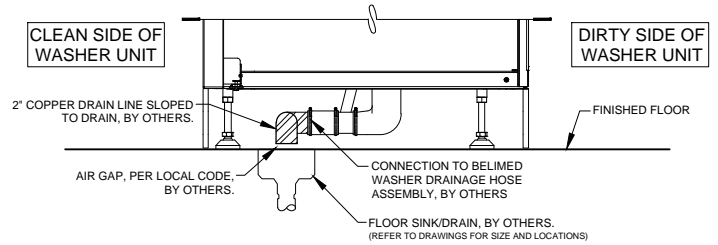
NOTE: REFER TO LOCAL BUILDING CODES AND/OR SEISMIC ANCHORAGE REQUIREMENTS FOR FINAL ATTACHMENT METHOD.

1. UTILITY ATTACHMENT ASSEMBLY SHALL FALL WITHIN THE FOOTPRINT OF THE SPECIFIED EQUIPMENT.
2. REFER TO EQUIPMENT PLUMBING, MECHANICAL, AND ELECTRICAL PLANS FOR UTILITY LOCATIONS.
3. SEE TECHNICAL SPECIFICATIONS FOR UTILITY SIZING, INPUT REQUIREMENTS, AND FINAL CONNECTIONS.

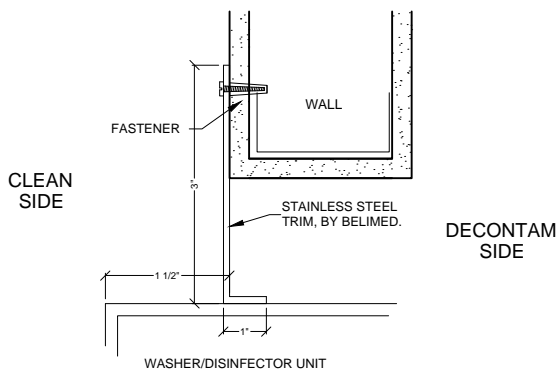
A TYPICAL UTILITY LAYOUT WASHER/DISINFECTOR (STEAM)
N.T.S.



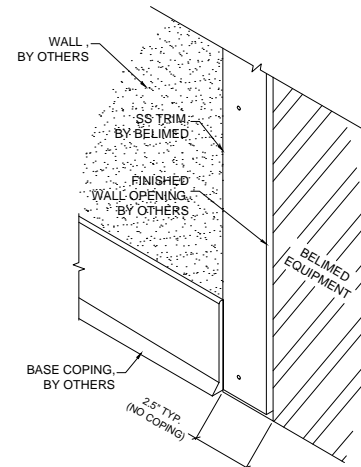
B RECOMMENDED TYPICAL WALL HUNG UTILITY ATTACHMENT DETAIL (SIDE VIEW)
N.T.S.



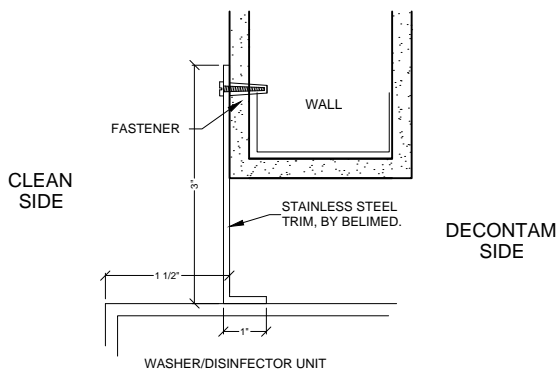
C TYP. DRAIN CONNECTION DETAIL WASHER/DISINFECTOR (CLEAN SIDE VIEW)
N.T.S.



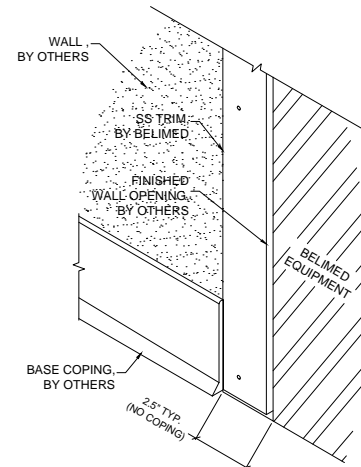
D TYP. DRAIN CONNECTION DETAIL WASHER/DISINFECTOR (SIDE VIEW)
N.T.S.



E TYP. TRIM ATTACHMENT DETAIL WASHER/DISINFECTOR
N.T.S.



F TYP. BASE COPING AT WALL OPENING
N.T.S.



WD290 WASHER/DISINFECTOR - TECHNICAL SPECIFICATIONS

REQUIRED INPUTS

Symbol	Description	Value	Utility Notes	Connection Method	Final Utility Conn. By:	
					Others	Belimed
SS	Utility:	Steam Supply	Steam must be dry, saturated, and free from all impurities such as gases, oil, dirt, or other contaminants. Provide steam strainer with #100 mesh size. All steam drops must be piped from top of steam supply line.	Flex		X
	Connection Size/Type:	3/4 inch MNPT				
	Pressure:	Min: 30 Max: 70 psig				
	Peak Consumption:	4.2 lbs/min				
HW	*Consumption per Load:	Min: 15 Max: 22 lbs	Minimum temperature of 120°F. (Colder temperature will result in longer cycles and higher steam consumption.) Water must have a TDS measurement of less than 200 ppm.	Flex		X
	Utility:	Hot Water				
	Connection Size/Type:	3/4 inch MNPT				
	Pressure:	Min: 30 Max: 70 psig				
CW	Peak Consumption:	10.6 gal/min	Water must have a TDS measurement of less than 200 ppm.	Flex		X
	*Consumption per Load:	Min: 16 Max: 18.2 gal				
	Utility:	Cold Water				
	Connection Size/Type:	3/4 inch MNPT				
DI	Pressure:	Min: 30 Max: 70 psig	Deionized (DI) or Reverse Osmosis (RO) used with a conductivity of less than 30 µS/cm. Slower flow rates will result in longer cycle times.	Flex		X
	Operating Consumption:	Min: 2.0 Max: 10.6 gal/min				
	*Consumption per Load:	Min: 8.0 Max: 9.1 gal				
	Utility:	Deionized Water				
EL	Connection Type:	Hard wire within junction box	Peak consumption occurs during drying portion of cycle. Service disconnect provided by others per local code.	Hard Pipe	X	
	Voltage (Phase):	3 Phase				
	Voltage (Nominal):	208 VAC				
	Voltage (Frequency):	60 Hz				
	Circuit Protection:	40 Amps				
	Peak Consumption:	26.7 Amps				
	*Consumption per Load:	Min: 2.8 Max: 3.0 kW-h				
DP	Utility:	Data Port	Location: Preferred Ethernet port location is in the enclosed service area of the washer/disinfector or within 5 ft of machine			X
	Connection Type:	RJ45 Receptacle				
	Connection Quantity:	One (1) RJ45 Ethernet port per machine				
	Facility Wiring:	Cat-5 or better				
	Final Connection:	Patch cables for final connection provided				
	Port IP Setup:	Each RJ45 requires static IP address				

ESTIMATED EMISSIONS

CD	Utility:	Condensate	Condensate removal by customer, per local code.	Flex		X
	Connection Size/Type:	3/4 inch MNPT				
DR	Utility:	Open Drain	Provide flush mounted floor sink and trap.	2" copper pipe	X	
	Connection Size:	2.0 inch				
	Discharge Flow Rate:	30.0 gal/min				
EX	Connection Type:	Indirect Drain	Discharged air is at 100% humidity, others must provide proper drainage upstream as needed. Others to provide manual style manual damper at each exhaust connection point.	Flex		X
	Medium:	Air Exhaust				
	Connection Size:	5 inch OD				
	Peak Flow Rate:	250 cfm ± 10%				
	Minimum Duct Diameter:	5 inch				
	Duct Materials (in order of recommended use):	stainless steel, galvanized steel, polyethylene, or aluminum	Free Standing Machine. Variation due to program variability in Ao value, dry time, and dry temperatures.			
	Medium:	Heat Radiation				
	Radiation (Net):	1000 W				
	Radiation (Tolerance):	+/- 200 W				
	Medium:	Noise Radiation				
	Maximum Radiation (Net):	62 dBA				

CONTINUED ON PAGE 5

PHYSICAL SPECIFICATIONS

	Parameter:	Carry-In Dimensions	
	Height:	72.5 in	Machine alone (i.e. removed from packaging)
	Width:	35.5 in	
	Length:	37.0 in	
	Parameter:	Weights	
	Transport Weight:	900 lbs	Transport Weight = (Machine + Crating)
	Operating Weight:	860 lbs	Operating Weight = (Machine + Water)
	OSHPD NUMBER:	OPM-0130-13	
<p>*Values are for an "Instruments - General Instrument Cycle" with 888 detergent. Minimum consumption values are measured with an empty rack. Maximum consumption values are measured with a fully loaded rack. Values will vary with rack size, load size, utility inputs, detergents, and cycle setup.</p> <p><u>Additional Information:</u> For automated systems, additional utilities may be required. Consult site drawings for specific details. MNPT = Male Pipe Thread Maximum tolerance for finished floor level tolerance is 1/4" for washer and conveyor area. All utility supplies and connections are to be provided by others, per local code.</p>			

TS-WD290-09_RevK