

BeliMed

Infection Control

2325 Charleston Regional Parkway, Charleston, SC 29492
Tel: (800) 457-4117 Web: www.belimed.com

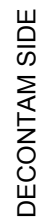
BELIMED WD290E WASHER/DISINFECTOR

Typical installation of a Belimed WD290E
Washer/Disinfector.

Dwg. No. :	CUT-WD290-09E	Rev. : K
Drawn By :	A. IACOMINO	Date : 8/7/17
Scale :	3/4" = 1'	Page : 1 of 4



- CLEAN SIDE

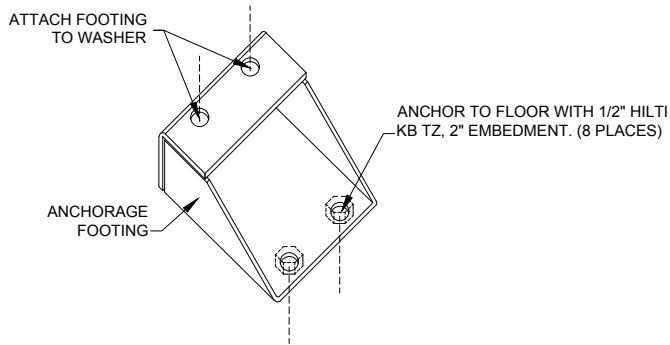


- ## SIDE ELEVATION

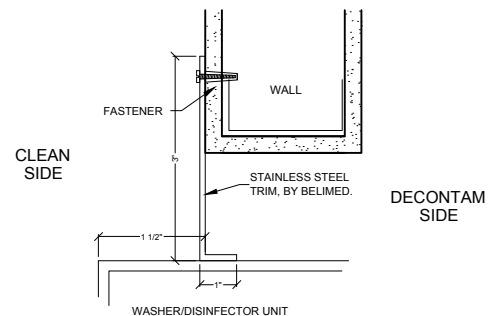
BELIMED WD290E

WASHER/DISINFECTOR

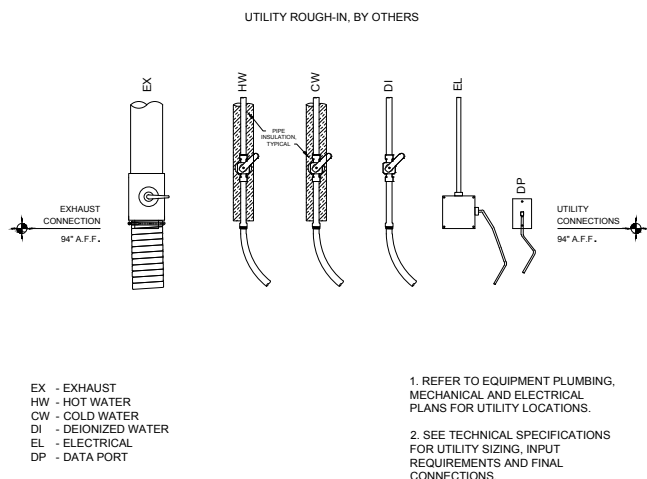
Dwg. No. :	CUT-WD290-09E	Rev. :	K
Drawn By :	A. IACOMINO	Date :	8/7/17
Scale :	3/8" = 1'	Page :	2 of 4



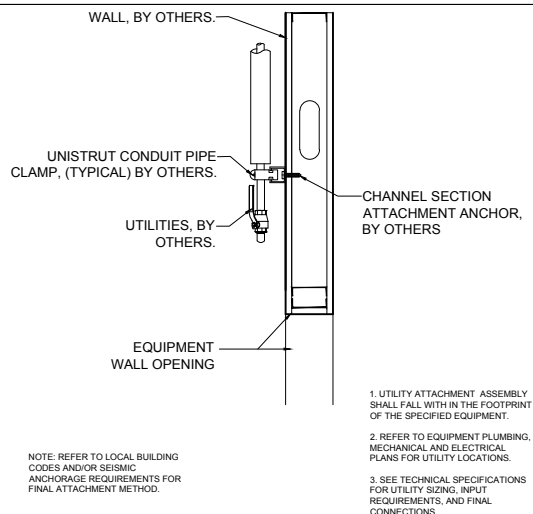
A TYP. SEISMIC ANCHORING DETAIL
WASHER/DISINFECTOR
N.T.S.



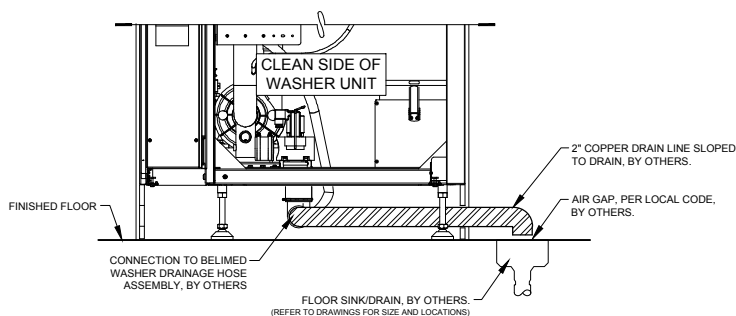
B TYP. TRIM ATTACHMENT DETAIL
WASHER/DISINFECTOR
N.T.S.



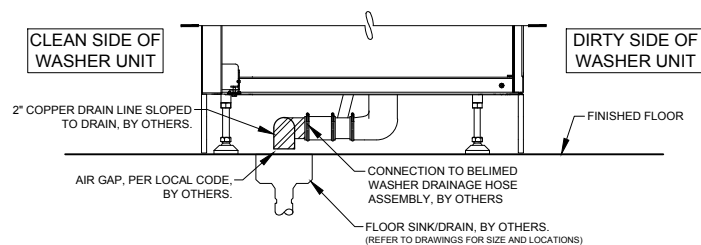
C TYPICAL UTILITY LAYOUT
WASHER/DISINFECTOR - (ELECTRIC)
N.T.S.



D RECOMMENDED TYPICAL WALL HUNG
UTILITY ATTACHMENT DETAIL (SIDE VIEW)
N.T.S.



E TYPICAL DRAIN DETAIL
WASHER/DISINFECTOR
N.T.S.



F TYPICAL DRAIN DETAIL
WASHER/DISINFECTOR (SIDE VIEW)
N.T.S.

WD290E WASHER/DISINFECTOR - TECHNICAL SPECIFICATIONS

REQUIRED INPUTS

Symbol	Description	Value	Utility Notes	Connection Method	Final Utility Conn. By:	
					Others	Belimed
HW	Utility:	Hot Water	Minimum temperature of 120°F. (Colder temperature will result in longer cycles and higher steam consumption.) Water must have a TDS measurement of less than 200 ppm.	Flex		X
	Connection Size/Type:	3/4 inch MNPT				
	Pressure:	Min: 30 Max: 70 psig				
	Peak Consumption:	10.6 gal/min				
CW	*Consumption per Load:	Min: 16 Max: 18.2 gal	Water must have a TDS measurement of less than 200 ppm.	Flex		X
	Utility:	Cold Water				
	Connection Size/Type:	3/4 inch MNPT				
	Pressure:	Min: 30 Max: 70 psig				
DI	Peak Consumption:	10.6 gal/min	Deionized (DI) or Reverse Osmosis (RO) used with a conductivity of less than 30 µS/cm. Slower flow rates will result in longer cycle times.	Flex		X
	*Consumption per Load:	Min: 8.0 Max: 9.1 gal				
	Utility:	Deionized Water				
	Connection Size/Type:	3/4 inch MNPT				
EL	Pressure:	Min: 30 Max: 70 psig	Peak consumption occurs during the heating of water when the pump is active. Service disconnect provided by others per local code.	Hard Wired	X	
	Operating Consumption:	Min: 2.0 Max: 10.6 gal/min				
	*Consumption per Load:	Min: 8.0 Max: 9.1 gal				
	Utility:	Electric				
DP	Connection Type:	Hard wire within junction box	Location: Preferred Ethernet port location is in the enclosed service area of the washer/disinfector or within 5 ft of machine			X
	Connection Quantity:	RJ45 Receptacle				
	Facility Wiring:	One (1) RJ45 Ethernet port per machine				
	Final Connection:	Cat-5 or better				
	Port IP Setup:	Patch cables for final connection provided				
		Each RJ45 requires static IP address				

ESTIMATED EMISSIONS

DR	Utility:	Open Drain	Provide flush mounted floor sink and trap.	2" copper pipe	X	
	Connection Size:	2.0 inch				
	Discharge Flow Rate:	30.0 gal/min				
	Connection Type:	Indirect Drain				
EX	Medium:	Air Exhaust	Discharged air is at 100% humidity, others must provide proper drainage upstream as needed. Others to provide manual style manual damper at each exhaust connection point.	Flex		X
	Connection Size:	5 inch OD				
	Peak Flow Rate:	250 cfm ± 10%				
	Minimum Duct Diameter:	5 inch				
	Duct Materials (in order of recommended use):	stainless steel, galvanized steel, polyethylene, or aluminum	Free Standing Machine. Variation due to program variability in Ao value, dry time, and dry temperatures.			
	Medium:	Heat Radiation				
	Radiation (Net):	1000 W				
	Radiation (Tolerance):	+/- 200 W				
	Medium:	Noise Radiation				
	Maximum Radiation (Net):	62 dBA				

PHYSICAL SPECIFICATIONS

	Parameter:	Carry-In Dimensions	Machine alone (i.e. removed from packaging)
	Height:	72.5 in	
	Width:	35.5 in	
	Length:	37.0 in	
	Parameter:	Weights	Transport Weight = (Machine + Crating) Operating Weight = (Machine + Water)
	Transport Weight:	1150 lbs	
	Operating Weight:	1100 lbs	
OSHPD NUMBER:		OPM-0130-13	

*Values are for an "Instruments - General Instrument Cycle" with 888 detergent. Minimum consumption values are measured with an empty rack. Maximum consumption values are measured with a fully loaded rack. Values will vary with rack size, load size, utility inputs, detergents, and cycle setup.

Additional Information:

For automated systems, additional utilities may be required. Consult site drawings for specific details.
MNPT = Male Pipe Thread
Maximum tolerance for finished floor level tolerance is 1/4" for washer and conveyor area.
All utility supplies and connections are to be provided by others, per local code.

TS-WD290-09E_RevM



Infection Control

2325 Charleston Regional Parkway, Charleston, SC 29492
Tel: (800) 457-4117 Web: www.belimed.com

BELIMED WD290E WASHER/DISINFECTOR

TECHNICAL SPECIFICATIONS Typical installation of a Belimed WD290E Washer/Disinfector.	Dwg. No. :	CUT-WD290-09E	Rev. : K
	Drawn By :	A. IACOMINO	Date : 8/7/17
	Scale :	NONE	Page : 4 of 4