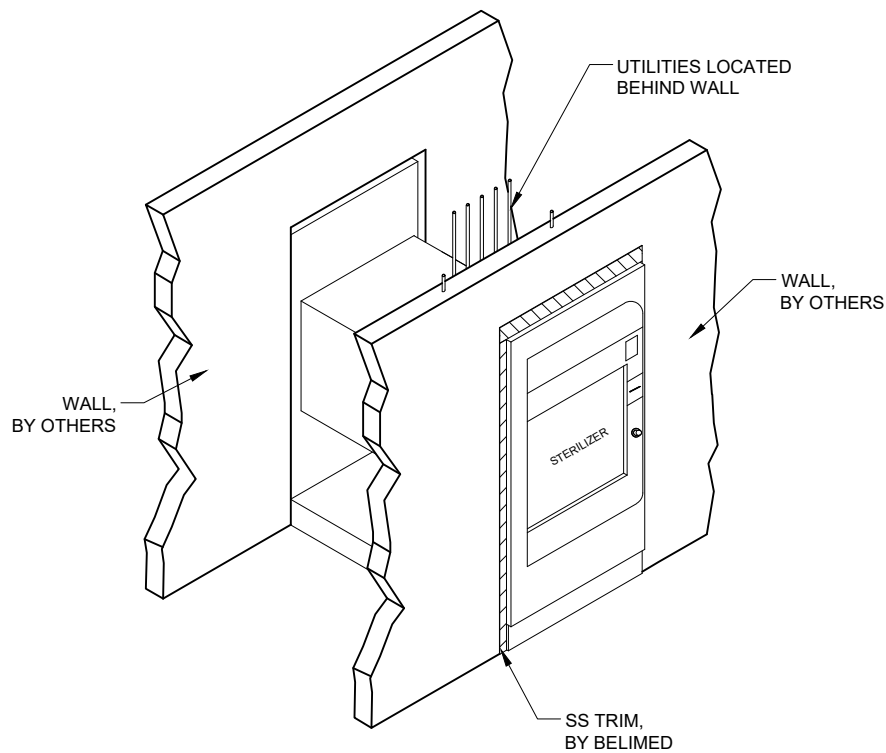
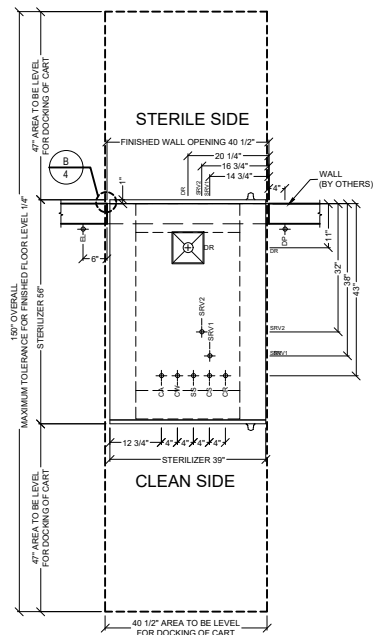


INSET UNIT

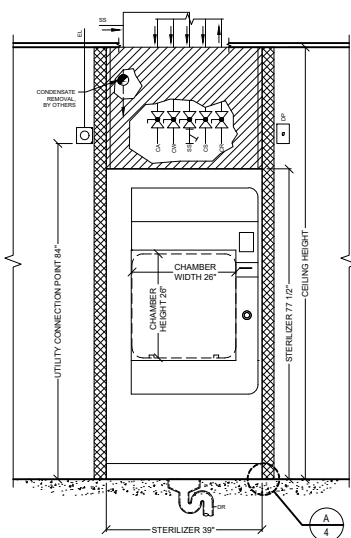


RECESSED UNIT



### PLAN VIEW




SEE DETAIL D/4 FOR TYPICAL  
OPTIONAL CHILLED WATER  
BYPASS.



SEE DETAIL C/4 FOR TYPICAL  
UTILITY LAYOUT.

### CLEAN SIDE ELEVATION

## LEGEND

 — SERVICE SHUT-OFF VALVE, BY OTHERS  
 — STEAM PARTICLE STRAINER, BY OTHERS  
 — STEAM TRAP, BY OTHERS

## LINE TYPES

----- FLOOR LEVEL OUTLINE

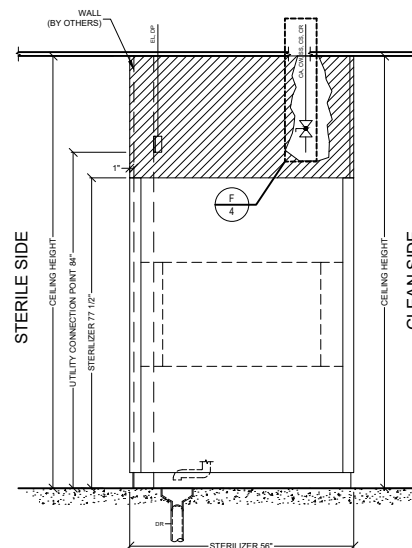
## HATCH TYPES

 STAINLESS STEEL ENCLOSURES, BY BELIMED

 STAINLESS STEEL TRIM. BY BELIMED

## GENERAL NOTES

1. SEE SHEETS 5 & 6 FOR TECHNICAL SPECIFICATIONS.  
2. SEE TYPICAL INSTALLATION DETAILS ON SHEET 4.



### SIDE ELEVATION

# Belimed

Infection Control

1535 Hobby Street, Charleston, SC 29405  
Tel: (800) 457-4117 Web: [www.belimed.com](http://www.belimed.com)

# BELIMED MST-V 609-VS2

## DOUBLE DOOR STEAM STERILIZER

## TECHNICAL DRAWING

Typical installation of an inset Belimed MST-V 609-VS2 Sterilizer.

Dwg. No. :	CUT-609-VS2
------------	-------------

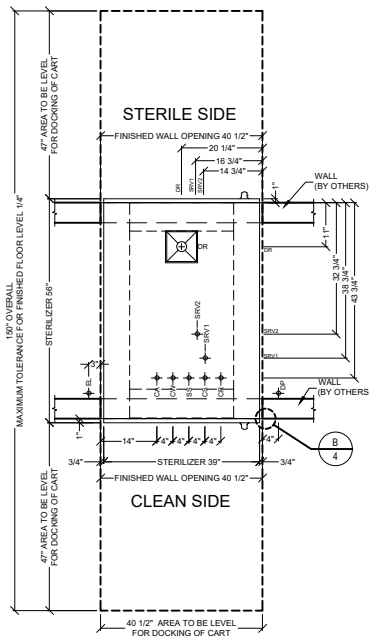
Rev. :	F
--------	---

Drawn By :	A. JONES
------------	----------

Date :	05/11/18
--------	----------

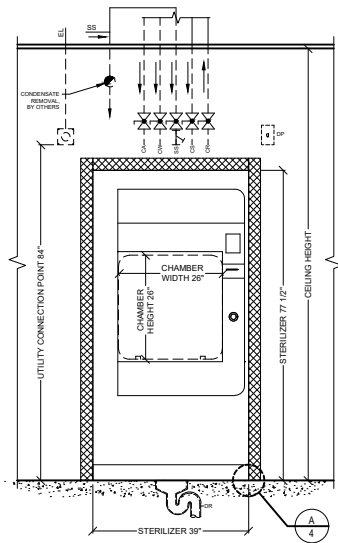
Scale :  $1/4" = 1'$

Page : 2 of 6



PLAN VIEW

SEE DETAIL D/4 FOR TYPICAL OPTIONAL CHILLED WATER BYPASS.



SEE DETAIL C/4 FOR TYPICAL UTILITY LAYOUT.

CLEAN SIDE ELEVATION

## LEGEND

- SERVICE SHUT-OFF VALVE, BY OTHERS
- STEAM PARTICLE STRAINER, BY OTHERS
- STEAM TRAP, BY OTHERS

### LINE TYPES

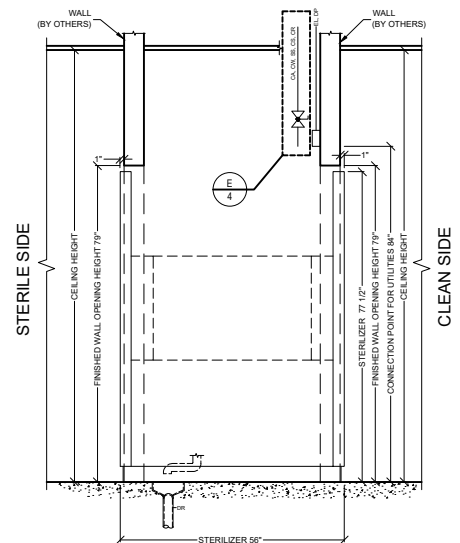
----- FLOOR LEVEL OUTLINE

### HATCH TYPES

STAINLESS STEEL TRIM, BY BELIMED

## GENERAL NOTES

1. SEE SHEETS 5 & 6 FOR TECHNICAL SPECIFICATIONS.
2. SEE TYPICAL INSTALLATION DETAILS ON SHEET 4.



SIDE ELEVATION

**Belimed**  
Infection Control

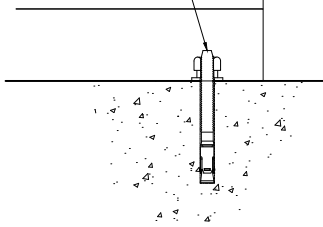
1535 Hobby Street, Charleston, SC 29405  
Tel: (800) 457-4117 Web: www.belimed.com

## BELIMED MST-V 609-VS2 DOUBLE DOOR STEAM STERILIZER

TECHNICAL DRAWING  
Typical installation of a recessed Belimed  
MST-V 609-VS2 Sterilizer.

Dwg. No. :	CUT-609-VS2	Rev. : F
Drawn By :	A. JONES	Date : 05/11/18
Scale :	1/4" = 1'	Page : 3 of 6

5/8" DIA. HILTI KB-TZ EXPANSION  
ANCHORS (MIN. EMBED. = 4").  
(x4 LOCATIONS).

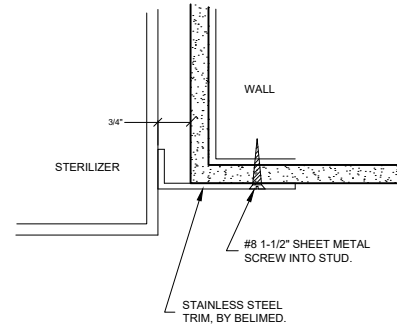


DETAIL FOR FOR REGIONS  
REQUIRING SEISMIC ANCHORAGE.

**TYP. SEISMIC ANCHORING DETAIL  
VERTICAL SERIES STERILIZER**

A

N.T.S.



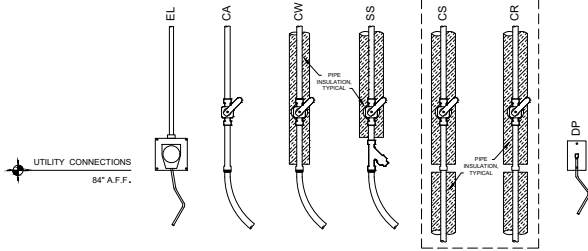
**TYP. TRIM ATTACHMENT DETAIL  
VERTICAL STERILIZER**

B

N.T.S.

UTILITY ROUGH-IN, BY OTHERS

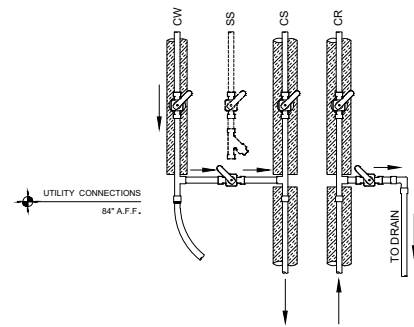
OPTIONAL CHILLED  
WATER CONNECTIONS



MANUAL SERVICE VALVES, BY OTHERS.

EL - ELECTRICAL  
CA - COMPRESSED AIR  
CW - COLD WATER  
SS - STEAM  
CS - CHILLED WATER SUPPLY (OPTIONAL)  
CR - CHILLED WATER RETURN (OPTIONAL)

1. REFER TO EQUIPMENT PLUMBING,  
MECHANICAL AND ELECTRICAL  
PLANS FOR UTILITY LOCATIONS.  
2. SEE TECHNICAL SPECIFICATIONS  
FOR UTILITY SIZING, INPUT  
REQUIREMENTS, AND FINAL  
CONNECTIONS.



MANUAL SERVICE VALVES, BY OTHERS.

CW - COLD WATER  
CS - CHILLED WATER SUPPLY  
CR - CHILLED WATER RETURN

**TYPICAL UTILITY LAYOUT  
VERTICAL STERILIZER - (STEAM)**

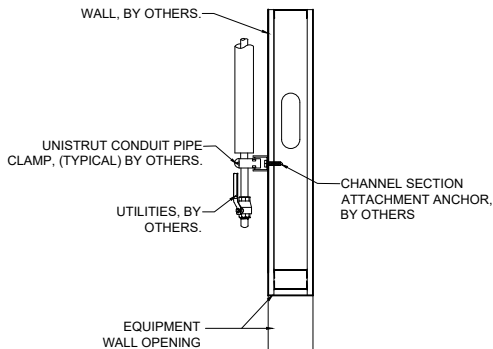
C

N.T.S.

**TYP. (OPTIONAL) BY PASS DETAIL  
CHILLED WATER CONNECTION**

D

N.T.S.



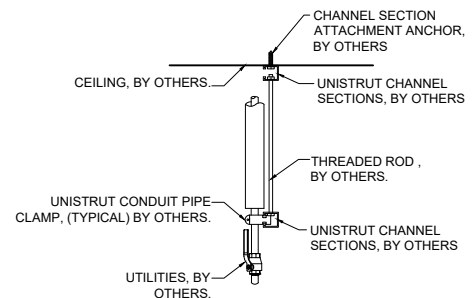
NOTE: REFER TO LOCAL BUILDING  
CODES AND/OR SEISMIC  
ANCHORAGE REQUIREMENTS FOR  
FINAL ATTACHMENT METHOD.

1. UTILITY ATTACHMENT ASSEMBLY  
SHALL FALL WITH IN THE FOOTPRINT  
OF THE SPECIFIED EQUIPMENT.  
2. REFER TO EQUIPMENT PLUMBING,  
MECHANICAL AND ELECTRICAL  
PLANS FOR UTILITY LOCATIONS.  
3. SEE TECHNICAL SPECIFICATIONS  
FOR UTILITY SIZING, INPUT  
REQUIREMENTS, AND FINAL  
CONNECTIONS.

**RECOMMENDED TYPICAL WALL HUNG  
UTILITY ATTACHMENT DETAIL (SIDE VIEW)**

E

N.T.S.



NOTE: REFER TO LOCAL BUILDING  
CODES AND/OR SEISMIC  
ANCHORAGE REQUIREMENTS FOR  
FINAL ATTACHMENT METHOD.

1. UTILITY ATTACHMENT ASSEMBLY  
SHALL FALL WITH IN THE FOOTPRINT  
OF THE SPECIFIED EQUIPMENT.  
2. REFER TO EQUIPMENT PLUMBING,  
MECHANICAL AND ELECTRICAL  
PLANS FOR UTILITY LOCATIONS.  
3. SEE TECHNICAL SPECIFICATIONS  
FOR UTILITY SIZING, INPUT  
REQUIREMENTS, AND FINAL  
CONNECTIONS.

**RECOMMENDED TYPICAL CEILING HUNG  
UTILITY ATTACHMENT DETAIL (SIDE VIEW)**

F

N.T.S.

**Belimed**  
Infection Control  
1535 Hobby Street, Charleston, SC 29405  
Tel: (800) 457-4117 Web: www.belimed.com

**BELIMED MST-V 609-VS2**  
DOUBLE DOOR STEAM STERILIZER

TYPICAL DETAILS  
Typical installation details for a Belimed  
MST-V 609-VS2 Sterilizer.

Dwg. No. : CUT-609-VS2 Rev. : F  
Drawn By : A. JONES Date : 05/11/18  
Scale : N.T.S. Page : 4 of 6

# MST-V 609VS2 STERILIZER - TECHNICAL SPECIFICATIONS

## REQUIRED INPUTS

Symbol	Description	Value	Utility Notes	Connection Method	Final Utility Conn. By:	
					Others	Belimed
SS	Utility:	Steam	Steam must be dry, saturated, and free from all impurities such as gases, oil, dirt, or other contaminants. Provide adequate steam strainer typical for sterilizers. All steam drops must be piped from top of steam supply line.	Flex		X
	Connection Size/Type:	3/4 inch / MNPT				
	Pressure:	Min: 40 Max: 65 psig				
	Peak Consumption:	2.2 lbs/min				
	*Consumption per Load:	33 lbs				
	Consumption while Idle:	0.07 lbs/min				
CW	Utility:	Cold Water	Cold water is used to prime the condensate pump and cool the condensate. Optimal temperature is 60°F (incoming water temp must be 70°F or less). TDS to be < 400 ppm. Water should be softened to 0-60 ppm. Back flow prevention must be supplied by customer, as per local code.	Flex		X
	Connection Size/Type:	1/2 inch / MNPT				
	Pressure:	Min: 30 Max: 70 psig				
	Peak Consumption:	4 gal/min				
	*Consumption per Load:	55 gal				
CA	Utility:	Compressed Air	Air must be dry and oil free. Used to operate pneumatic control system.	Flex		X
	Connection Size/Type:	1/4 inch / MNPT				
	Pressure:	Min: 70 Max: 100 psig				
	Peak Consumption:	1 CFM				
	*Consumption per Load:	10 CF				
EL	Utility:	Electric	Junction Box with Receptacle. NEMA 15-20R to NEC local codes. Grainger part No. 5C793.	Receptacle		X
	Connection Type:	Receptacle				
	Voltage (Nominal):	208 VAC				
	Voltage (Phase):	3 Phase				
	Voltage (Frequency):	60 Hz				
	Circuit Protection:	10 Amps				
	Peak Consumption:	2.3 kW				
*Consumption per Load:	1 kWh					
DP	Utility:	Data Port	Location: Ethernet port should be located within 5 ft of machine within the enclosed service area of the sterilizer.			
	Connection Method:	TCP/IP Ethernet to hospital network			X	
	Connection Quantity:	One (1) RJ45 Ethernet port per sterilizer			X	
	Facility Wiring:	*Cat-5, Cat-6 or Cat-6e wire			X	
	NIC/Com Speed:	10/100 Mbps Networking Port (RJ45)			X	
	Broadcast Method:	Unicast			X	
	MTU Size:	1500			X	
	Final Connection:	Belimed provided patch cables for final connection		* (By others)		
	Port IP Setup:	Each RJ45 Ethernet Port with individual static IP address			X	
	Utility:	Equipment Area Exhaust	Provide sufficient air exhaust to remove 1.8 kW heat rejection.	Indirect Exhaust	X	
	Connection Type:	Exhaust return grille				
SRV1	Utility (Chamber):	Safety Pressure Relief Valve	Provide connection to safety relief valve and pipe to drain, atmosphere, or as required by local code.	Hard Pipe	X	
	Outlet size:	1 inch / FNPT				
SRV2	Utility (Jacket):	Safety Pressure Relief Valve	Provide connection to safety relief valve and pipe to drain, atmosphere, or as required by local code.	Hard Pipe	X	
	Outlet size:	1 inch / FNPT				
Optional utilities for chilled water cooling (used for reduction of cold water consumption).						
CS	Utility:	Chilled Water Supply		Insulated Hard Pipe	X	
	Connection Size/Type:	1/2 inch / MNPT				
	Pressure:	Min: 30 Max: 90 psig				
	Peak Consumption:	120 kBTU/hr				
	*Consumption per Load:	28 kBTU				
CR	Utility:	Chilled Water Return	Pressure difference ΔP CS/CR must be greater than 7 PSIG.	Insulated Hard Pipe	X	
	Connection Size/Type:	1/2 inch / MNPT				
CW	Utility:	Cold Water	Cold water is used to prime the vacuum pump.	Flex		X
	Connection Size/Type:	1/2 inch / MNPT				
	Pressure:	Min: 30 Max: 70 psig				
	Peak Consumption:	2.2 gal/min				
	*Consumption per Load:	2.6 gal				

CONTINUED ON PAGE 6


**Belimed**  
Infection Control

1535 Hobby Street, Charleston, SC 29405  
Tel: (800) 457-4117 Web: www.belimed.com

## BELIMED MST-V 609-VS2 DOUBLE DOOR STEAM STERILIZER

TECHNICAL SPECIFICATIONS  Technical Specifications for the installation of a Belimed MST-V 609-VS2 Sterilizer.	Dwg. No. :	CUT-609-VS2	Rev. : F
	Drawn By :	A. JONES	Date : 05/11/18
	Scale :	NONE	Page : 5 of 6

ESTIMATED EMISSIONS						
DR	Utility:	Open Drain	Provide flush mounted floor sink and trap per local code.	1-1/4" Copper pipe	X	
	Connection Size:	1-1/4 inch				
	Discharge Flow Rate:	5.3 gal/min				
	*Consumption per Load:	59 gal				
	Medium:	Noise Radiation	In accordance with ISO3746: 1995 Testing Standards.			
	Radiation (Net):	65 dBA				
	Medium:	Heat Radiation	Heat dissipated into service room with ambient temperature of 86°F.			
	Radiation (Net):	1.8 kWh				
PHYSICAL SPECIFICATIONS						
	Parameter:	Carry-In Dimensions	Machine Alone (i.e. removed from packaging)			
	Height:	81 in				
	Width:	39 in				
	Length:	56 in				
	Parameter:	Chamber Usable Dimensions				
	Height:	26 in				
	Width:	26 in				
	Length:	39.3 in				
	Parameter:	Weights				
	Transport Weight:	2000 lbs	Transport Weight = Machine + Crating			
	Operating Weight:	2470 lbs	Operational Weight = Machine + Load			
	OSHPD NUMBER:	OPM-0131-13				
*Consumptions calculated under pre-vac cycle at 270°F and water temperature of 63°F. Average load/cycle time one hour.						
Additional Information: - MNPT = Male pipe thread      -FNPT = Female pipe thread - Others must provide service valves and strainers for steam and water supply. - All utility supplies and connections are customer's responsibility. -Chilled water final connections and insulation by others.						
						TS-609-VS2_RevG

 <p>1535 Hobby Street, Charleston, SC 29405 Tel: (800) 457-4117 Web: www.belimed.com</p>	<b>BELIMED MST-V 609-VS2</b> DOUBLE DOOR STEAM STERILIZER		
	TECHNICAL SPECIFICATIONS		Dwg. No. : CUT-609-VS2    Rev. : F
	Technical Specifications for the installation of a Belimed MST-V 609-VS2 Sterilizer.		Drawn By : A. JONES    Date : 05/11/18
			Scale : NONE    Page : 6 of 6