

**Belimed**

Infection Control

2325 Charleston Regional Parkway, Charleston, SC 29492  
Tel: (800) 457-4117 Web: [www.belimed.com](http://www.belimed.com)

**CA9618-HS2RM**  
RIGHT CHAMBER HORIZONTAL STERILIZER

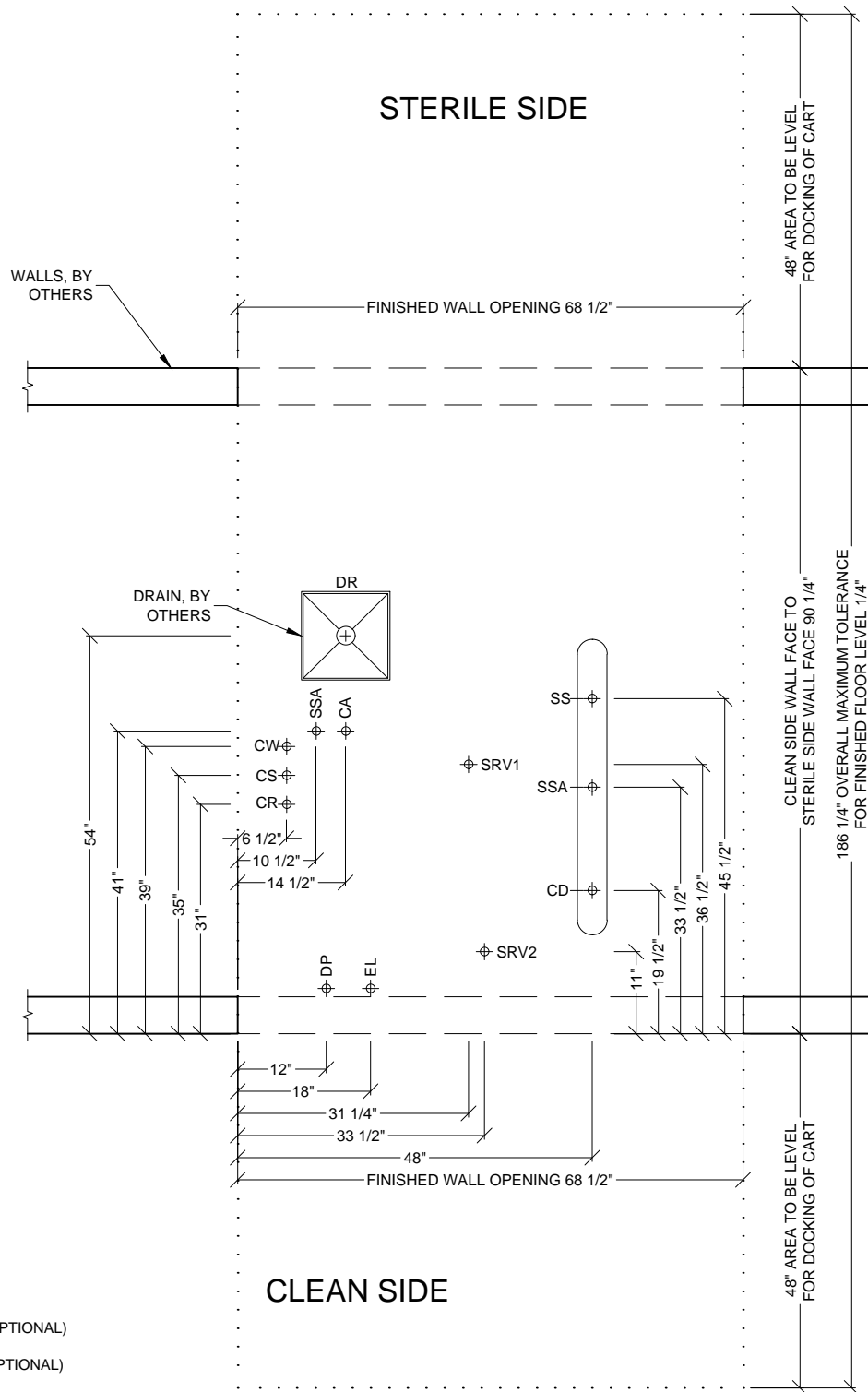
3D IMAGE

Typical installation of a Belimed  
CA9618-HS2RM Horizontal Sterilizer.

Dwg. No. : CUT-CA9618HS2RM Rev. : B

Drawn By : A. HERRON Date : 7/28/16

Scale : N.T.S. Page : 1 of 12



- CA — COMPRESSED AIR  
 CD — CONDENSATE  
 CR — CHILLED WATER RETURN (OPTIONAL)  
 CS — CHILLED WATER SUPPLY (OPTIONAL)  
 CW — COLD WATER  
 DR — FLOOR DRAIN  
 DP — DATA PORT  
 EL — ELECTRICITY FOR MACHINE  
 SRV — SAFETY PRESSURE RELIEF VALVE  
 SS — STEAM SUPPLY  
 SSA — STEAM SUPPLY FROM MANIFOLD

## CA9618-HS2RM

### RIGHT CHAMBER HORIZONTAL STERILIZER

PLAN VIEW  
 Typical site preparation of a Belimed  
 CA9618-HS2RM Horizontal Sterilizer.

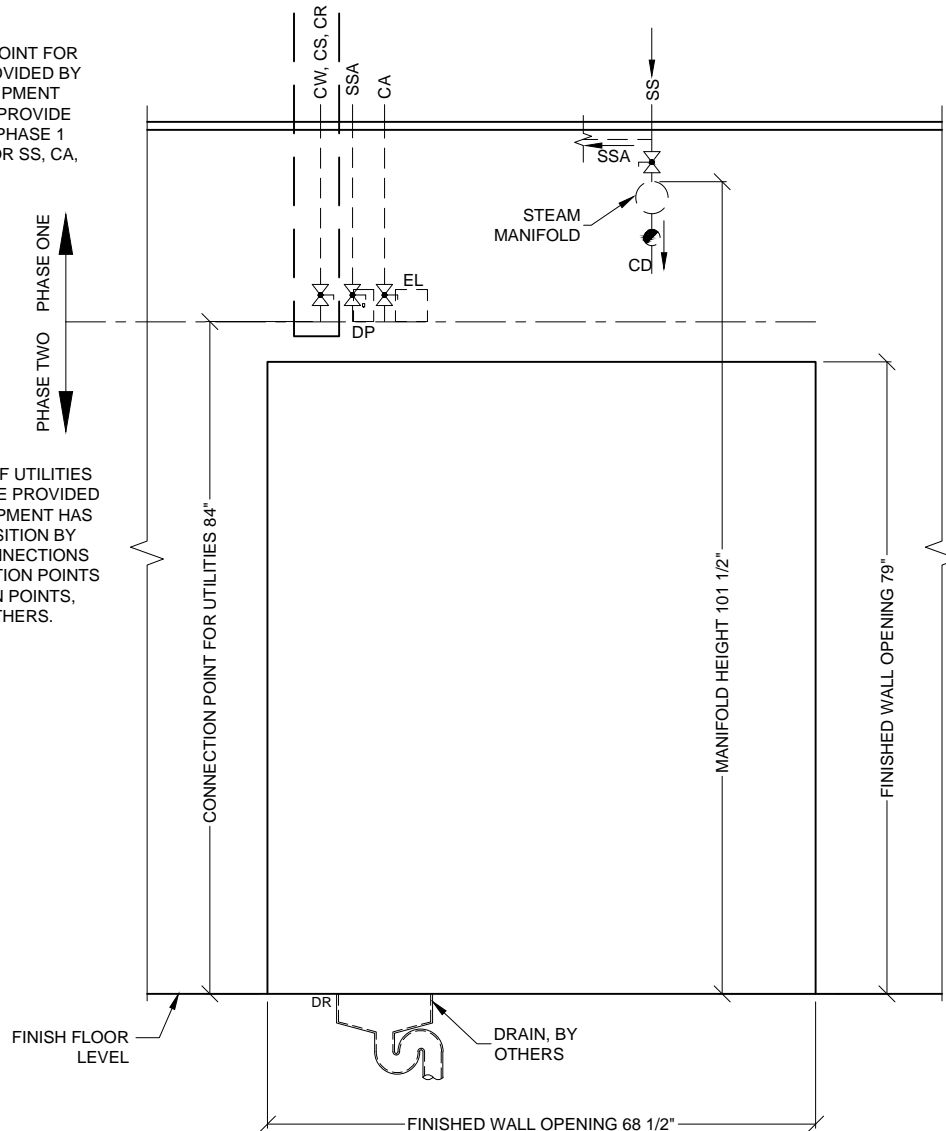
Dwg. No. :	CUT-CA9618HS2RM	Rev. :	B
Drawn By :	A. HERRON	Date :	7/28/16
Scale :	1/2" = 1'	Page :	2 of 12

C  
10

**PHASE 1** CONNECTION POINT FOR UTILITIES ARE TO BE PROVIDED BY OTHERS **BEFORE** EQUIPMENT INSTALLATION BEGINS. PROVIDE SHUT-OFF VALVES AT PHASE 1 CONNECTION POINTS FOR SS, CA, CW, CS, CR.

PHASE ONE  
↑  
PHASE TWO  
↓

**PHASE 2** CONNECTION OF UTILITIES TO EQUIPMENT ARE TO BE PROVIDED BY OTHERS **AFTER** EQUIPMENT HAS BEEN SET IN FINAL POSITION BY BELIMED. ALL FINAL CONNECTIONS (FROM PHASE 1 CONNECTION POINTS TO FINAL CONNECTION POINTS, PHASE 2) ARE BY OTHERS.



CA — COMPRESSED AIR  
CD — CONDENSATE  
CR — CHILLED WATER RETURN (OPTIONAL)  
CS — CHILLED WATER SUPPLY (OPTIONAL)  
CW — COLD WATER  
DP — DATA PORT  
DR — FLOOR DRAIN  
EL — ELECTRICITY FOR MACHINE  
SS — STEAM SUPPLY  
SSA — STEAM SUPPLY FROM MANIFOLD

\*SEE DETAIL D/10 FOR CHILLED WATER BYPASS.

## LEGEND

### SYMBOLS

— SERVICE SHUT-OFF VALVE, BY OTHERS  
— STEAM TRAP, BY OTHERS

**Belimed**

Infection Control

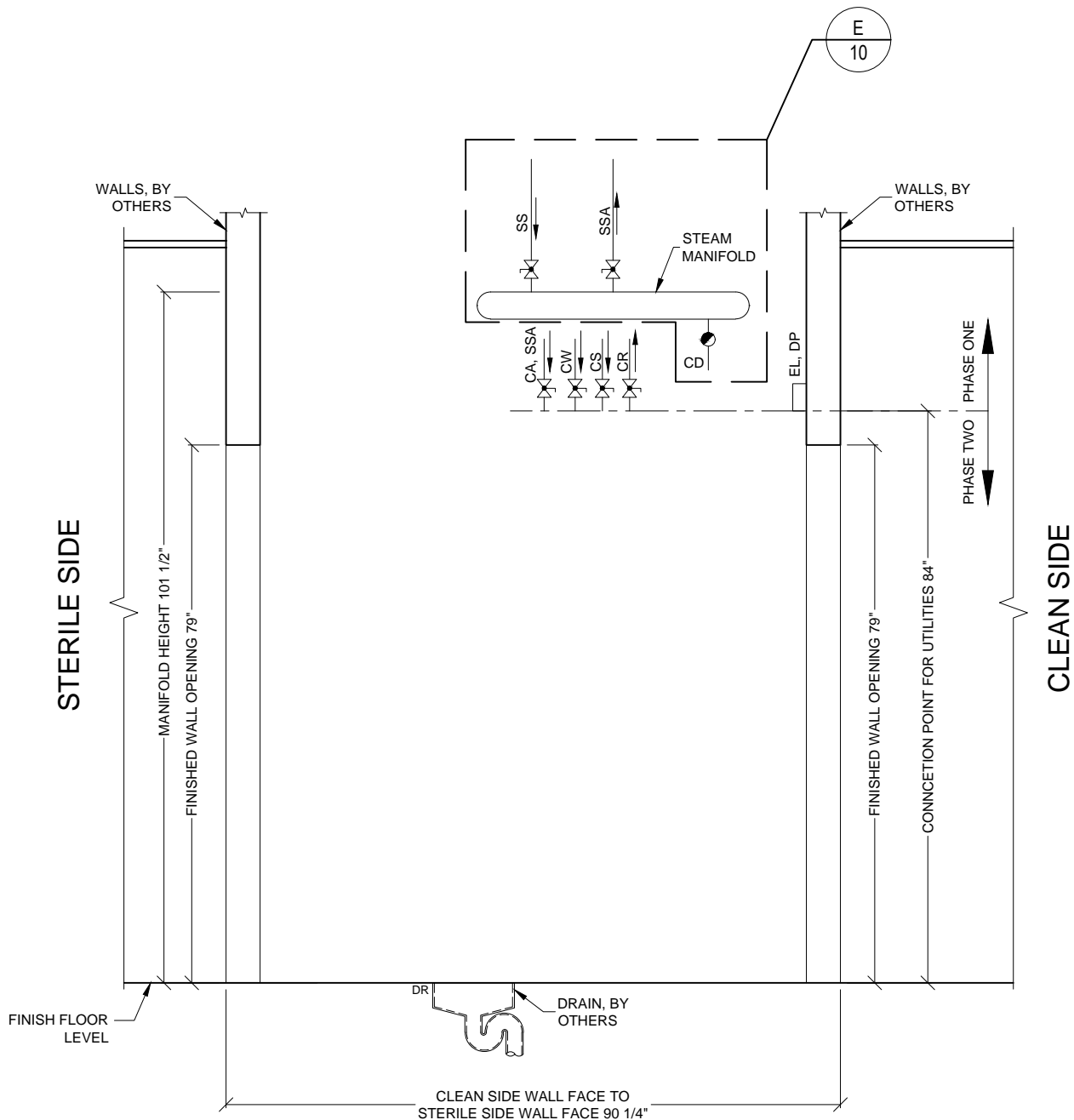
2325 Charleston Regional Parkway, Charleston, SC 29492  
Tel: (800) 457-4117 Web: www.belimed.com

## CA9618-HS2RM RIGHT CHAMBER HORIZONTAL STERILIZER

FRONT ELEVATION

Typical site preparation of a Belimed  
CA9618-HS2RM Horizontal Sterilizer.

Dwg. No. :	CUT-CA9618HS2RM	Rev. :	B
Drawn By :	A. HERRON	Date :	7/28/16
Scale :	1/2" = 1'	Page :	3 of 12



- CA — COMPRESSED AIR  
 CD — CONDENSATE  
 CR — CHILLED WATER RETURN (OPTIONAL)  
 CS — CHILLED WATER SUPPLY (OPTIONAL)  
 CW — COLD WATER  
 DP — DATA PORT  
 DR — FLOOR DRAIN  
 EL — ELECTRICITY FOR MACHINE  
 SS — STEAM SUPPLY  
 SSA — STEAM SUPPLY FROM MANIFOLD

#### LEGEND

##### SYMBOLS

- SERVICE SHUT-OFF VALVE, BY OTHERS  
 — STEAM TRAP, BY OTHERS

**Belimed**

Infection Control

2325 Charleston Regional Parkway, Charleston, SC 29492  
 Tel: (800) 457-4117 Web: www.belimed.com

## CA9618-HS2RM

### RIGHT CHAMBER HORIZONTAL STERILIZER

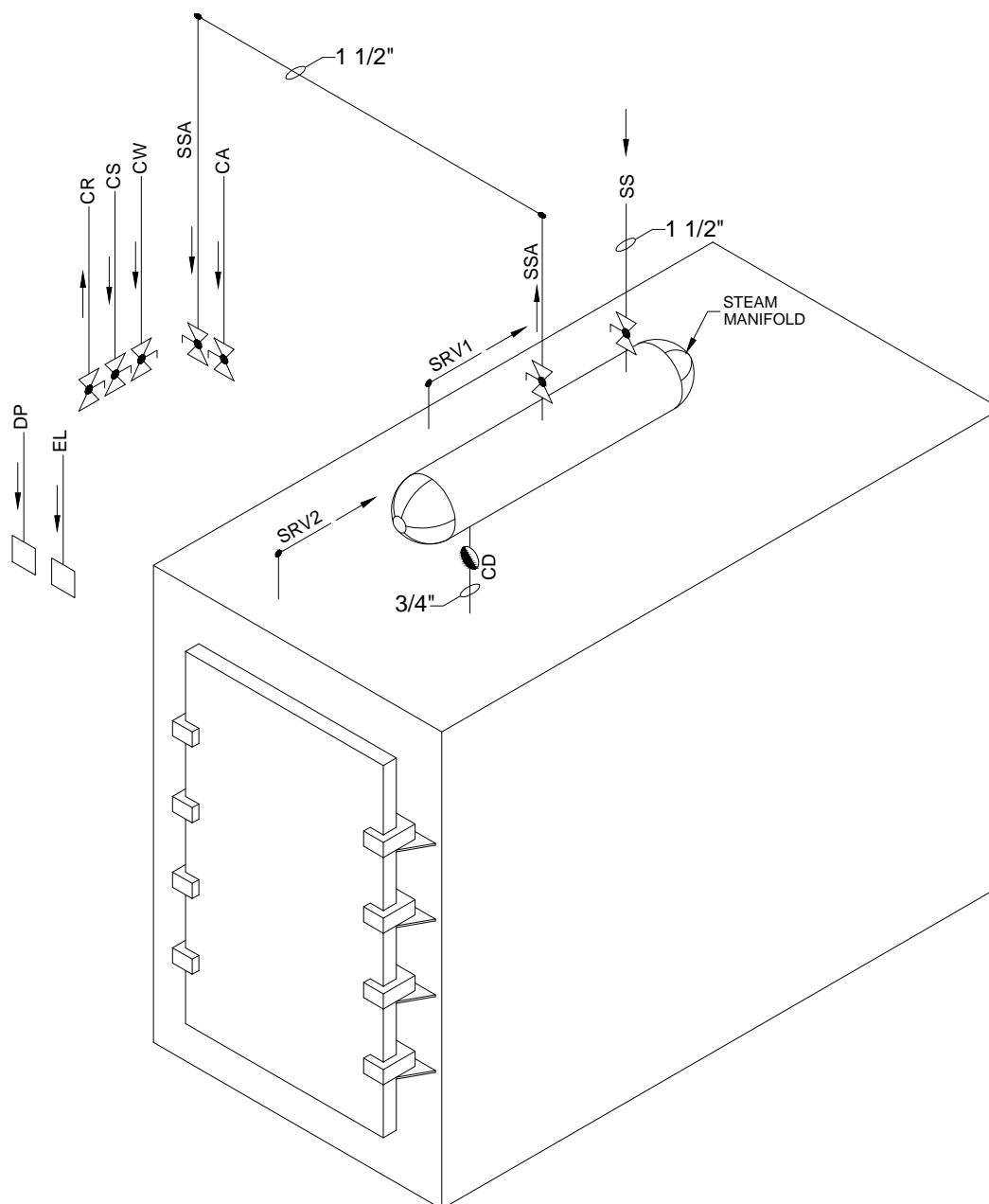
SIDE ELEVATION

Typical site preparation of a Belimed  
 CA9618-HS2RM Horizontal Sterilizer.

Dwg. No. : CUT-CA9618HS2RM Rev. : B

Drawn By : A. HERRON Date : 7/28/16

Scale : 1/2" = 1' Page : 4 of 12



CA — COMPRESSED AIR  
 CD — CONDENSATE  
 CR — CHILLED WATER RETURN (OPTIONAL)  
 CS — CHILLED WATER SUPPLY (OPTIONAL)  
 CW — COLD WATER  
 EL — ELECTRICITY FOR MACHINE  
 SRV — SAFETY PRESSURE RELIEF VALVE  
 SS — STEAM SUPPLY  
 SSA — STEAM SUPPLY FROM MANIFOLD

#### LEGEND

##### SYMBOLS

— SERVICE SHUT-OFF VALVE, BY OTHERS  
 — STEAM TRAP, BY OTHERS

# Belimed

Infection Control

2325 Charleston Regional Parkway, Charleston, SC 29492  
 Tel: (800) 457-4117 Web: www.belimed.com

## CA9618-HS2RM

### RIGHT CHAMBER HORIZONTAL STERILIZER

TYPICAL ISOMETRIC VIEW

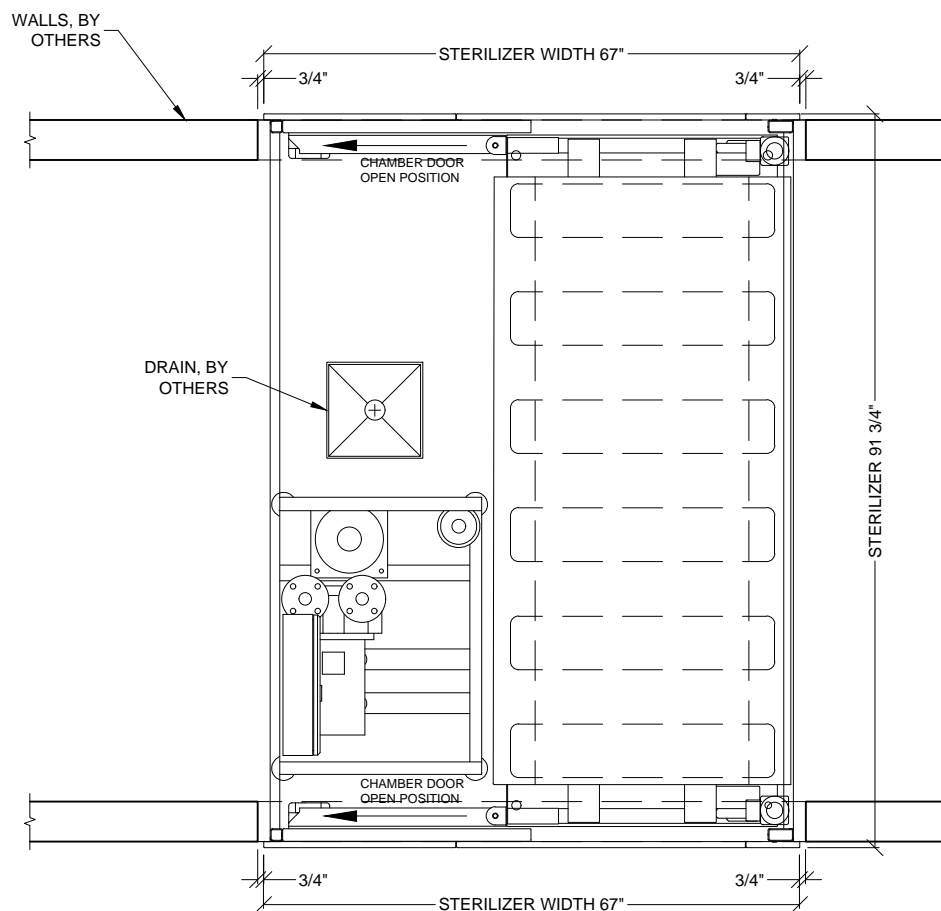
Typical utility piping diagram of a Belimed CA9618-HS2RM Horizontal Sterilizer.

Dwg. No. : CUT-CA9618HS2RM Rev. : B

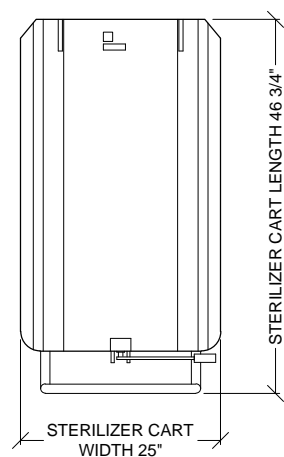
Drawn By : A. HERRON Date : 7/28/16

Scale : N.T.S. Page : 5 of 12

## STERILE SIDE



## CLEAN SIDE



# Belimed

Infection Control

2325 Charleston Regional Parkway, Charleston, SC 29492  
Tel: (800) 457-4117 Web: www.belimed.com

## CA9618-HS2RM RIGHT CHAMBER HORIZONTAL STERILIZER

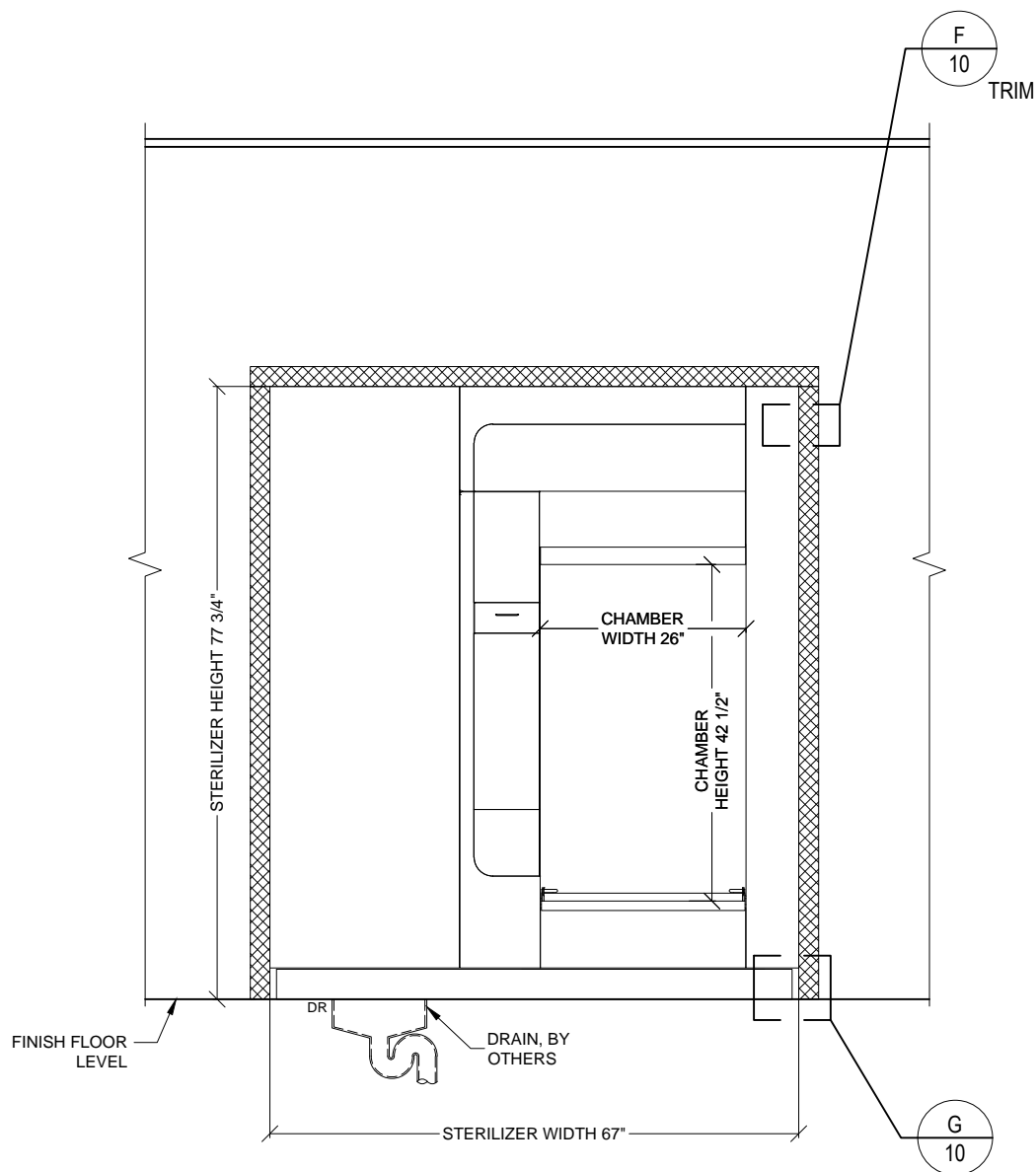
### PLAN VIEW

Typical equipment layout of a Belimed  
CA9618-HS2RM Horizontal Sterilizer.

Dwg. No.: CUT-CA9618HS2RM Rev.: B

Drawn By: A. HERRON Date: 7/28/16

Scale: 1/2" = 1' Page: 6 of 12



#### LEGEND

##### HATCH TYPES



STAINLESS STEEL TRIM, BY BELIMED

# Belimed

Infection Control

2325 Charleston Regional Parkway, Charleston, SC 29492  
Tel: (800) 457-4117 Web: www.belimed.com

## CA9618-HS2RM

### RIGHT CHAMBER HORIZONTAL STERILIZER

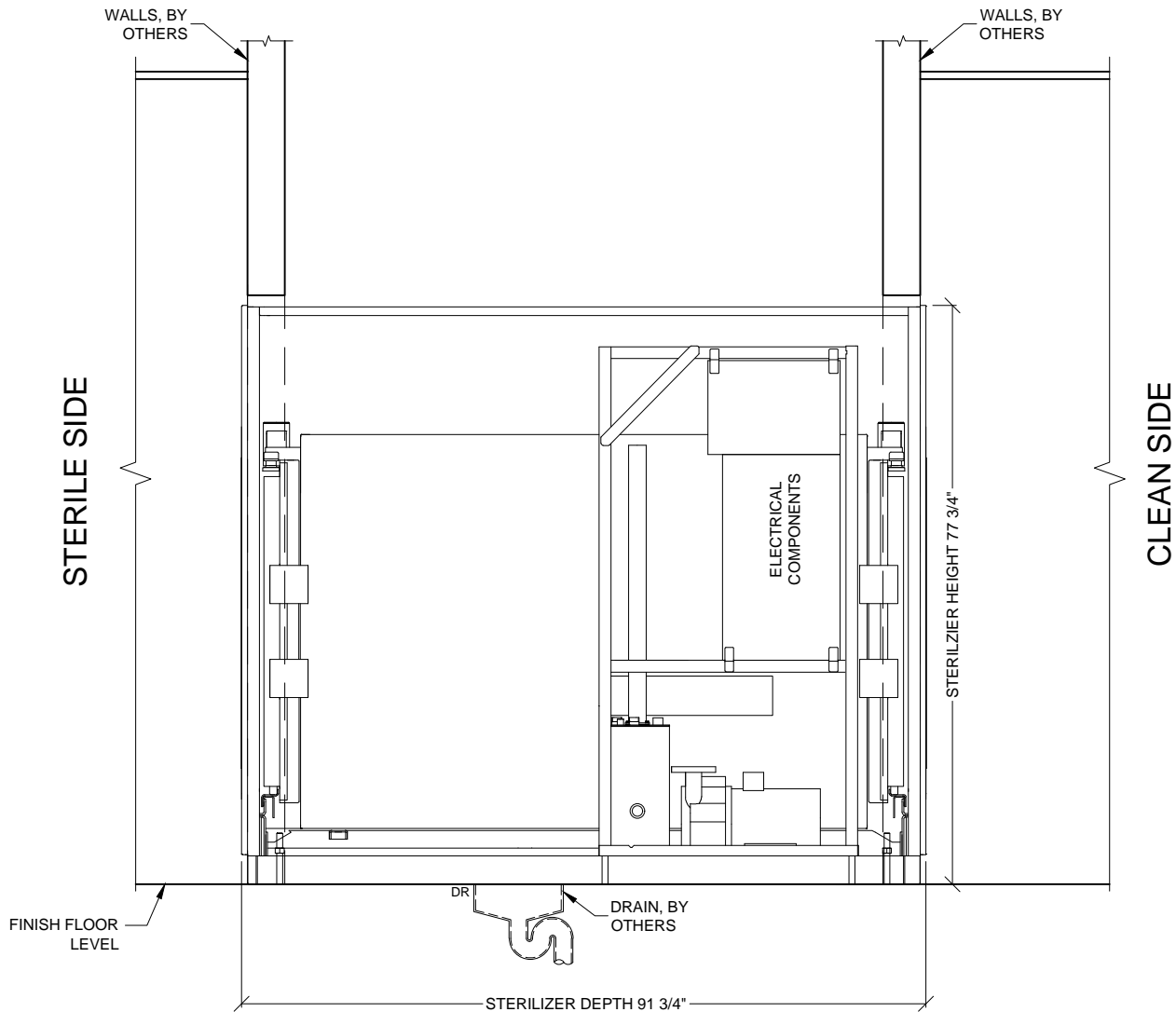
FRONT ELEVATION

Typical equipment layout of a Belimed  
CA9618-HS2RM Horizontal Sterilizer.

Dwg. No.: CUT-CA9618HS2RM Rev.: B

Drawn By: A. HERRON Date: 7/28/16

Scale: 1/2" = 1' Page: 7 of 12



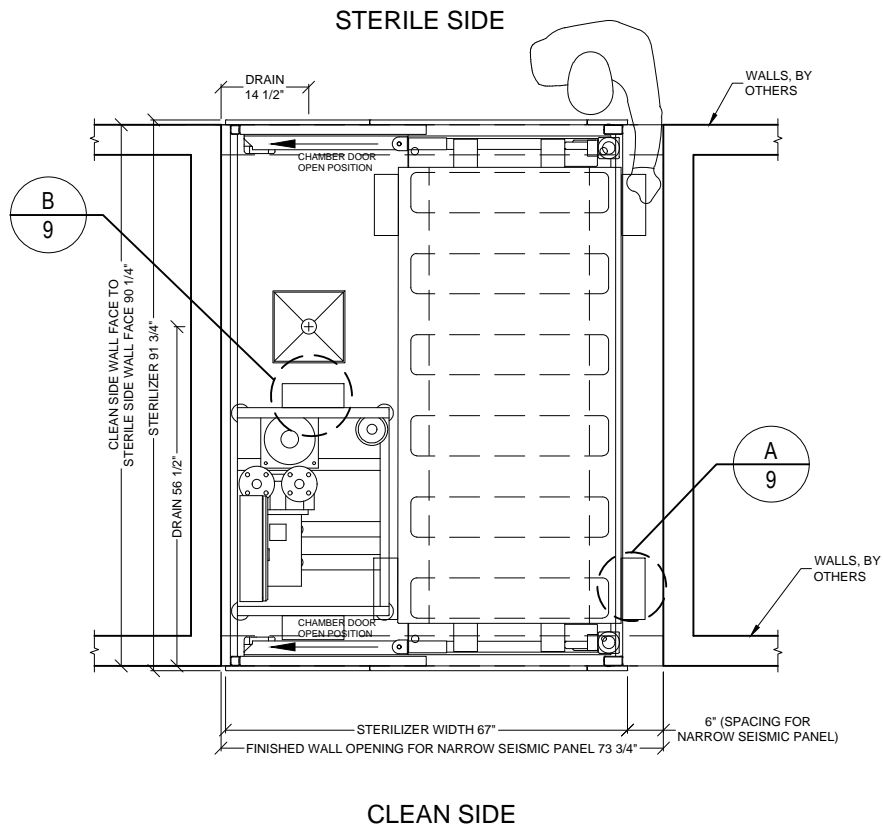
## CA9618-HS2RM

### RIGHT CHAMBER HORIZONTAL STERILIZER

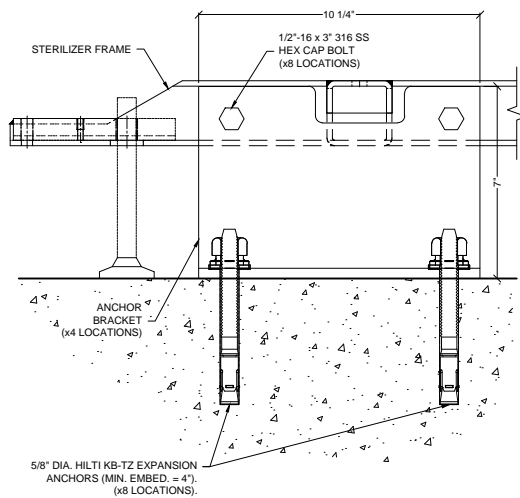
SIDE ELEVATION

Typical equipment layout of a Belimed CA9618-HS2RM Horizontal Sterilizer.

Dwg. No. :	CUT-CA9618HS2RM	Rev. :	B
Drawn By :	A. HERRON	Date :	7/28/16
Scale :	1/2" = 1'	Page :	8 of 12



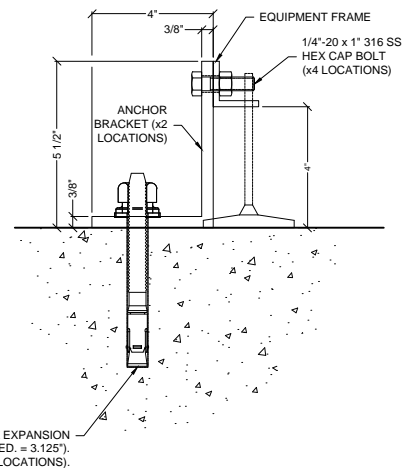
\*ENCLOSURE KIT 107-9259 (x2) REQUIRED



\*DETAIL FOR REGIONS REQUIRING SEISMIC ANCHORAGE.

A

TYP. SEISMIC ANCHORING DETAIL  
HORIZONTAL STERILIZER CHAMBER  
N.T.S.



\*DETAIL FOR REGIONS REQUIRING SEISMIC ANCHORAGE.

B

TYP. SEISMIC ANCHORING DETAIL  
HORIZONTAL STERILIZER SKID  
N.T.S.

**Belimed**

Infection Control

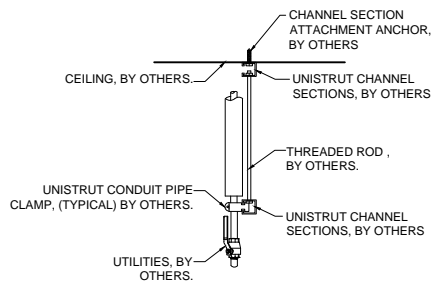
2325 Charleston Regional Parkway, Charleston, SC 29492  
Tel: (800) 457-4117 Web: www.belimed.com

# CA9618-HS2RM RIGHT CHAMBER HORIZONTAL STERILIZER

PLAN VIEW

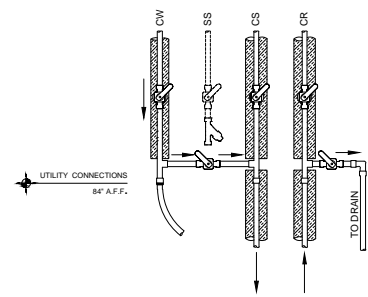
Typical equipment layout of a Belimed CA9618-HS2RM Horizontal Sterilizer where service clearance requires seismic panel.

Dwg. No. :	CUT-CA9618HS2RM	Rev. :	B
Drawn By :	A. HERRON	Date :	7/28/16
Scale :	1/2" = 1'	Page :	9 of 12



NOTE: REFER TO LOCAL BUILDING CODES AND/OR SEISMIC ANCHORAGE REQUIREMENTS FOR FINAL ATTACHMENT METHOD.

1. UTILITY ATTACHMENT ASSEMBLY SHALL FALL WITH IN THE FOOTPRINT OF THE SPECIFIED EQUIPMENT.
2. REFER TO EQUIPMENT PLUMBING, MECHANICAL AND ELECTRICAL PLANS FOR UTILITY LOCATIONS.
3. SEE TECHNICAL SPECIFICATIONS FOR UTILITY SIZING, INPUT REQUIREMENTS, AND FINAL CONNECTIONS.

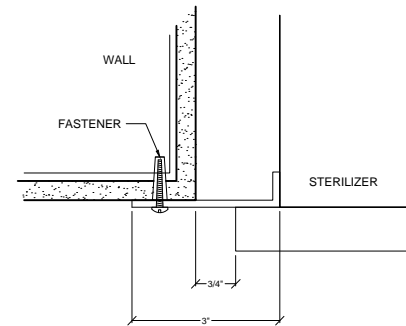
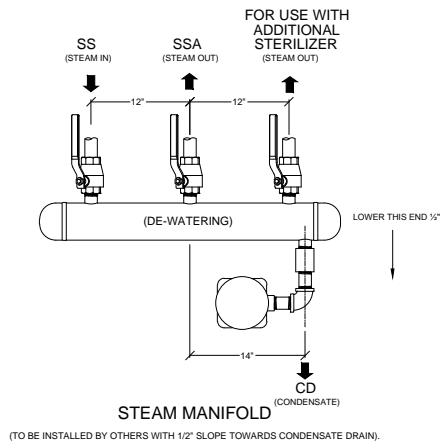


MANUAL SERVICE VALVES, BY OTHERS.

CW - COLD WATER  
CS - CHILLED WATER SUPPLY  
CR - CHILLED WATER RETURN

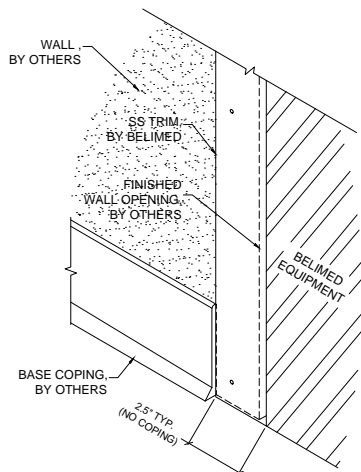
**C** RECOMMENDED TYPICAL CEILING HUNG UTILITY ATTACHMENT DETAIL (SIDE VIEW) N.T.S.

**D** TYP. (OPTIONAL) BY PASS DETAIL CHILLED WATER CONNECTION N.T.S.



**E** TYPICAL STEAM MANIFOLD DETAIL N.T.S.

**F** TYP. TRIM ATTACHMENT DETAIL HORIZONTAL STERILIZER N.T.S.



**G** BASE COPING AT WALL OPENING N.T.S.

# CA9618-HS2 STERILIZER - TECHNICAL SPECIFICATIONS

## REQUIRED INPUTS

Symbol	Description	Value	Utility Notes	Connection Method	Final Utility Conn. By:	
					Others	Belimed
SS	Utility:	Steam	Steam must be dry, saturated, and free from all impurities such as gases, oil, dirt, or other contaminants. Provide adequate steam strainer typical for sterilizers. All steam drops must be piped from top of steam supply line.	Hard Pipe	X	
	Connection Size/Type:	1 1/2 inch / FNPT				
	Pressure:	Min: 40 Max: 50 psig				
	Peak Consumption:	6.25 lbs/min				
CW	*Consumption per Load:	88 lbs	Cold water is used to prime the condensate pump and cool the condensate. Colder water temperatures will result in less water consumption. Optimal temperature is 60°F. Temperature must be less than or equal to 85°F. TDS must be less than or equal to less than 400 ppm. Back flow prevention must be supplied by customer, as per local code.	Flex		X
	Utility:	Cold Water				
	Connection Size/Type:	1 inch / MNPT				
	Pressure:	Min: 30 Max: 70 psig				
CA	Peak Consumption:	14.0 gal/min	Air must be dry and oil free. Used to operate pneumatic control system.	Flex		X
	*Consumption per Load:	167 gal				
	Utility:	Compressed Air				
	Connection Size/Type:	1/4 inch / FNPT				
EL	Pressure:	Min: 70 Max: 100 psig	Junction Box with Receptacle. NEMA 15-30R to NEC local codes. Grainger part No. 5Z889.	Receptacle		X
	Peak Consumption:	6 CFM				
	*Consumption per Load:	14 ft³				
	Utility:	Electric				
SRV1	Connection Type:	Receptacle	Provide sufficient air exhaust to remove 4 kW heat dissipation from service room.		X	
	Voltage (Nominal):	208 VAC				
	Voltage (Phase):	3 Phase				
	Voltage (Frequency):	60 Hz				
SRV2	Circuit Protection:	30 Amps	Provide connection to safety relief valve and pipe to drain, atmosphere, or as required by local code.	Hard Pipe with Union	X	
	Peak Consumption:	4.9 kW				
	*Consumption per Load:	4.2 kW-h				
	Utility:	Equipment Area Exhaust				
SSA	Connection Type:	Exhaust return grille	Pipe from manifold to sterilizers by others.	Hard Pipe	X	
	Utility (Chamber):	Safety Pressure Relief Valve				
	Outlet size:	1 1/2 inch / MNPT				
	Utility (Jacket):	Safety Pressure Relief Valve				
DP	Outlet size:	1 inch / MNPT	Location: Ethernet port should be located within 5 ft of machine within the enclosed service area of the sterilizer.		X	
	Utility:	Data Port				
	Connection Method:	TCP/IP Ethernet to hospital network				
	Connection Quantity:	One (1) RJ45 Ethernet port per sterilizer				
CD	Facility Wiring:	*Cat-5, Cat-6 or Cat-6e wire	* (By others)	Hard Pipe	X	
	NIC/Com Speed:	10/100 Mbps Networking Port (RJ45)				
	Broadcast Method:	Unicast				
	MTU Size:	1500				
DR	Final Connection:	Belimed provided patch cables for final connection	Each RJ45 Ethernet Port with individual static IP address		X	
	Port IP Setup:	Each RJ45 Ethernet Port with individual static IP address				
	Utility:	Open Drain				
	Connection Size:	2 inch				
CD	Discharge Flow Rate:	16.4 gal/min	Condensate removal by customer per local code.	Hard Pipe	X	
	*Consumption per Load:	177.6 gal (w/o chilled water)				
	Utility:	Condensate				
	Connection Size/Type:	3/4 inch / FNPT				

## ESTIMATED EMISSIONS

DR	Utility:	Open Drain	Provide flush mounted floor sink and trap per local code.	2" Copper Pipe	X	
	Connection Size:	2 inch				
	Discharge Flow Rate:	16.4 gal/min				
	*Consumption per Load:	177.6 gal (w/o chilled water)				
CD	Medium:	Noise Radiation	In accordance with ISO3746: 1995 Testing Standards.			
	Radiation (Net):	57 dBA				
	Medium:	Heat Radiation				
	Radiation (Net):	4 kWh				

CONTINUED ON PAGE 12



Infection Control

2325 Charleston Regional Parkway, Charleston, SC 29492  
Tel: (800) 457-4117 Web: www.belimed.com

## CA9618-HS2RM RIGHT CHAMBER HORIZONTAL STERILIZER

### TECHNICAL SPECIFICATIONS

Technical Data for the installation of a Belimed CA9618-HS2RM Horizontal Sterilizer.

Dwg. No. :	CUT-CA9618HS2RM	Rev. :	B
Drawn By :	A. HERRON	Date :	7/28/16
Scale :	NONE	Page :	11 of 12

**Optional utilities for chilled water cooling** (used for reduction of cold water consumption).

CS	<b>Utility:</b>	<b>Chilled Water Supply</b>	Feed water at ~50°F. Approximate $\Delta T = 15/25$ K.  Cooling Capacity: average/peak	Insulated Hard Pipe	<b>X</b>	
	<b>Connection Size/Type:</b>	1 1/4 inch / MNPT				
	<b>Pressure:</b>	Min: 30 Max: 70 psig				
	<b>Peak Flow Rate:</b>	19.8 gal/min				
	<b>Peak Consumption:</b>	678 kBTU/hr				
	<b>*Consumption per Load:</b>	66 kBTU				
CR	<b>Utility:</b>	<b>Chilled Water Return</b>	Pressure difference $\Delta P$ CS/CR must be greater than 7 PSIG.	Insulated Hard Pipe	<b>X</b>	
	<b>Connection Size/Type:</b>	1 1/4 inch / MNPT				
CW	<b>Utility:</b>	<b>Cold Water</b>	Cold water is used to prime the condensate pump. Water should be softened to 0-60 ppm. Back flow prevention must be supplied by customer, as per local code.	Flex		<b>X</b>
	<b>Connection Size/Type:</b>	1/2 inch / MNPT				
	<b>Peak Consumption:</b>	2.2 gal/min				
	<b>*Consumption per Load:</b>	2.6 gal				

**PHYSICAL SPECIFICATIONS**

	Parameter:	Carry-In Dimensions			Machine Alone (i.e. removed from packaging)
		Chamber	Tech Frame	Face Panel	
	Height:	70.4 in	72 in	78.7 in	
	Width:	39 in	31 in	70.9 in	
	Length:	90 in	40 in	31.5 in	
	Parameter:	Chamber Usable Dimensions			
	Height:	42.5 in			
	Width:	26 in			
	Length:	79.3 in			
	Parameter:	Weights			Transport Weight = Machine + Crating Operating Weight = Machine + Load
	Transport Weight:	6504 lbs			
	Operating Weight:	6241 lbs			
	OSHPD Number:	OPM-0329-13			

\*Consumptions calculated under pre-vac cycle with 43 psig at 270° F and water temperature of 60° F.

**Additional Information:**

- MNPT = Male pipe thread - FNPT = Female pipe thread
- Others must provide service valves and strainers for steam and water supply.
- All utility supplies are other's responsibility.
- Left or Right side chamber is available.

TS-CA9618-HS2\_RevB



**Infection Control**

2325 Charleston Regional Parkway, Charleston, SC 29492  
Tel: (800) 457-4117 Web: www.belimed.com

**CA9618-HS2RM**  
RIGHT CHAMBER HORIZONTAL STERILIZER

TECHNICAL SPECIFICATIONS CONT  Technical Data for the installation of a Belimed CA9618-HS2RM Horizontal Sterilizer.	Dwg. No. :	CUT-CA9618HS2RM	Rev. :	B
	Drawn By :	A. HERRON	Date :	7/28/16
	Scale :	NONE	Page :	12 of 12