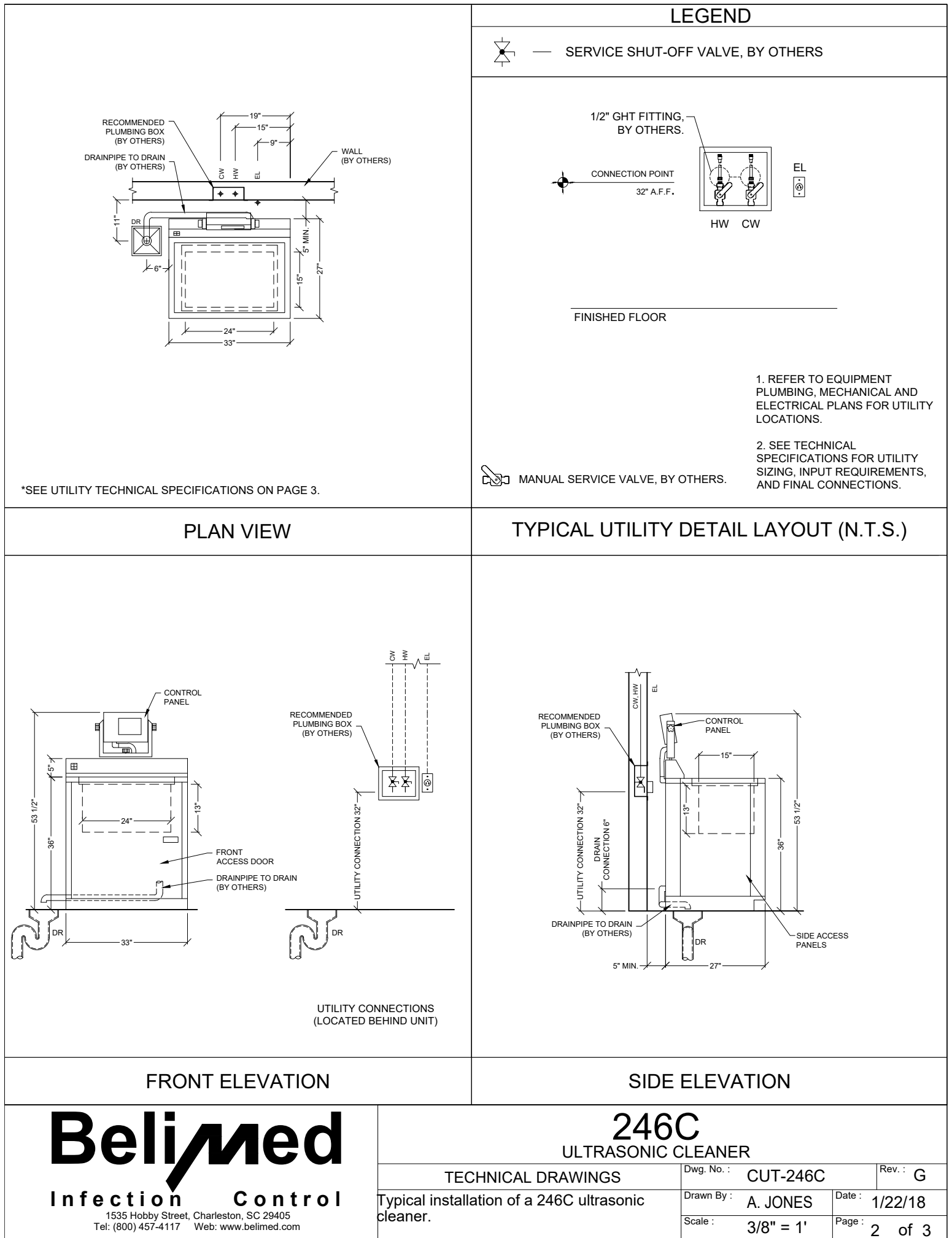


**Belimed**  
Infection Control

1535 Hobby Street, Charleston, SC 29405  
Tel: (800) 457-4117 Web: [www.belimed.com](http://www.belimed.com)

## 246C ULTRASONIC CLEANER

3D VIEW Typical installation of a 246C ultrasonic cleaner.	Dwg. No. :	CUT-246C	Rev. : G
	Drawn By :	A. JONES	Date : 1/22/18
	Scale :	N.T.S.	Page : 1 of 3



# 246C ULTRASONIC CLEANER - TECHNICAL SPECIFICATIONS

## REQUIRED INPUTS

Symbol	Description	Value	Utility Notes	Connection Method	Final Utility Conn. By	
					Others	Belimed
HW	Utility:	Hot Water	Hot water must have a total hardness less than 85 ppm. Temperature range of 100° to 140°F.	Flex		X
	Connection Size/Type:	1/2 Inch / GHT				
	Pressure:	Min: 40 Max: 60 psig				
	Peak Consumption:	10 gal/min				
	*Consumption per Load:	Min: 9 gal / Max: 17 gal				
CW	Utility:	Cold Water	Cold water must have a total hardness less than 170 ppm.	Flex		X
	Connection Size/Type:	1/2 Inch / GHT				
	Pressure:	Min: 40 Max: 60 psig				
	Peak Consumption:	1.8 gal/min				
	*Consumption per Load:	Min: 0.4 Max: 0.4 gal				
EL	Utility:	Electric	Junction Box with Receptacle NEMA 5-20R to NEC local codes.	Receptacle		X
	Connection Type:	Receptacle				
	Voltage (Phase):	1 Phase				
	Voltage (Nominal):	120 VAC				
	Circuit Protection:	20 Amps				
	Peak Consumption:	13.4 Amps				
	Power Consumption per Load:	Min. 1.2 Max 1.6 kW-h				

## ESTIMATED EMISSIONS

DR	Utility:	Open Drain	Provide floor/sink and trap, to accommodate maximum discharge rate. Optional Drain pump assembly <b>with 1/2" GHT</b> connection for areas with wall drain location or floor drain located greater than 12 feet from unit.	1-1/2" Copper Pipe	X	
	Connection Size/Type:	1 1/2 Inch/ Indirect Drain				
	Discharge Flow Rate:	20.8 gal/min				
	Medium:	Noise Radiation				
	Maximum Radiation (Net):	80 dBA				

## PHYSICAL SPECIFICATIONS

	Parameter:	Carry-In Dimensions	Machine alone (i.e. removed from packaging)
	Height:	53.5 Inch	
	Width:	33 Inch	
	Length:	28.5 Inch	
	Parameter:	Weights	Transport Weight = Machine + Crating  Operational Wt = Machine + Tray + Water + Instruments
	Transport Weight:	400 lbs	
	Operating Weight:	500 lbs	
	OSHPD Number:	OPM-0219-13	

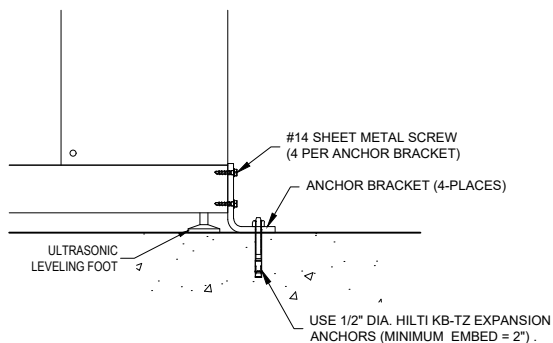
\* Values are for an "Instruments - Normal Cycle". Values will vary with load size, utility inputs, and cycle setup.

### Additional Information:

GHT = Garden Hose Thread

All utility supplies and connections are to be provided by others, per local code.

TS-246C\_RevJ



TYPICAL SEISMIC ANCHORING (N.T.S.)

**NOTE:** OPTIONAL DRAIN PUMP ASSEMBLY AVAILABLE FOR AREAS WITH WALL DRAIN LOCATION OR FLOOR DRAIN LOCATED GREATER THAN 12' FROM UNIT. DISCHARGE RATE OF 13.3-14.0 GAL/MIN. CONNECTION SIZE 1/2" GHT.

# Belimed

Infection Control

1535 Hobby Street, Charleston, SC 29405  
Tel: (800) 457-4117 Web: www.belimed.com

## 246C ULTRASONIC CLEANER

TECHNICAL SPECIFICATIONS	Dwg. No. :	CUT-246C	Rev. :	G
	Drawn By :	A. JONES	Date :	1/22/18
	Scale :	NONE	Page :	3 of 3

Typical installation of a 246C ultrasonic cleaner.