

**Belimed**

**Infection Control**

1535 Hobby Street, Charleston, SC 29405  
Tel: (800) 457-4117 Web: [www.belimed.com](http://www.belimed.com)

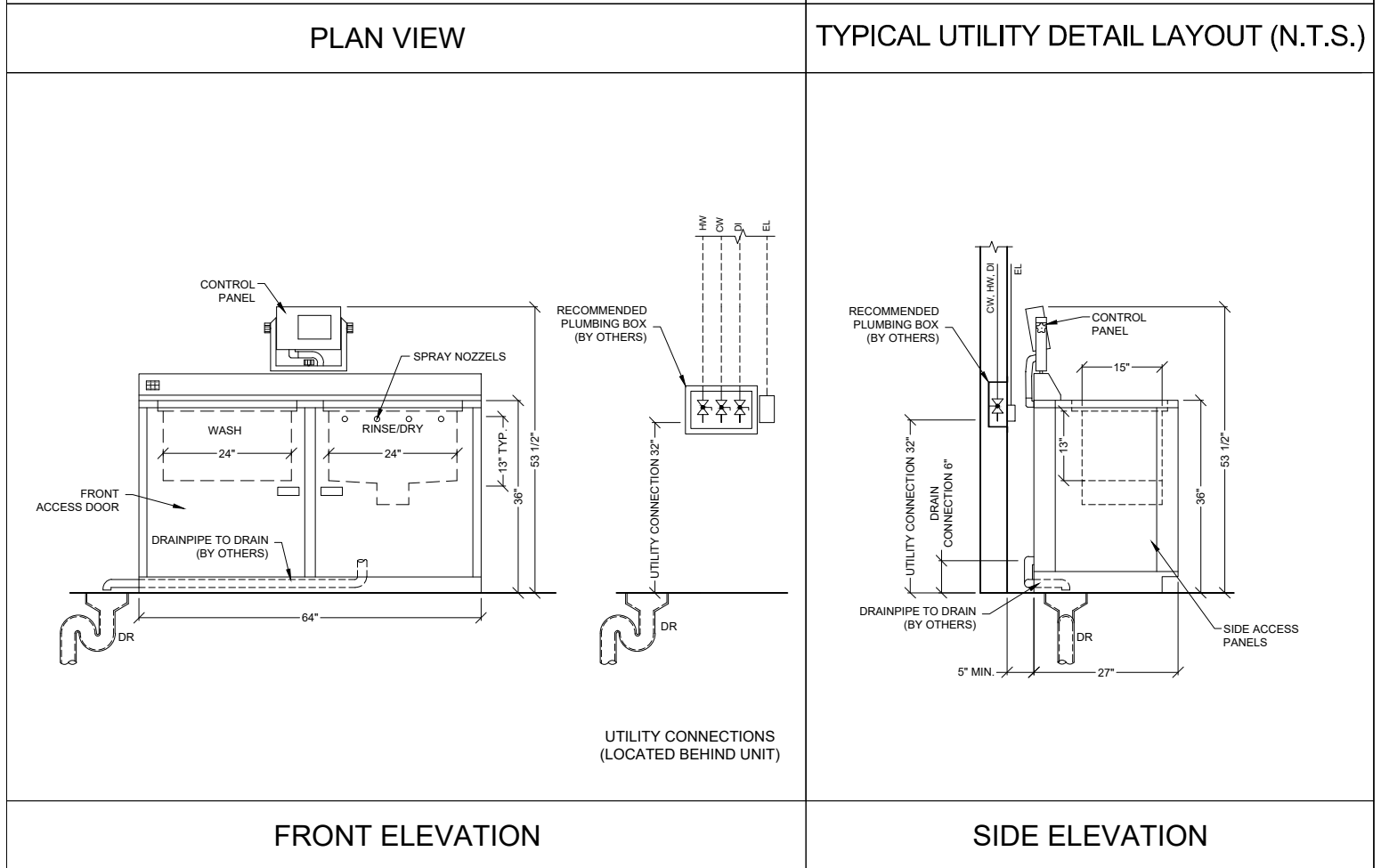
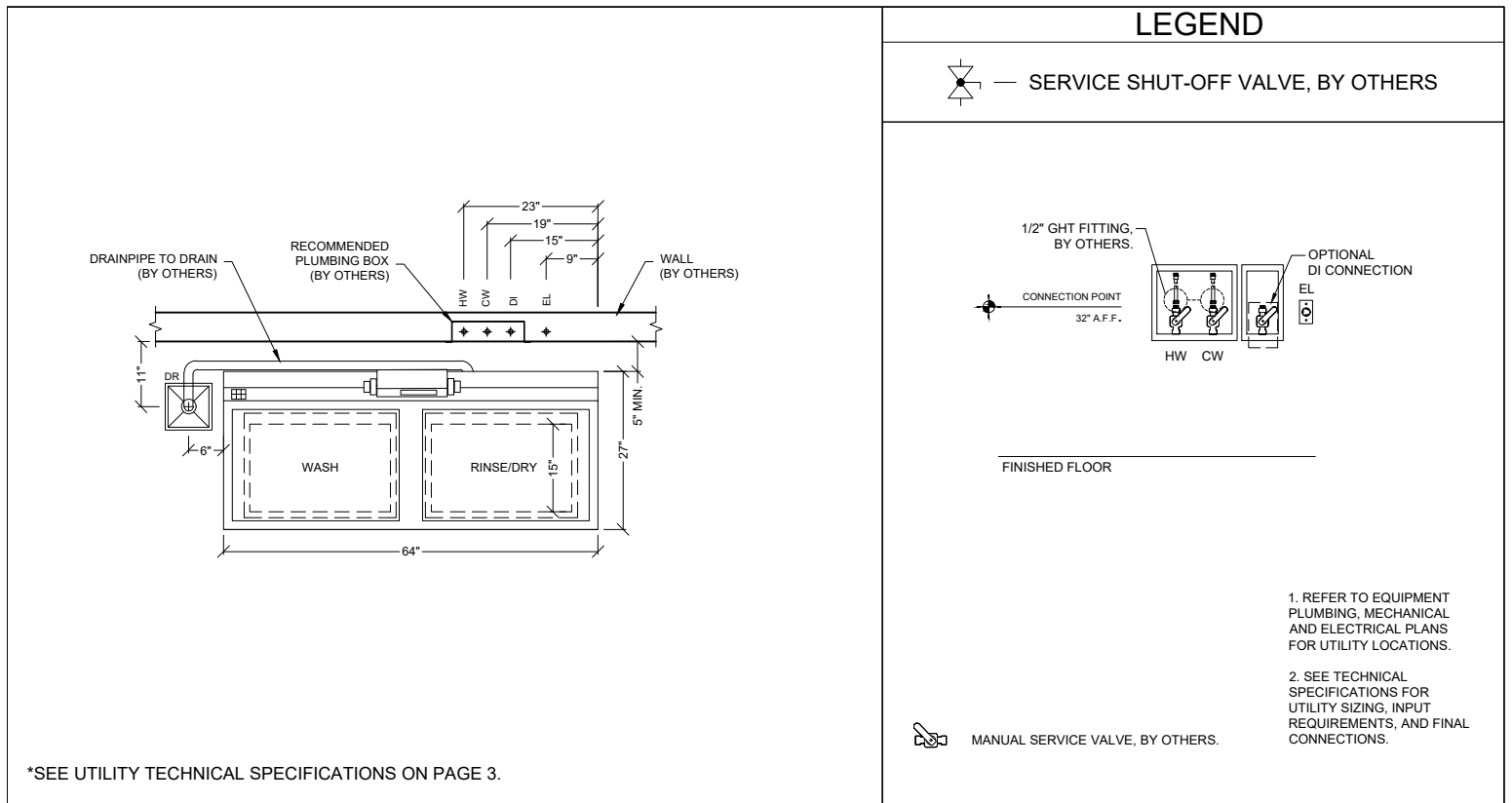
## 422HL

ULTRASONIC CLEANER (WASH/RINSE/DRY)

3D VIEW

Typical installation of a 422HL ultrasonic cleaner.

Dwg. No. :	CUT-422HL	Rev. :	G
Drawn By :	A. JONES	Date :	1/22/18
Scale :	N.T.S.	Page :	1 of 3



**Belimed**  
Infection Control

1535 Hobby Street, Charleston, SC 29405  
Tel: (800) 457-4117 Web: www.belimed.com

## 422HL

ULTRASONIC CLEANER (WASH/RINSE/DRY)

TECHNICAL DRAWINGS	Dwg. No. : CUT-422HL	Rev. : G
Typical installation of a 422HL ultrasonic cleaner.	Drawn By : A. JONES	Date : 1/22/18
	Scale : 3/8" = 1'	Page : 2 of 3

# 422HL ULTRASONIC CLEANER - TECHNICAL SPECIFICATIONS

## REQUIRED INPUTS

Symbol	Description	Value	Utility Notes	Connection Method	Final Utility Conn. By:	
					Others	Belimed
HW	Utility:	Hot Water	Hot water must have a total hardness less than 85 ppm. Temperature range of 100 to 140 °F.	Flex		X
	Connection Size/Type:	1/2 Inch / GHT				
	Pressure:	Min. 40 Max. 60 psig				
	Peak Consumption:	17.4 gal/min				
	*Consumption per Load (min):	9 gal				
CW	Utility:	Cold Water	Cold water must have a total hardness less than 170 ppm. Maximum consumption load based on 15 minute drying cycle at maximum flow rate	Flex		X
	Connection Size/Type:	1/2 Inch / GHT				
	Pressure:	Min. 40 Max. 60 psig				
	Peak Consumption:	3.6 gal/min				
	*Consumption per Load:	Min: 0.8 gal Max: 27.8 gal				
DI (OPTIONAL)	Utility:	Deionized Water	Optional DI Rinse Connection - Maximum consumption per load based on 5 minute rinse cycle at maximum flow rate.	Flex		X
	Connection Size/Type:	1/2 Inch / MNPT				
	Pressure (Minimum):	Min. 20 Max. 60 psig				
	Operating Consumption:	Min. 0.0 Max. 7.4 gal/min				
	*Consumption per Load:	Min. 0.0 Max. 37 gal				
EL	Utility:	Electric	Service disconnect provided by others per local code.	Hard Wired	X	
	Connection:	Hard Wire within junction box				
	Voltage (Phase):	1 Phase				
	Voltage (Nominal):	120/208 VAC				
	Circuit Protection:	40 Amps				
	Peak Consumption:	29 Amps				
	Power Consumption per Load:	Min. 1.4 Max 1.7 kW-h				

## ESTIMATED EMISSIONS

DR	Utility:	Open Drain	Provide floor/sink and trap, to accommodate maximum discharge rate. Optional Drain pump assembly with 1/2" GHT connection for areas with wall drain location or floor drain located greater than 12 feet from unit.	1-1/2" Copper Pipe	X	
	Connection Size/Type:	1 1/2 Inch / Indirect Drain				
	Discharge Flow Rate:	20.8 gal/min				
	Medium:	Noise Radiation				
	Maximum Radiation (Net):	80 dBA				

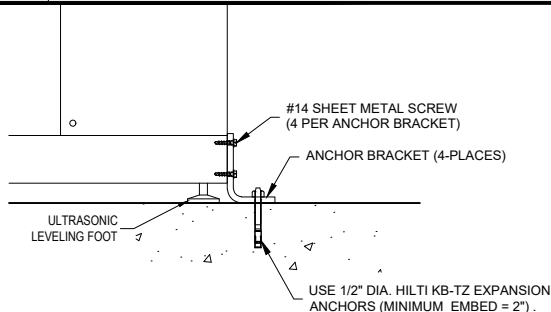
## PHYSICAL SPECIFICATIONS

	Parameter:	Carry-In Dimensions	Machine alone (i.e. removed from packaging)
	Height:	53.5 Inch	
	Width:	64 Inch	
	Length:	28.5 Inch	
	Parameter:	Weights	Transport Weight = Machine + Crating
	Transport Weight:	700 lbs	
	Operating Weight:	745 lbs	
	OSHPD Number:	OPM-0219-13	Operational Wt = Machine + Tray + Water + Instruments

\* Values are for an "Instruments - Normal Cycle". Values will vary with load size, utility inputs, and cycle setup.

Additional Information:  
GHT = Garden Hose Thread  
MNPT = Male Pipe Thread  
All utility supplies and connections are to be provided by others, per local code.

TS-422HL\_RevK



TYPICAL SEISMIC ANCHORING (N.T.S.)

**NOTE:** OPTIONAL DRAIN PUMP ASSEMBLY AVAILABLE FOR AREAS WITH WALL DRAIN LOCATION OR FLOOR DRAIN LOCATED GREATER THAN 12' FROM UNIT. DISCHARGE RATE OF 13.3-14.0 GAL/MIN. CONNECTION SIZE 1/2" GHT.

# Belimed

Infection Control

1535 Hobby Street, Charleston, SC 29405  
Tel: (800) 457-4117 Web: www.belimed.com

# 422HL

ULTRASONIC CLEANER (WASH/RINSE/DRY)

TECHNICAL SPECIFICATIONS  
Typical installation of a 422HL ultrasonic cleaner.

Dwg. No. :	CUT-422HL	Rev. :	G
Drawn By :	A. JONES	Date :	1/22/18
Scale :	NONE	Page :	3 of 3