

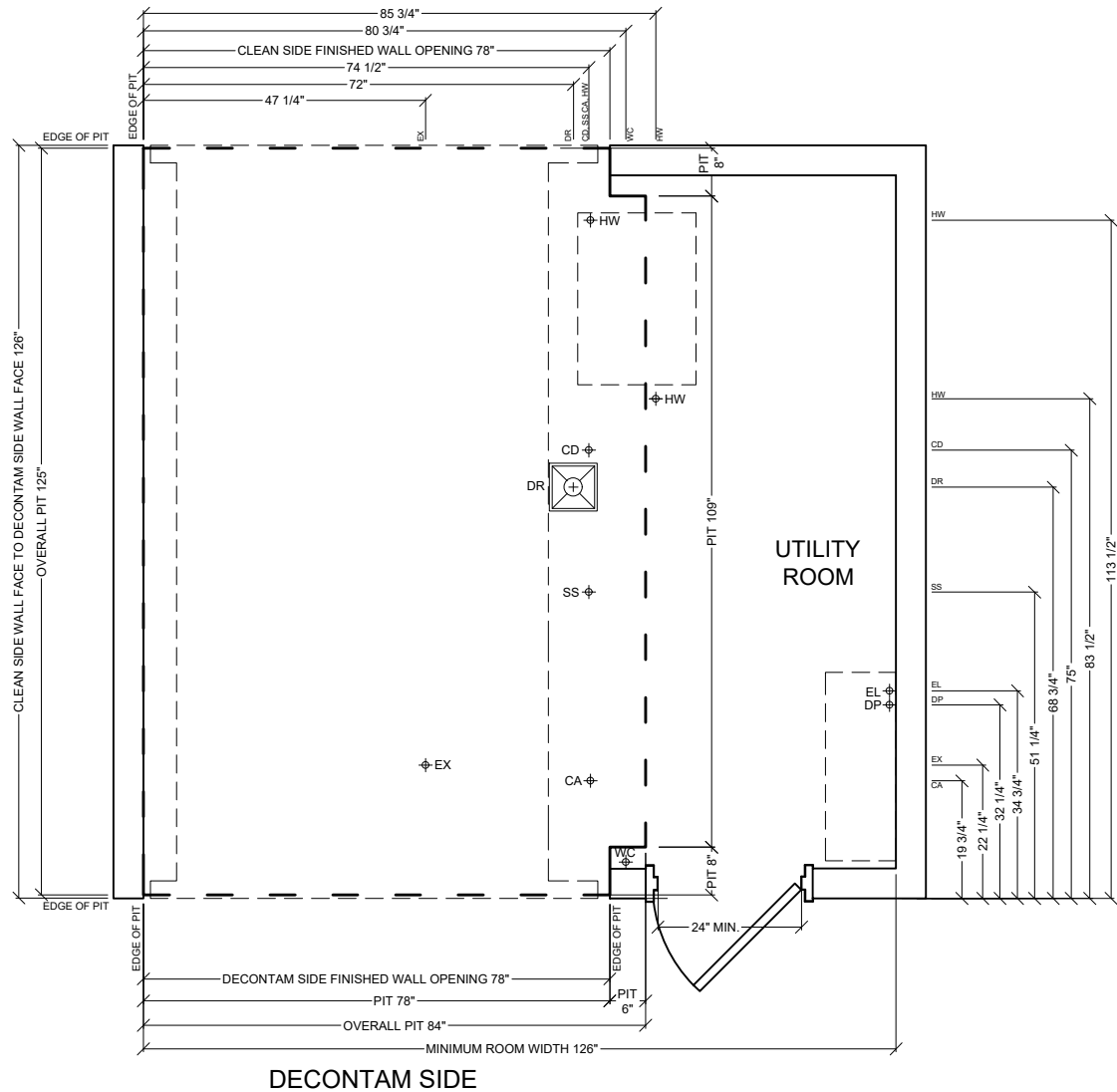
Belimed

Infection Control

1535 Hobby Street, Charleston, SC 29405
Tel: (800) 457-4117 Web: www.belimed.com

<p>CS-750M LEFT CHAMBER STEAM HEATED CART WASHER</p>			
3D VIEW		Dwg. No. : CUT-CS750M_LC	Rev. : D
TYPICAL INSTALLATION OF A LEFT CHAMBER CS-750M CART WASHER.		Drawn By : A. JONES	Date : 08/22/18
		Scale : N.T.S.	Page : 1 of 10

CLEAN SIDE



- HW — HOT WATER
- SS — STEAM
- CD — CONDENSATE
- CA — COMPRESSED AIR
- EL — ELECTRICITY FOR MACHINE
- DR — FLOOR DRAIN
- EX — AIR EXHAUST
- WC — WATER HOSE CONNECTION
- DP — DATA PORT

LEGEND

LINE TYPES

- — — — — EQUIPMENT OUTLINE
- - - - - PIT OUTLINE (5.5\"

Belimed
Infection Control

1535 Hobby Street, Charleston, SC 29405
Tel: (800) 457-4117 Web: www.belimed.com

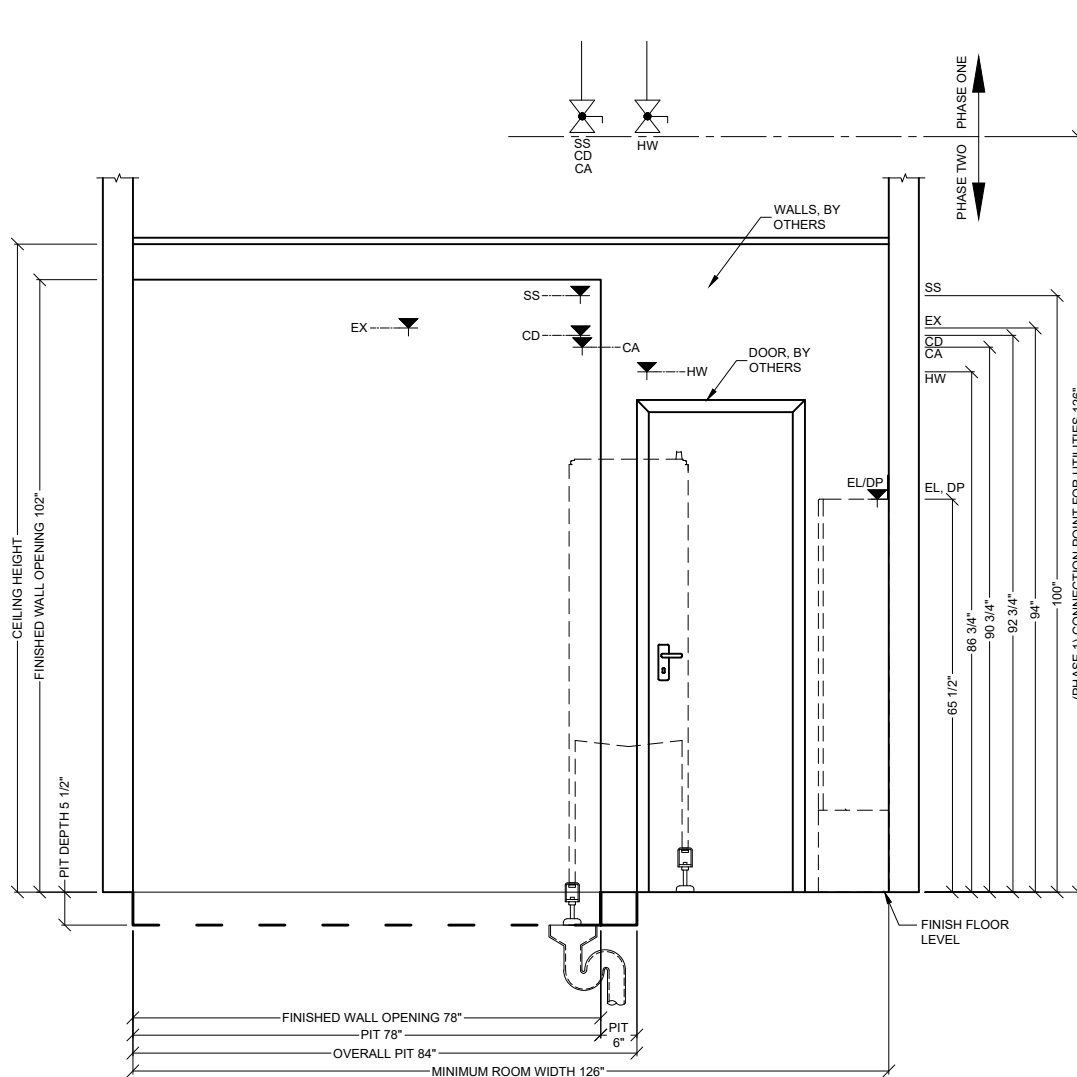
CS-750M

LEFT CHAMBER STEAM HEATED CART WASHER

PLAN VIEW

TYPICAL SITE PREPARATION OF A
LEFT CHAMBER CS-750M CART
WASHER.

Dwg. No. :	CUT-CS750M_LC	Rev. :	D
Drawn By :	A. JONES	Date :	08/22/18
Scale :	3/8" = 1'-0"	Page :	2 of 10



PHASE 1 CONNECTION POINT FOR UTILITIES ARE TO BE PROVIDED BY OTHERS **BEFORE** EQUIPMENT INSTALLATION BEGINS. PROVIDE SHUT-OFF VALVES AT PHASE 1 CONNECTION POINTS FOR HW, SS, CA, AND CD.

PHASE 2 CONNECTION POINTS FOR UTILITIES ARE TO BE PROVIDED BY OTHERS **AFTER** EQUIPMENT HAS BEEN SET IN FINAL POSITION BY BELIMED. ALL FINAL CONNECTIONS (FROM PHASE 1 CONNECTION POINTS TO FINAL CONNECTION POINTS, PHASE 2) ARE BY OTHERS.

HW — HOT WATER
 SS — STEAM
 CD — CONDENSATE
 CA — COMPRESSED AIR
 EL — ELECTRICITY FOR MACHINE
 DR — FLOOR DRAIN
 EX — AIR EXHAUST
 DP — DATA PORT

LEGEND

SYMBOLS

— SERVICE SHUT-OFF VALVE, BY OTHERS
 — FINAL CONNECTION POINT BY OTHERS.

LINE TYPES

— — — — — PIT OUTLINE (5.5" DEPTH)

Belimed
 Infection Control

1535 Hobby Street, Charleston, SC 29405
 Tel: (800) 457-4117 Web: www.belimed.com

CS-750M

LEFT CHAMBER STEAM HEATED CART WASHER

DECONTAM ELEVATION

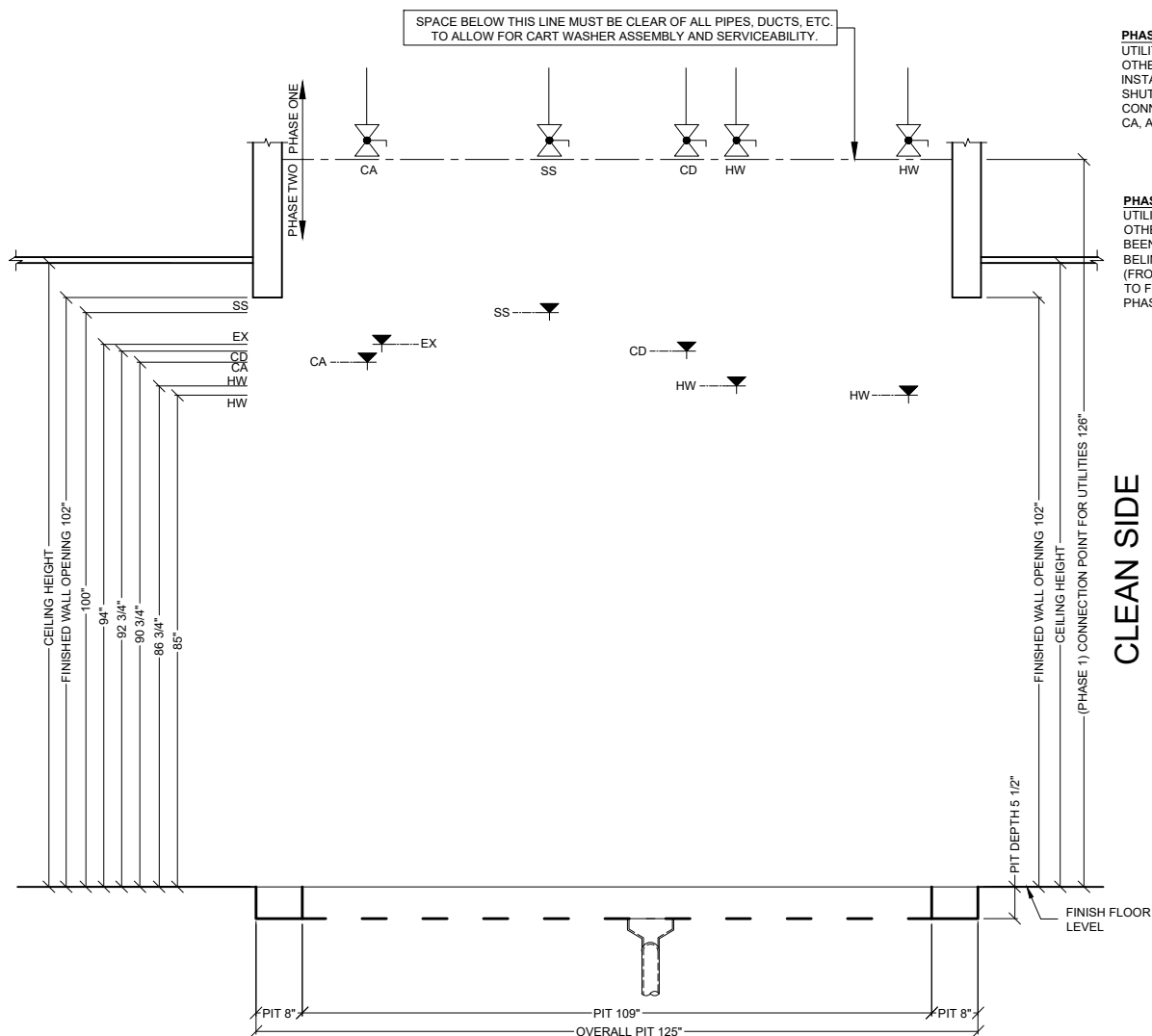
TYPICAL SITE PREPARATION OF A
 LEFT CHAMBER CS-750M CART
 WASHER.

Dwg. No. : CUT-CS750M_LC Rev. : D

Drawn By : A. JONES Date : 08/22/18

Scale : 3/8" = 1'-0" Page : 3 of 10

DECONTAM SIDE



PHASE 1 CONNECTION POINT FOR UTILITIES ARE TO BE PROVIDED BY OTHERS **BEFORE** EQUIPMENT INSTALLATION BEGINS. PROVIDE SHUT-OFF VALVES AT PHASE 1 CONNECTION POINTS FOR HW, SS, CA, AND CD.

PHASE 2 CONNECTION POINTS FOR UTILITIES ARE TO BE PROVIDED BY OTHERS **AFTER** EQUIPMENT HAS BEEN SET IN FINAL POSITION BY BELIMED. ALL FINAL CONNECTIONS (FROM PHASE 1 CONNECTION POINTS TO FINAL CONNECTION POINTS, PHASE 2) ARE BY OTHERS.

CLEAN SIDE

HW — HOT WATER
 SS — STEAM
 CD — CONDENSATE
 CA — COMPRESSED AIR
 EL — ELECTRICITY FOR MACHINE
 DR — FLOOR DRAIN
 EX — AIR EXHAUST

LEGEND

SYMBOLS

— SERVICE SHUT-OFF VALVE, BY OTHERS

— FINAL CONNECTION POINT BY OTHERS.

LINE TYPES

— PIT OUTLINE (5.5" DEPTH)

Belimed
 Infection Control

1535 Hobby Street, Charleston, SC 29405
 Tel: (800) 457-4117 Web: www.belimed.com

CS-750M

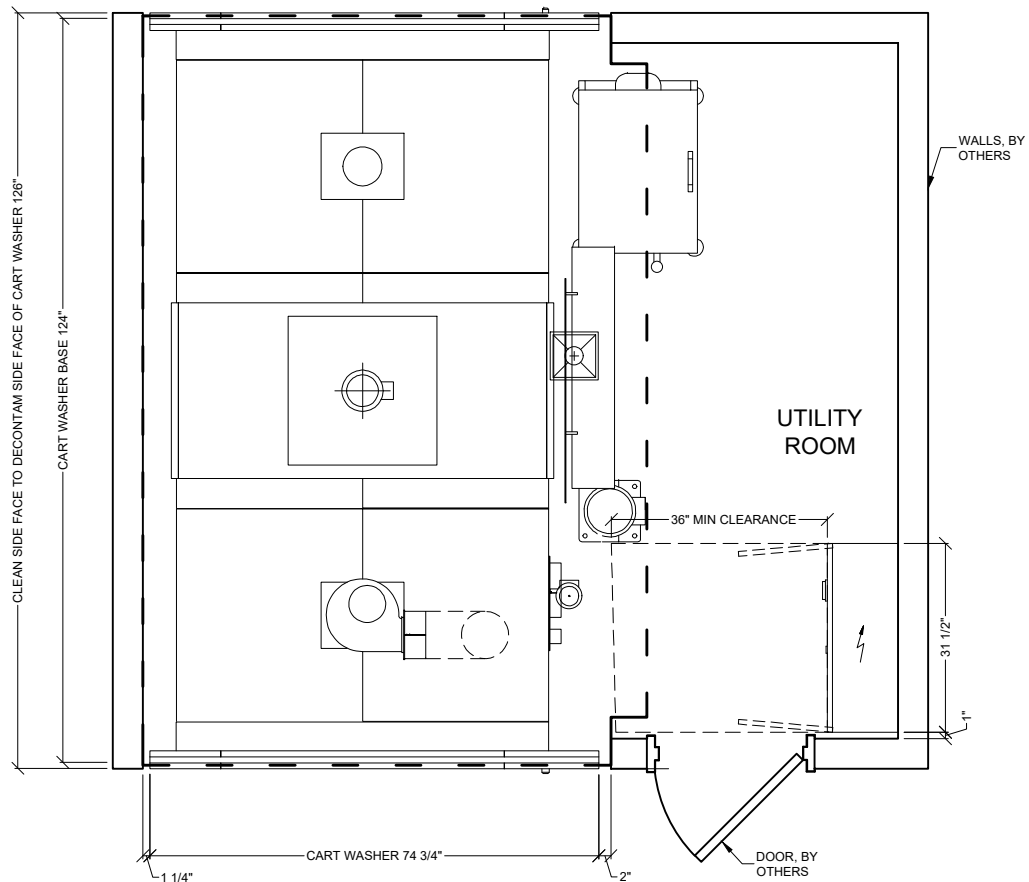
LEFT CHAMBER STEAM HEATED CART WASHER

SIDE ELEVATION

TYPICAL SITE PREPARATION OF A LEFT CHAMBER CS-750M CART WASHER.

Dwg. No. :	CUT-CS750M_LC	Rev. :	D
Drawn By :	A. JONES	Date :	08/22/18
Scale :	3/8" = 1'-0"	Page :	4 of 10

CLEAN SIDE



DECONTAM SIDE

LEGEND

LINE TYPES

- - - - - PIT OUTLINE (5.5" DEPTH)

Belimed
Infection Control

1535 Hobby Street, Charleston, SC 29405
Tel: (800) 457-4117 Web: www.belimed.com

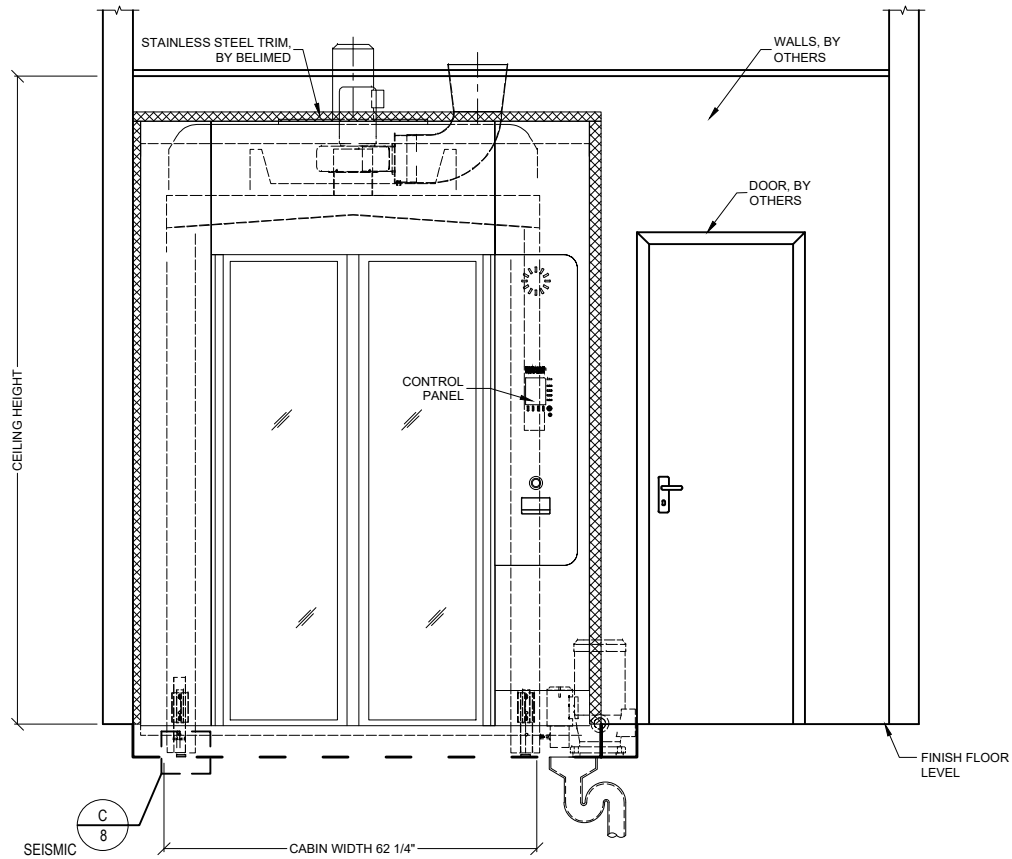
CS-750M

LEFT CHAMBER STEAM HEATED CART WASHER

PLAN VIEW

TYPICAL EQUIPMENT LAYOUT OF A
LEFT CHAMBER CS-750M CART
WASHER.

Dwg. No. :	CUT-CS750M_LC	Rev. :	D
Drawn By :	A. JONES	Date :	08/22/18
Scale :	3/8" = 1'-0"	Page :	5 of 10




LEGEND

LINE TYPES

--- PIT OUTLINE (5.5" DEPTH)

HATCH TYPES

 STAINLESS STEEL TRIM, BY BELIMED

Belimed
Infection Control

1535 Hobby Street, Charleston, SC 29405
Tel: (800) 457-4117 Web: www.belimed.com

CS-750M

LEFT CHAMBER STEAM HEATED CART WASHER

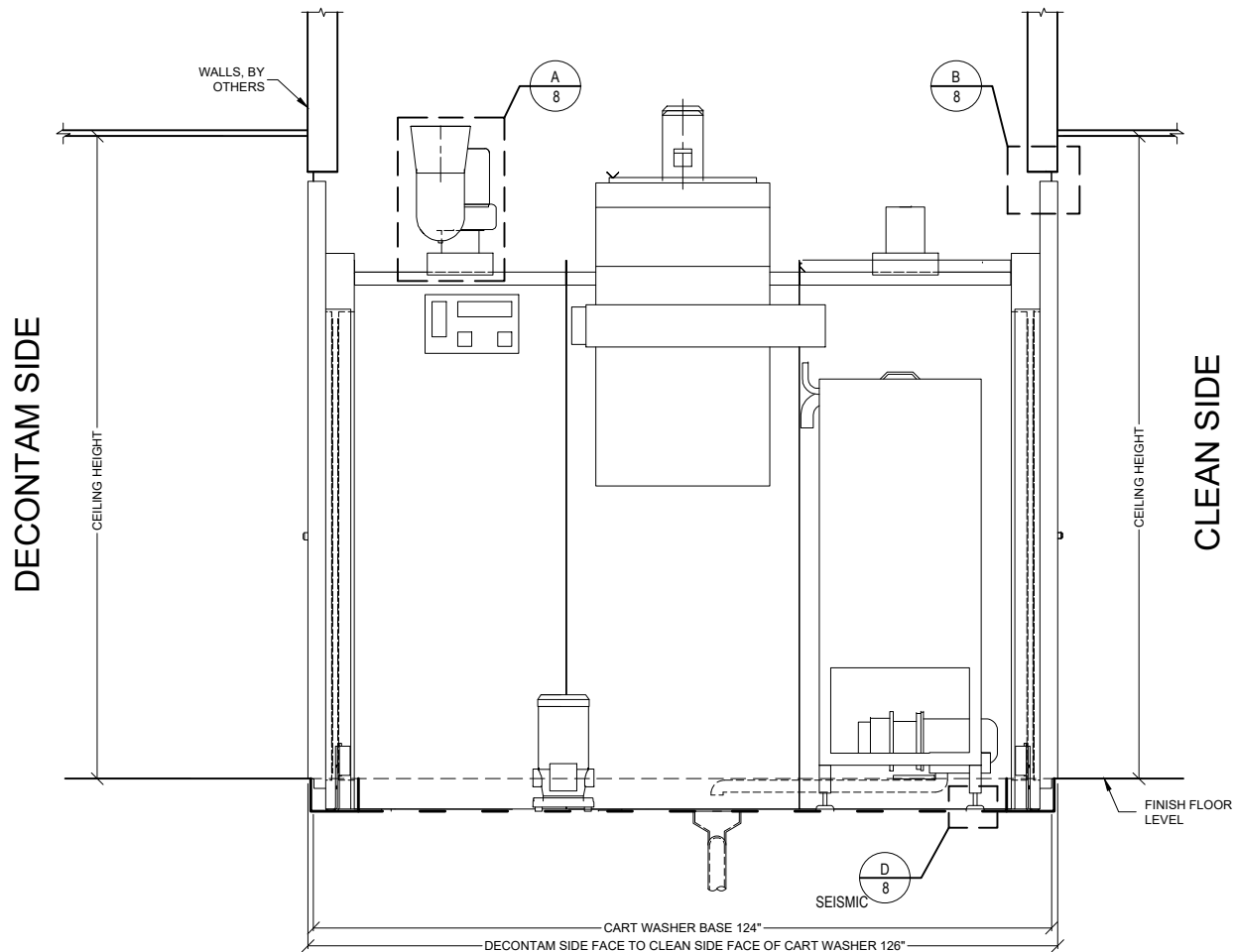
DECONTAM ELEVATION

TYPICAL EQUIPMENT LAYOUT OF A
LEFT CHAMBER CS-750M CART
WASHER.

Dwg. No.: CUT-CS750M_LC Rev.: D

Drawn By: A. JONES Date: 08/22/18

Scale: 3/8" = 1'-0" Page: 6 of 10



LEGEND

LINE TYPES

- - - - - PIT OUTLINE (5.5" DEPTH)

Belimed
Infection Control

1535 Hobby Street, Charleston, SC 29405
Tel: (800) 457-4117 Web: www.belimed.com

CS-750M

LEFT CHAMBER STEAM HEATED CART WASHER

SIDE ELEVATION

TYPICAL EQUIPMENT LAYOUT OF A
LEFT CHAMBER CS-750M CART
WASHER.

Dwg. No. : CUT-CS750M_LC

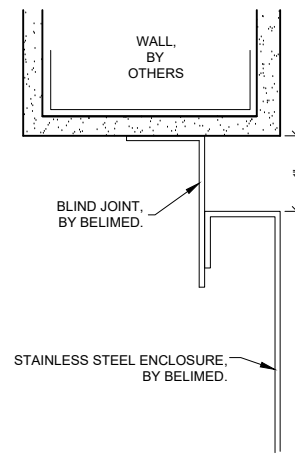
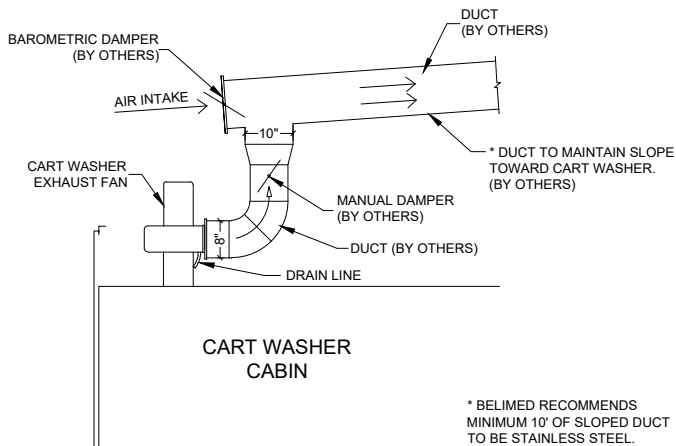
Rev. : D

Drawn By : A. JONES

Date : 08/22/18

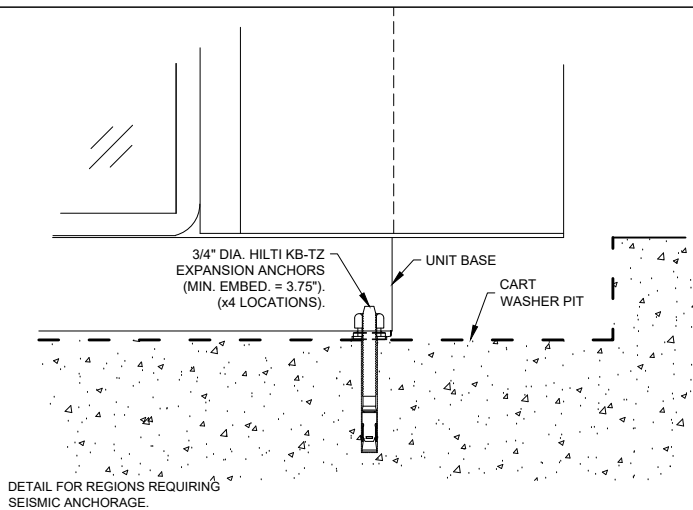
Scale : 3/8" = 1'-0"

Page : 7 of 10

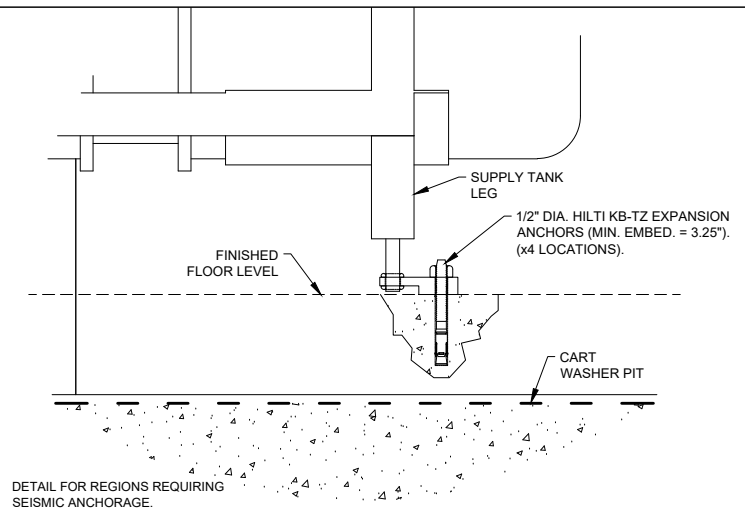


A TYP. EXHAUST DETAIL
CART WASHER
N.T.S.

B TYP. TRIM ATTACHMENT DETAIL
HEAD/JAMB - CART WASHER
N.T.S.



C TYP. SEISMIC ANCHORING DETAIL
CART WASHER CABIN
N.T.S.



D TYP. SEISMIC ANCHORING DETAIL
CART WASHER SUPPLY TANK
N.T.S.

CART WASHER MODEL CS-750M - TECHNICAL SPECIFICATIONS

REQUIRED INPUTS

Ref:	Description	Value	Utility Notes	Connection Method	Final Utility Conn. By:	
					Others	Belimed
SS	Utility:	Steam Supply	Steam must be dry, saturated, free from all impurities such as gases, oil, dirt, or other contaminants. Provide steam strainer with #100 mesh size. All steam drops must be piped from top of steam supply line.	Hard Pipe	X	
	Connection Size/Type:	1-1/2 Inch / MNPT				
	Pressure:	Min: 40 Max: 70 psig				
	Peak Consumption:	10.5 lbs/min				
	*Consumption per Load:	21 lbs				
HW	Utility:	Hot Water	Water hardness as CaCO ₃ must be less than 60 ppm. Water temperature is recommended to be a minimum of 110°F. (Colder HW temperature will result in longer cycles and higher steam consumption)	Flex Hose		X
	Connection Size/Type:	3/4 inch / MNPT				
	Pressure:	Min: 30 Max: 70 psig				
	Peak Consumption:	8 gal/min				
	*Consumption per Load:	8 gal				
EL	Utility:	Electric	208V, 3 phase, 3 wire, 50A. Service Disconnect to be provided by others, per local code.	Hard Wire - Conduit	X	
	Connection Type:	Hard wire within junction box				
	Voltage (Phase):	3 Phase				
	Voltage (Nominal):	208 VAC				
	Voltage (Frequency):	60 Hz				
	Circuit Protection:	50 Amps				
	Peak Consumption:	31.4 Amps				
	*Consumption per Load:	0.35 kW-h				
CA	Utility:	Compressed Air	Air must be dry and oil free. CA is used for pneumatic controls.	Flex Hose		X
	Connection Size/Type:	1/2 Inch / MNPT				
	Pressure:	Min: 90 Max: 115 psig				
	Peak Consumption:	1.0 CFM				
	*Consumption per Load:	3.0 CF				
WC	Utility:	Water Hose Connection	Provide standard garden hose connection for cleaning of supply tank.			
DP	Utility:	Data Port	Location: Ethernet port should be located within 5 ft of machine within the enclosed service area of the cart washer. * (By others)		X	
	Connection Method:	TCP/IP Ethernet to hospital network				
	Connection Quantity:	One (1) RJ45 Ethernet port per cart washer				
	Facility Wiring:	*Cat-5, Cat-6 or Cat-6e wire				
	NIC/Com Speed:	10/100 Mbps Networking Port (RJ45)				
	Broadcast Method:	Unicast				
	MTU Size:	1500				
	Final Connection:	Belimed provided patch cables for final connection				
	Port IP Setup:	Each RJ45 Ethernet Port with individual static IP address			X	

ESTIMATED EMISSIONS

CD	Utility:	Condensate	Condensate removal by customer per local code.	Hard Pipe	X	
	Connection Size/Type:	1 Inch / MNPT				
DR	Utility:	Open Drain	Provide floor sink/drain and trap.	2" copper pipe	X	
	Drain Size:	2 Inch				
	Discharge Flow Rate:	24 gal/min				
	Connection Type:	Floor Sink				
EX	Medium:	Air Exhaust	Discharged air is at 100% humidity, others must provide proper drainage upstream as needed. Others to provide manual damper at each exhaust connection point. Duct materials (in order of recommended use): stainless steel, galvanized steel, polyethylene, or aluminum.	Sheet Metal	X	
	Connection Size:	8 Inch OD				
	Peak Flow Rate:	530 CFM				
	Minimum Duct Diameter:	10 Inch				
	Medium:	Heat Radiation	Equipment room heat radiation will vary due to steam pipe insulation by others.			
	Load side heat radiation:	500 W				
	Unload side heat radiation:	500 W				
	Equipment room radiation:	1250 W				
	Total radiation:	2250 W				
	Medium:	Noise Radiation				
	Maximum Radiation (Net):	68 dBA				

CONTINUED ON PAGE 10

Belimed

Infection Control

1535 Hobby Street, Charleston, SC 29405
Tel: (800) 457-4117 Web: www.belimed.com

CS-750M

LEFT CHAMBER STEAM HEATED CART WASHER

TECHNICAL SPECIFICATIONS

TECHNICAL DATA FOR THE
INSTALLATION OF A LEFT CHAMBER
CS-750M CART WASHER.

Dwg. No. : CUT-CS750M_LC Rev. : D

Drawn By : A. JONES Date : 08/22/18

Scale : NONE Page : 9 of 10

PHYSICAL SPECIFICATIONS

	Parameter:	Carry-In Dimensions	Largest item is the pan carried in on its side, second largest item is the doors.
	Height:	63 in	
	Width:	6 in	
	Length:	111 in	
	Parameter:	Weights	
	Operating Weight:	5800 lbs	
	OSHDP NUMBER:	OPM-0242-13	

Values are for a Normal Cycle.

Additional Information:

MNPT = Male Pipe Thread
Others must provide service valves for steam, compressed air and water supply.
Others must provide back flow prevention for water supply.
For alternate utility connections, please contact Belimed.
All utility supplies and connections are to be provided by others, per local code.
Belimed recommends for others to apply a liquid waterproof membrane to pit or area under cart washer.

TS-CS-750M_RevH

Belimed
Infection Control

1535 Hobby Street, Charleston, SC 29405
Tel: (800) 457-4117 Web: www.belimed.com

CS-750M

LEFT CHAMBER STEAM HEATED CART WASHER

TECHNICAL SPECIFICATIONS CONT

TECHNICAL DATA FOR THE
INSTALLATION OF A LEFT CHAMBER
CS-750M CART WASHER.

Dwg. No. :	CUT-CS750M_LC	Rev. :	D
Drawn By :	A. JONES	Date :	08/22/18
Scale :	NONE	Page :	10 of 10