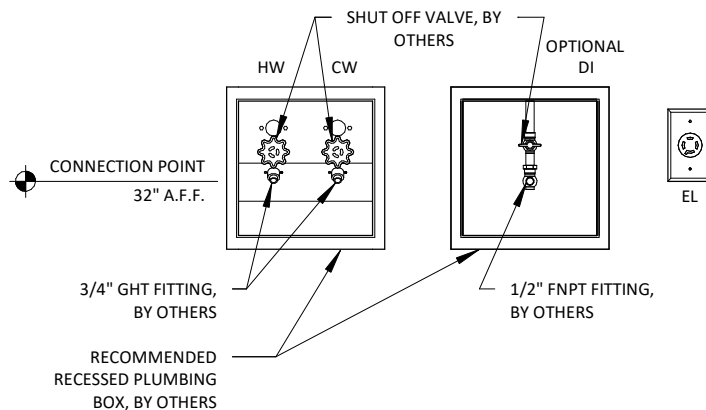
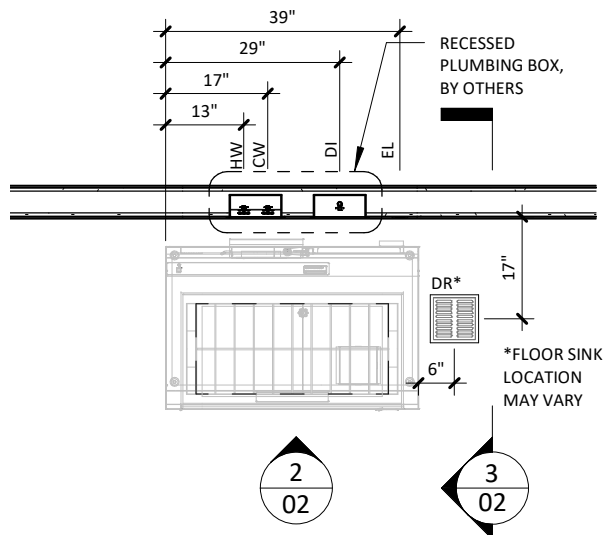


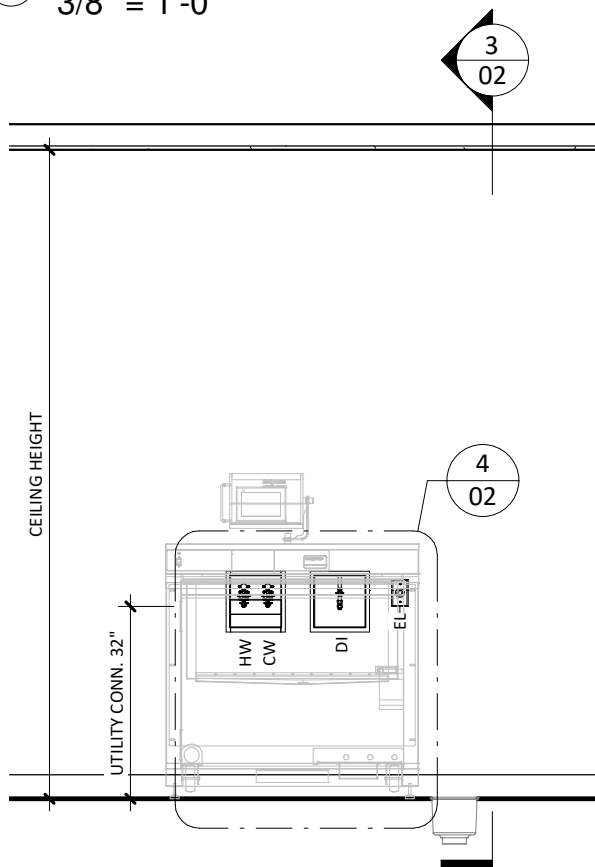
UTILITY FLEX HOSES TO UNIT, BY BELIMED



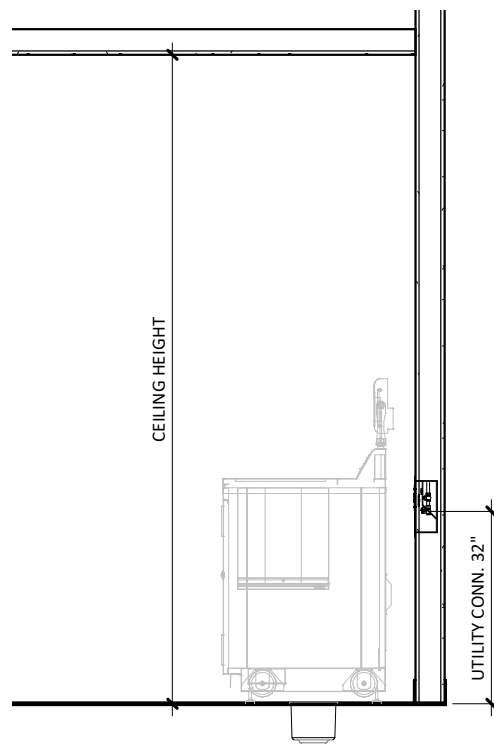
1. REFER TO EQUIPMENT, PLUMBING, MECHANICAL AND ELECTRICAL PLANS FOR UTILITY LOCATIONS.
2. SEE TECHNICAL SPECIFICATIONS FOR UTILITY SIZING, INPUT REQUIREMENTS AND FINAL CONNECTIONS.

565 PLUS/565 PLUS3 TYPICAL UTILITY LAYOUT

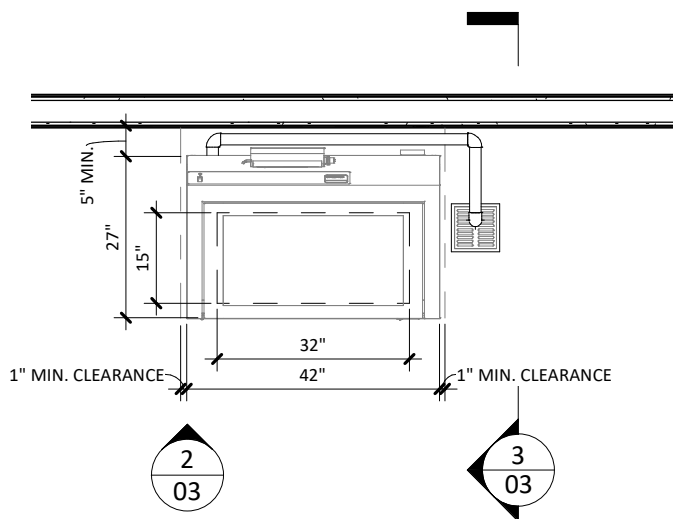
1 UTILITY LAYOUT 3/8" = 1'-0"



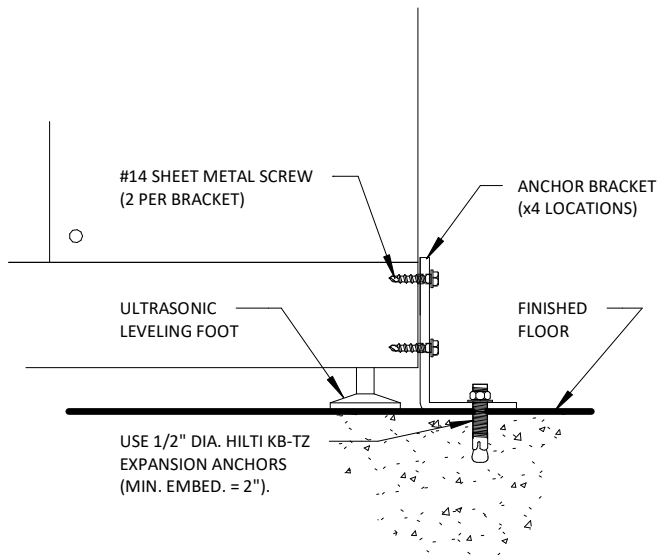
2 UTILITY FRONT ELEVATION 3/8" = 1'-0"



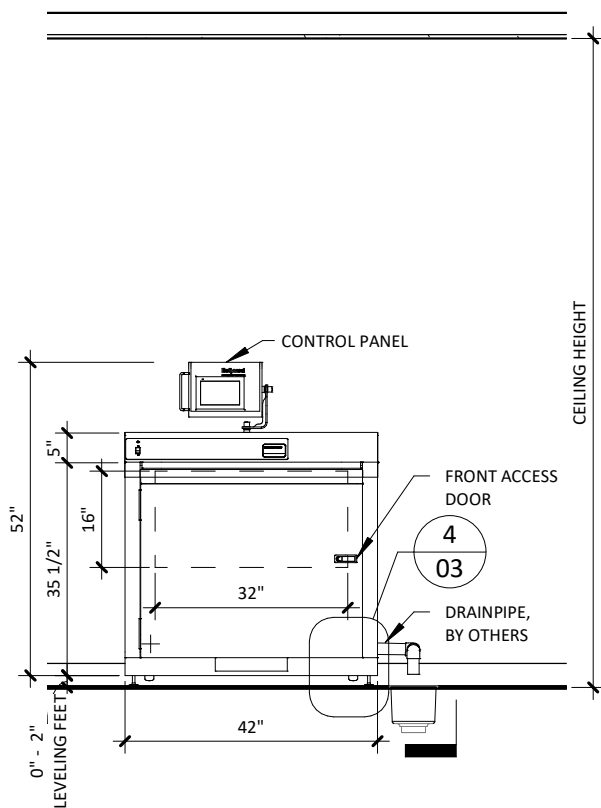
3 UTILITY SIDE ELEVATION 3/8" = 1'-0"



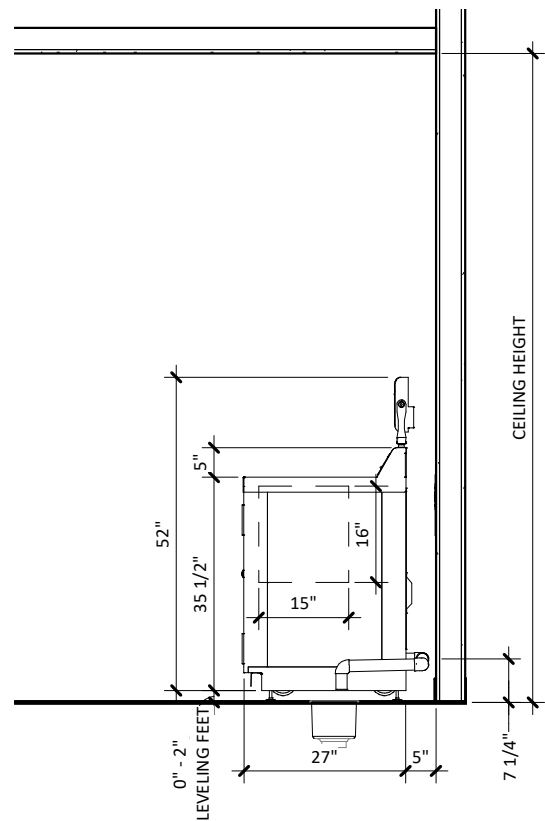
1 EQUIPMENT PLACEMENT PLAN
3/8" = 1'-0"



4 SEISMIC ANCHORING DETAIL
1 1/2" = 1'-0"



2 EQUIPMENT FRONT ELEVATION
3/8" = 1'-0"



3 EQUIPMENT SIDE ELEVATION
3/8" = 1'-0"

565 PLUS ULTRASONIC CLEANER - TECHNICAL SPECIFICATIONS

REQUIRED INPUTS

Symbol	Description	Value		Utility Notes	Connection Method	Final Utility Conn. By:	
						Others	Belimed
HW	Utility:	Hot Water		Max. consumption per load based on 5 minute rinse cycle at max. flow rate. Conductivity (µS/cm) < 500 pH 5 – 8 Chlorides (mg/L) < 10	Flex		X
	Connection Size/Type:	3/4" GHT					
	Water Temperature:	Min: 100°F	Max: 140°F				
	Water Hardness:	Min: 25 ppm	Max: 85 ppm				
	Pressure:	Min: 30.0 psig	Max: 60.0 psig				
	Minimum Flow Rate:	7.0 gpm					
*Consumption per Load:	Min: 13.1 gal	Max: 47.2 gal					
CW	Utility:	Cold Water		Conductivity (µS/cm) < 500 pH 5 – 8 Chlorides (mg/L) < 10	Flex		X
	Connection Size/Type:	3/4" GHT					
	Water Temperature:	Min: 40°F	Max: 68°F				
	Water Hardness:	Min: 70 ppm	Max: 170 ppm				
	Pressure:	Min: 40.0 psig	Max: 60.0 psig				
	Minimum Flow Rate:	5.0 gpm					
*Consumption per Load:	Min: 1.0 gal	Max: 1.0 gal					
DI	Utility:	Deionized Water		DI Rinse Connection - Maximum consumption per load based on 2 minute rinse cycle at maximum flow rate.	Flex		X
	Connection Size/Type:	1/2 Inch / FNPT					
	Pressure:	Min: 30.0 psig	Max: 60.0 psig				
	Minimum Flow Rate:	10.0 gpm					
*Consumption per Load:	Min: 0.0 gal	Max: 14.0 gal					
EL	Utility:	Electric		Junction Box with Receptacle NEMA L14-20R to NEC local codes	Receptacle		X
	Connection Type:	Receptacle					
	Voltage (Phase):	1 Phase					
	Voltage (Nominal):	208 VAC (4 Wire)					
	Circuit Protection:	20 Amps					
	Peak Consumption:	14 Amps					
*Consumption per Load:	Min: 0.6 kW-h	Max: 0.7 kW-h					

ESTIMATED EMISSIONS

DR	Utility:	Open Drain	Provide flush mounted floor sink and trap per local code.	1 1/2" Copper Pipe	X	
	Connection Size/Type:	1 1/2 Inch / Indirect Drain				
	Discharge Flow Rate:	21.0 gal/min				
	Max. Discharge Temp:	140°F				
	Medium:	Noise Radiation				
	Max. Radiation (Net):	80 dBA				

PHYSICAL SPECIFICATIONS

	Parameter:	Carry-In Dimensions*	Usable Chamber Dimensions	*Machine alone (i.e. removed from packaging) Loading height at 36 Inch.
	Height:	54.5 Inch	16 Inch	
	Width:	42 Inch	32 Inch	
	Length:	27 Inch	15 Inch	
	Parameter:	Weights		
	Transport Weight:	550 lbs	Transport Weight = Machine + Crating	
	Operating Weight:	680 lbs	Operational Wt = Machine [400lbs unloaded] + Tray + Water + Instruments	
	OSHPD Number:	OPM-0219-13		

* Values are for an "Instruments - General Cycle". Values will vary with load size, utility inputs, and cycle setup.

Additional Information:

GHT = Garden Hose Thread

FNPT = Female National Pipe Thread

Output connection on mixing valve is 3/4" GHT, by others.

HW, CW, and DI lines have dual check valves on the incoming water valves to serve as backflow preventers.

Flex hose connections for HW, CW, and DI are supplied by Belimed.

All other utility supplies and connections are to be provided by others, per local code.

TS-565PLUS_RevC

565 PLUS ULTRASONIC CLEANER - TECHNICAL SPECIFICATIONS

REQUIRED INPUTS

Symbol	Description	Value		Utility Notes	Connection Method	Final Utility Conn. By:	
						Others	Belimed
HW	Utility:	Hot Water		Max. consumption per load based on 5 minute rinse cycle at max. flow rate.	Flex		X
	Connection Size/Type:	3/4" GHT					
	Water Temperature:	Min: 100°F	Max: 140°F	Conductivity (µS/cm) < 500 pH 5 – 8 Chlorides (mg/L) < 10			
	Water Hardness:	Min: 25 ppm	Max: 85 ppm				
	Pressure:	Min: 30.0 psig	Max: 60.0 psig				
	Minimum Flow Rate:	7.0 gpm					
*Consumption per Load:	Min: 13.1 gal	Max: 47.2 gal					
CW	Utility:	Cold Water			Flex		X
	Connection Size/Type:	3/4" GHT					
	Water Temperature:	Min: 40°F	Max: 68°F	Conductivity (µS/cm) < 500 pH 5 – 8 Chlorides (mg/L) < 10			
	Water Hardness:	Min: 70 ppm	Max: 170 ppm				
	Pressure:	Min: 40.0 psig	Max: 60.0 psig				
	Minimum Flow Rate:	5.0 gpm					
*Consumption per Load:	Min: 1.0 gal	Max: 1.0 gal					
DI	Utility:	Deionized Water		DI Rinse Connection - Maximum consumption per load based on 2 minute rinse cycle at maximum flow rate.	Flex		X
	Connection Size/Type:	1/2 Inch / FNPT					
	Pressure:	Min: 30.0 psig	Max: 60.0 psig				
	Minimum Flow Rate:	10.0 gpm					
	*Consumption per Load:	Min: 0.0 gal	Max: 14.0 gal				
EL	Utility:	Electric		Junction Box with Receptacle NEMA L14-20R to NEC local codes	Receptacle		X
	Connection Type:	Receptacle					
	Voltage (Phase):	1 Phase					
	Voltage (Nominal):	208 VAC (4 Wire)					
	Circuit Protection:	20 Amps					
	Peak Consumption:	14 Amps					
	*Consumption per Load:	Min: 0.6 kW-h	Max: 0.7 kW-h				

ESTIMATED EMISSIONS

DR	Utility:	Open Drain	Provide flush mounted floor sink and trap per local code.	1 1/2" Copper Pipe	X	
	Connection Size/Type:	1 1/2 Inch / Indirect Drain				
	Discharge Flow Rate:	21.0 gal/min				
	Max. Discharge Temp:	140°F				
	Medium:	Noise Radiation				
	Max. Radiation (Net):	80 dBA				

PHYSICAL SPECIFICATIONS

	Parameter:	Carry-In Dimensions*	Usable Chamber Dimensions	*Machine alone (i.e. removed from packaging) Loading height at 36 Inch.
	Height:	54.5 Inch	16 Inch	
	Width:	42 Inch	32 Inch	
	Length:	27 Inch	15 Inch	
	Parameter:	Weights		
	Transport Weight:	550 lbs	Transport Weight = Machine + Crating	
	Operating Weight:	680 lbs	Operational Wt = Machine [400lbs unloaded] + Tray + Water + Instruments	
	OSHPD Number:	OPM-0219-13		

* Values are for an "Instruments - General Cycle". Values will vary with load size, utility inputs, and cycle setup.

Additional Information:

GHT = Garden Hose Thread

FNPT = Female National Pipe Thread

Output connection on mixing valve is 3/4" GHT, by others.

HW, CW, and DI lines have dual check valves on the incoming water valves to serve as backflow preventers.

Flex hose connections for HW, CW, and DI are supplied by Belimed.

All other utility supplies and connections are to be provided by others, per local code.

TS-565PLUS_RevC

565 PLUS3 ULTRASONIC CLEANER - TECHNICAL SPECIFICATIONS

REQUIRED INPUTS

Symbol	Description	Value		Utility Notes	Connection Method	Final Utility Conn. By:	
						Others	Belimed
HW	Utility:	Hot Water		Max. consumption per load based on 5 minute rinse cycle at max. flow rate.	Flex		X
	Connection Size/Type:	3/4" GHT					
	Water Temperature:	Min: 100°F	Max: 140°F	Conductivity (µS/cm) < 500 pH 5 – 8 Chlorides (mg/L) < 10			
	Water Hardness:	Min: 25 ppm	Max: 85 ppm				
	Pressure:	Min: 30.0 psig	Max: 60.0 psig				
	Minimum Flow Rate:	7.0 gpm					
*Consumption per Load:	Min: 13.1 gal	Max: 47.2 gal					
CW	Utility:	Cold Water			Flex		X
	Connection Size/Type:	3/4" GHT					
	Water Temperature:	Min: 40°F	Max: 68°F	Conductivity (µS/cm) < 500 pH 5 – 8 Chlorides (mg/L) < 10			
	Water Hardness:	Min: 70 ppm	Max: 170 ppm				
	Pressure:	Min: 40.0 psig	Max: 60.0 psig				
	Minimum Flow Rate:	5.0 gpm					
*Consumption per Load:	Min: 1.0 gal	Max: 1.0 gal					
DI	Utility:	Deionized Water		DI Rinse Connection - Maximum consumption per load based on 2 minute rinse cycle at maximum flow rate.	Flex		X
	Connection Size/Type:	1/2 Inch / FNPT					
	Pressure:	Min: 30.0 psig	Max: 60.0 psig				
	Minimum Flow Rate:	10.0 gpm					
	*Consumption per Load:	Min: 0.0 gal	Max: 14.0 gal				
EL	Utility:	Electric		Junction Box with Receptacle NEMA L14-20R to NEC local codes	Receptacle		X
	Connection Type:	Receptacle					
	Voltage (Phase):	1 Phase					
	Voltage (Nominal):	208 VAC (4 Wire)					
	Circuit Protection:	20 Amps					
	Peak Consumption:	14 Amps					
*Consumption per Load:	0.75 kW-h						

ESTIMATED EMISSIONS

DR	Utility:	Open Drain	Provide flush mounted floor sink and trap per local code.	1 1/2" Copper Pipe	X	
	Connection Size/Type:	1 1/2 Inch / Indirect Drain				
	Discharge Flow Rate:	21.0 gal/min				
	Max. Discharge Temp:	140°F				
	Medium:	Noise Radiation				
	Max. Radiation (Net):	80 dBA				

PHYSICAL SPECIFICATIONS

	Parameter:	Carry-In Dimensions*	Usable Chamber Dimensions	*Machine alone (i.e. removed from packaging) Loading height at 36 Inch.
	Height:	54.5 Inch	16 Inch	
	Width:	42 Inch	32 Inch	
	Length:	27 Inch	15 Inch	
	Parameter:	Weights		
	Transport Weight:	550 lbs	Transport Weight = Machine + Crating	
	Operating Weight:	680 lbs	Operational Wt = Machine [400lbs unloaded] + Tray + Water + Instruments	
	OSHDP Number:	OPM-0219-13		

* Values are for an "Instruments - General Cycle". Values will vary with load size, utility inputs, and cycle setup.

Additional Information:

GHT = Garden Hose Thread

FNPT = Female National Pipe Thread

Output connection on mixing valve is 3/4" GHT, by others.

HW, CW, and DI lines have dual check valves on the incoming water valves to serve as backflow preventers.

Flex hose connections for HW, CW, and DI are supplied by Belimed.

All other utility supplies and connections are to be provided by others, per local code.

TS-565PLUS3_RevC

565 PLUS3 ULTRASONIC CLEANER - TECHNICAL SPECIFICATIONS

REQUIRED INPUTS

Symbol	Description	Value	Utility Notes	Connection Method	Final Utility Conn. By:	
					Others	Belimed
HW	Utility:	Hot Water	Max. consumption per load based on 5 minute rinse cycle at max. flow rate. Conductivity (µS/cm) < 500 pH 5 – 8 Chlorides (mg/L) < 10	Flex		X
	Connection Size/Type:	3/4" GHT				
	Water Temperature:	Min: 100°F Max: 140°F				
	Water Hardness:	Min: 25 ppm Max: 85 ppm				
	Pressure:	Min: 30.0 psig Max: 60.0 psig				
	Minimum Flow Rate:	7.0 gpm				
CW	*Consumption per Load:	Min: 13.1 gal Max: 47.2 gal	Conductivity (µS/cm) < 500 pH 5 – 8 Chlorides (mg/L) < 10	Flex		X
	Utility:	Cold Water				
	Connection Size/Type:	3/4" GHT				
	Water Temperature:	Min: 40°F Max: 68°F				
	Water Hardness:	Min: 70 ppm Max: 170 ppm				
	Pressure:	Min: 40.0 psig Max: 60.0 psig				
DI	Minimum Flow Rate:	5.0 gpm	DI Rinse Connection - Maximum consumption per load based on 2 minute rinse cycle at maximum flow rate.	Flex		X
	*Consumption per Load:	Min: 1.0 gal Max: 1.0 gal				
	Utility:	Deionized Water				
	Connection Size/Type:	1/2 Inch / FNPT				
EL	Pressure:	Min: 30.0 psig Max: 60.0 psig	Junction Box with Receptacle NEMA L14-20R to NEC local codes	Receptacle		X
	Minimum Flow Rate:	10.0 gpm				
	*Consumption per Load:	Min: 0.0 gal Max: 14.0 gal				
	Utility:	Electric				
	Connection Type:	Receptacle				
	Voltage (Phase):	1 Phase				
	Voltage (Nominal):	208 VAC (4 Wire)				
	Circuit Protection:	20 Amps				
	Peak Consumption:	14 Amps				
	*Consumption per Load:	0.75 kW-h				

ESTIMATED EMISSIONS

DR	Utility:	Wall Drain	Drain pump for areas with wall drain location or floor drain located greater than 12 feet from unit. Connection hose must be min. of 1/2" ID smooth bore hose.	1/2" Copper Pipe	X	
	Connection Size/Type:	1/2 Inch FNPT				
	Discharge Flow Rate:	13.3 - 14.0 gal/min (Variable)				
	Max. Discharge Temp:	140°F				
	Medium:	Noise Radiation				
	Max. Radiation (Net):	80 dBA				

PHYSICAL SPECIFICATIONS

	Parameter:	Carry-In Dimensions*	Usable Chamber Dimensions	* Machine alone (i.e. removed from packaging) Loading height at 36 Inch.
	Height:	54.5 Inch	16 Inch	
	Width:	42 Inch	32 Inch	
	Length:	27 Inch	15 Inch	
	Parameter:	Weights		
	Transport Weight:	550 lbs	Transport Weight = Machine + Crating	
	Operating Weight:	680 lbs	Operational Wt = Machine [400lbs unloaded] + Tray + Water + Instruments	
	OSHPD Number:	OPM-0219-13		

* Values are for an "Instruments - General Cycle". Values will vary with load size, utility inputs, and cycle setup.

Additional Information:

GHT = Garden Hose Thread

FNPT = Female National Pipe Thread

Output connection on mixing valve is 3/4" GHT, by others.

HW, CW, and DI lines have dual check valves on the incoming water valves to serve as backflow preventers.

Flex hose connections for HW, CW, and DI are supplied by Belimed.

All other utility supplies and connections are to be provided by others, per local code.

TS-565PLUS3_RevC