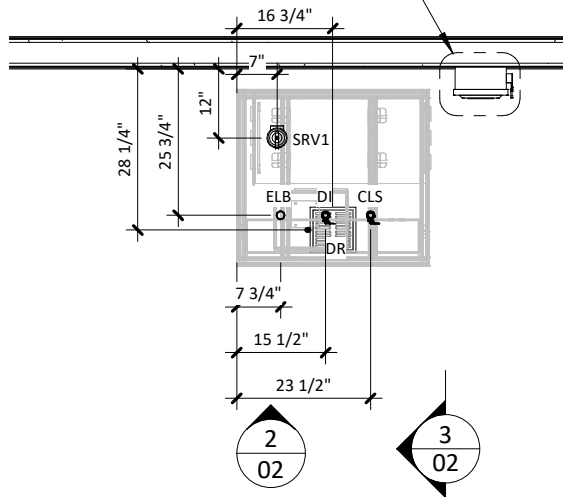
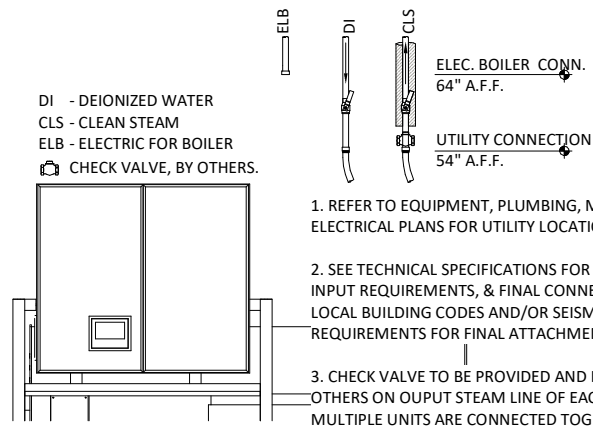


CONSULT BELIMED PRIOR TO INSTALLING SERVICE DISCONNECT IN FINAL LOCATION. SERVICE DISCONNECTS TO BE PROVIDED & INSTALLED BY OTHERS PER LOCAL CODE.

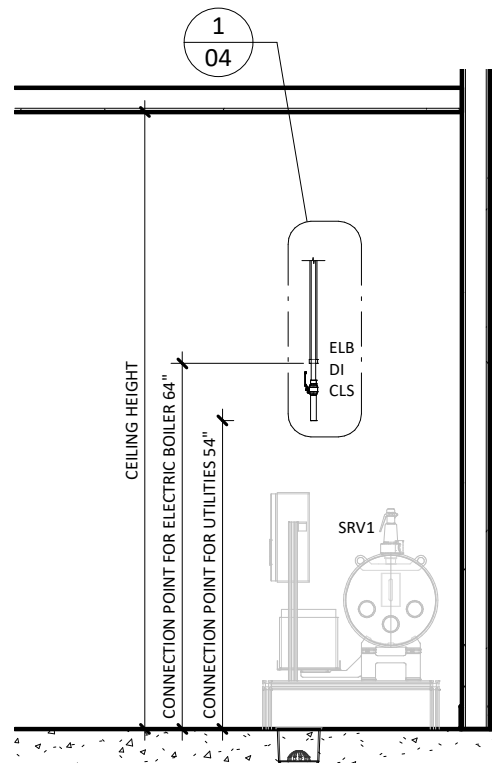
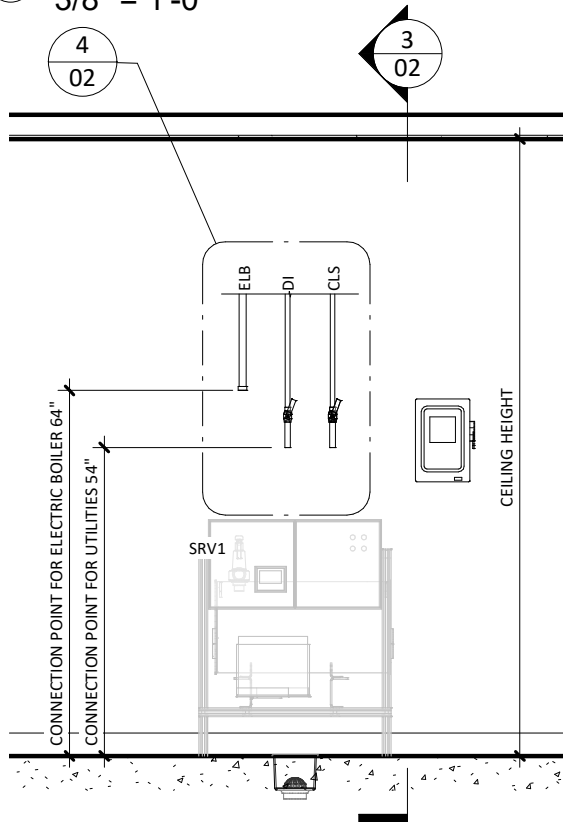


UTILITY ROUGH-IN BY OTHERS



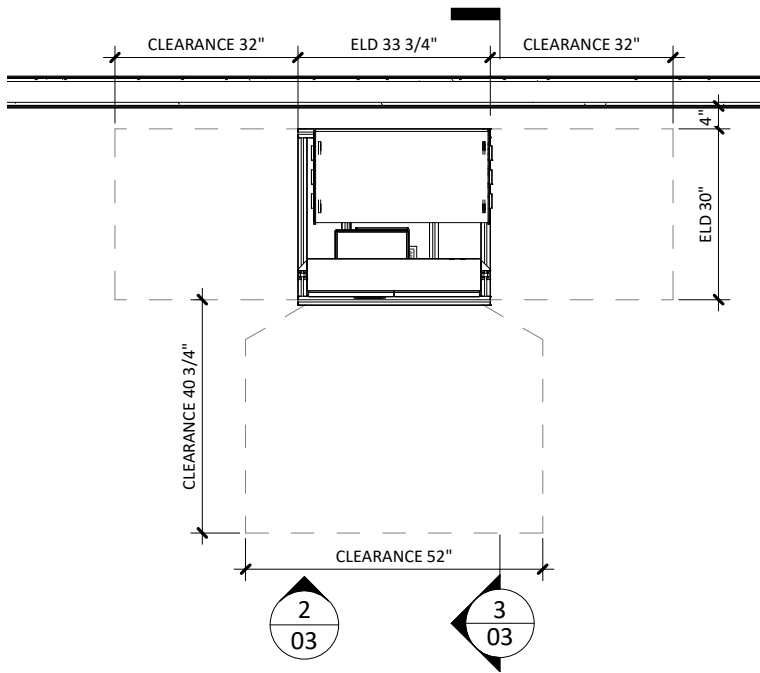
1 UTILITY LAYOUT
3/8" = 1'-0"

4 ELD ELECTRIC GENERATOR TYP.
UTILITY LAYOUT
1/2" = 1'-0"

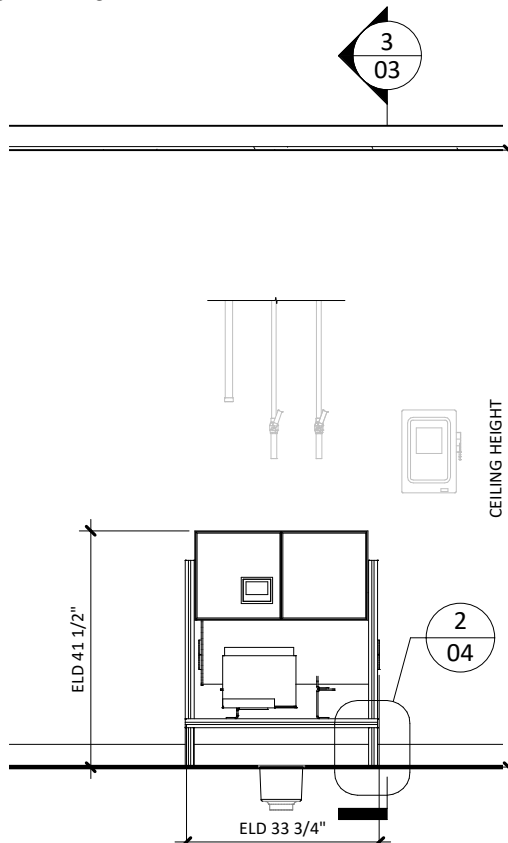


2 UTILITY FRONT ELEVATION
3/8" = 1'-0"

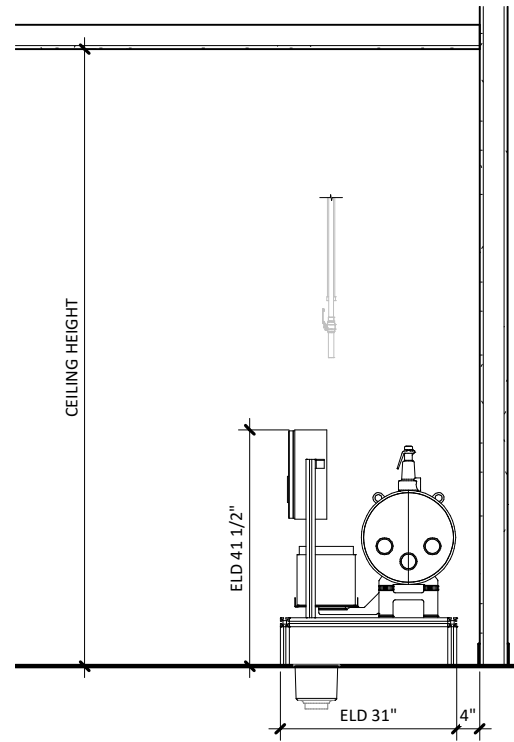
3 UTILITY SIDE ELEVATION
3/8" = 1'-0"



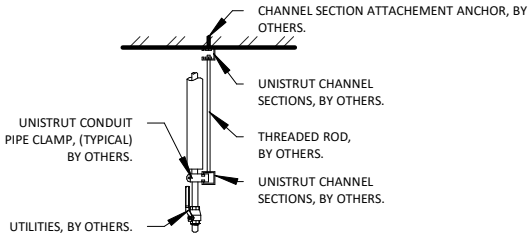
① EQUIPMENT PLACEMENT PLAN
3/8" = 1'-0"



② EQUIPMENT FRONT ELEVATION
3/8" = 1'-0"



③ EQUIPMENT SIDE ELEVATION
3/8" = 1'-0"

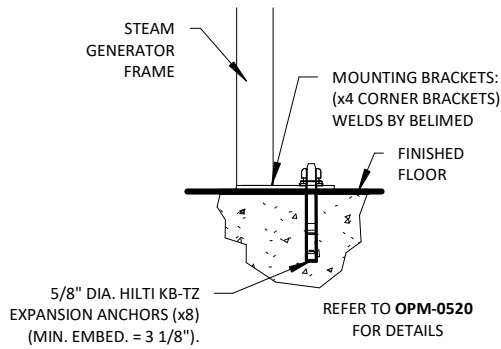


NOTE: REFER TO LOCAL BUILDING CODES AND/OR SEISMIC ANCHORAGE REQUIREMENTS FOR FINAL ATTACHMENT METHOD.

1. UTILITY ATTACHMENT ASSEMBLY SHALL FALL WITHIN THE FOOT PRINT OF THE SPECIFIED EQUIPMENT.
2. REFER TO EQUIPMENT PLUMBING, MECHANICAL AND ELECTRICAL PLANS FOR UTILITY LOCATIONS.
3. SEE TECHNICAL SPECIFICATIONS FOR UTILITY SIZING, INPUT REQUIREMENTS, AND FINAL CONNECTIONS.

1 TYP. UTILITY ATTACHMENT - CEILING

1/2" = 1'-0"



2 30 ELD SEISMIC ANCHORING DETAIL

1" = 1'-0"

ELD 30 ELECTRIC STEAM GENERATOR - TECHNICAL SPECIFICATIONS

REQUIRED INPUTS

Symbol	Description	Value	Utility Notes	Connection Method	Final Utility Conn. By:	
					Others	Belimed
TW	Utility:	Treated/Deionized Water		Treated/Deionized/RO water to produce clean steam. Minimum Water Quality Specifications: Conductivity (µS/cm) ≤ 5 pH < 5.0 - 7.5 Hardness (mmol/L) ≤ 0.02 Chlorides (ppm) ≤ 1	Flex	X
	Connection Size:	1/2 in				
	Building-Side Conn. Type:	FNPT				
	Pressure:	Min: 29.0 psig	Max: 72.5 psig			
	Operating Consumption:	1.8 gal/min				
Operating Temperature:	Min: 41.0°F	Max: 95.0°F				
EL	Utility:	Electric		Service disconnect provided by others per local code.	Hard Wire	X
	Connection Size:	3/4 in/ EMT				
	Voltage (Nominal):	480 VAC				
	Voltage (Phase):	3 Phase				
	Voltage (Frequency):	60 Hz				
	Circuit Protection:	50 Amps				
	Current (Nominal):	42 Amps				
Peak Consumption:	32.6 kW					

STEAM OUTPUT

CLS	Utility:	Clean Steam Supply	Provide stainless steel piping routed from heat exchanger to equipment. Others are responsible for proper steam pipe insulation. Stainless steel pipe is 1 1/4"Ø.	Hard Pipe	X	
	Connection Size:	1 1/4 in				
	Building-Side Conn. Type:	FNPT				
	Output Pressure:	Min: 44.2 psig Max: 50.0 psig				
	Capacity:	3.9 lbs/min				

ESTIMATED EMISSIONS

DR	Utility:	Open Drain	Provide drain pipe leading from heat exchanger to nearby drain. If there is no existing drain in the area, a new floor drain with trap must be provided.	3/4" Copper Pipe	X	
	Connection Size:	3/4 in				
	Building-Side Conn. Type:	FNPT				
	Discharge/Flow Rate:	2.9 gal/min				
	Connection Type:	Indirect Drain				
SRV1	Max. Discharge Temp.:	140°F	Provide connection to safety relief valve and pipe to drain, atmosphere, or as required by local code.	Hard Pipe w/ Union	X	
	Utility:	Safety Relief Valve				
	Connection Size:	3/4 in				
	Building-Side Conn. Type:	MNPT				
	Medium:	Heat Radiation				
	Radiation (Net):	0.8 kW				

PHYSICAL SPECIFICATIONS

	Parameter:	Carry-In Dimensions¹	Minimum Room Requirements	¹ Machine alone (i.e. removed from packaging)
	Height:	41.4 in	49.3 in	
	Width:	30.9 in	62.4 in	
	Length:	33.7 in	84.8 in	
	Parameter:	Weights		
	Transport Weight:	405.4 lbs	Transport Weight = (Empty Pressure Vessel + Crating)	
	Operating Weight:	506.0 lbs	Operating Weight = (Pressure Vessel filled with Water)	
	HCAI NUMBER:	OPM-0520		

Additional Information:

MNPT = Male pipe thread

FNPT = Female pipe thread

Service valves for steam and water to be provided by others.

All utility supplies and connections, including final connections from service valves to equipment, are to be provided by others, per local code.

Check valve to be provided and installed by others on output steam line of each unit when multiple units are connected together.

All Belimed Equipment must be on and active prior to space balancing. Ambient conditions must not exceed 104°F.

TS-ELD-30_RevA



8351 PALMETTO COMMERCE PKWY SUITE 101
LADSON, SC 29456
TEL: (800) 457-4117 WWW.BELIMED.COM

TDS-ELD-30

REV: A

TECHNICAL SPECIFICATIONS

ELD 30 ELECTRIC STEAM GENERATOR

BELIMED EQUIPMENT TECHNICAL SPECIFICATIONS

DRAWN BY:

H. JACOBSON

SCALE:

NONE

DATE:

03/03/23

PAGE:

05 OF 05