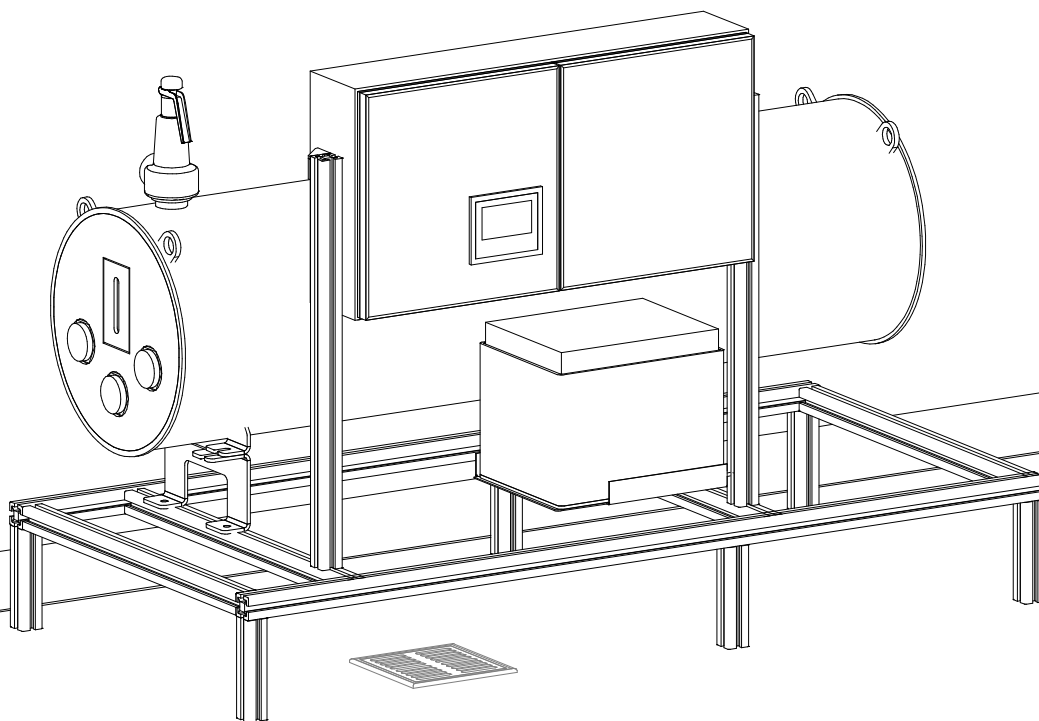


ELECTRIC CONDUIT FOR BOILER,  
BY OTHERS

CLEAN STEAM OUTPUT, BY OTHERS

SERVICE DISCONNECT, BY OTHERS

DEIONIZED WATER, BY OTHERS



8351 PALMETTO COMMERCE PKWY SUITE 101  
LADSON, SC 29456  
TEL: (800) 457-4117 WWW.BELIMED.COM

TDS-ELD-60

REV: A

3D VIEW

## ELD 60 ELECTRIC STEAM GENERATOR

TYPICAL INSTALLATION OF AN ELD 60 ELECTRIC  
STEAM GENERATOR

DRAWN BY:

H. JACOBSON

SCALE:

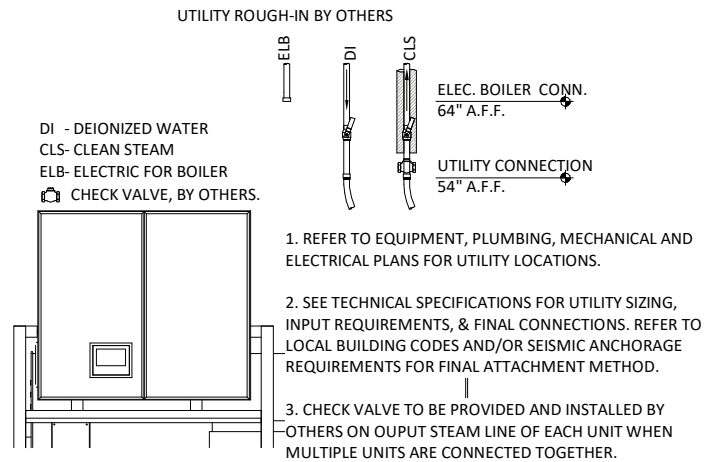
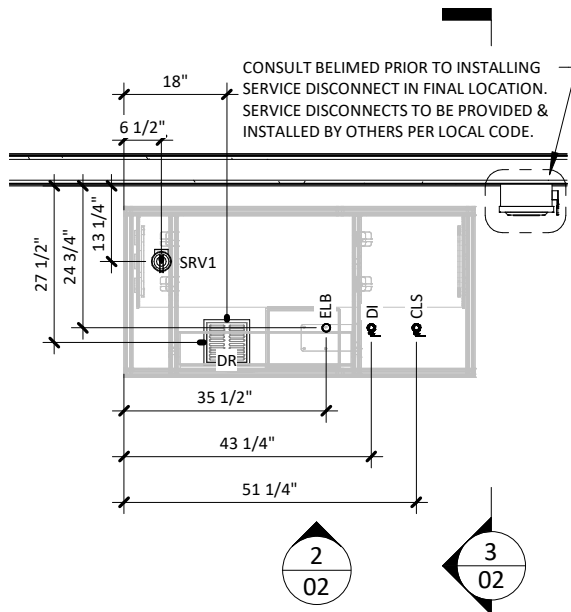
NONE

DATE:

03/03/23

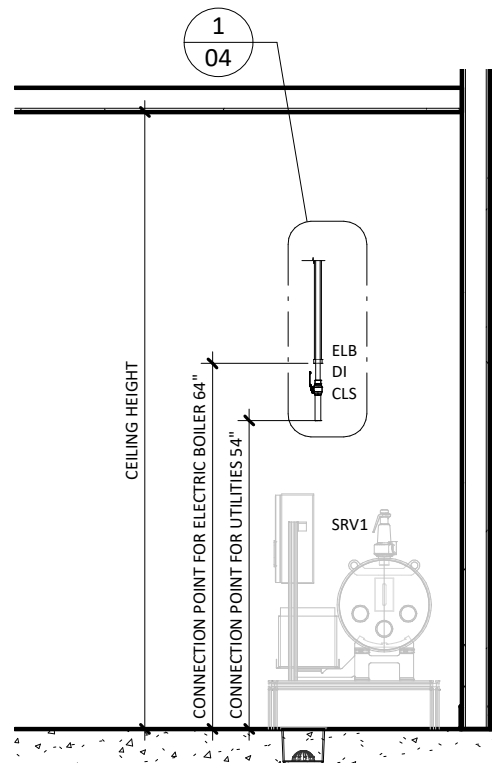
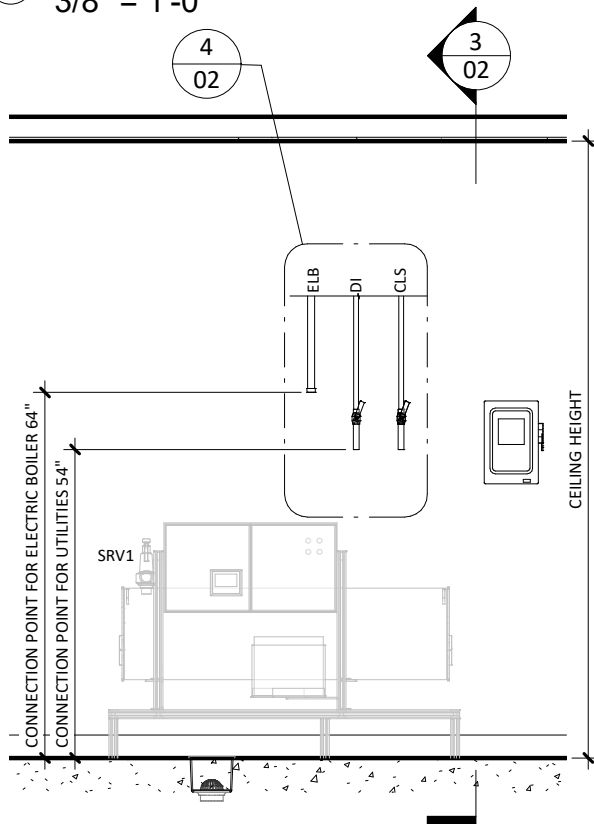
PAGE:

01 OF 05



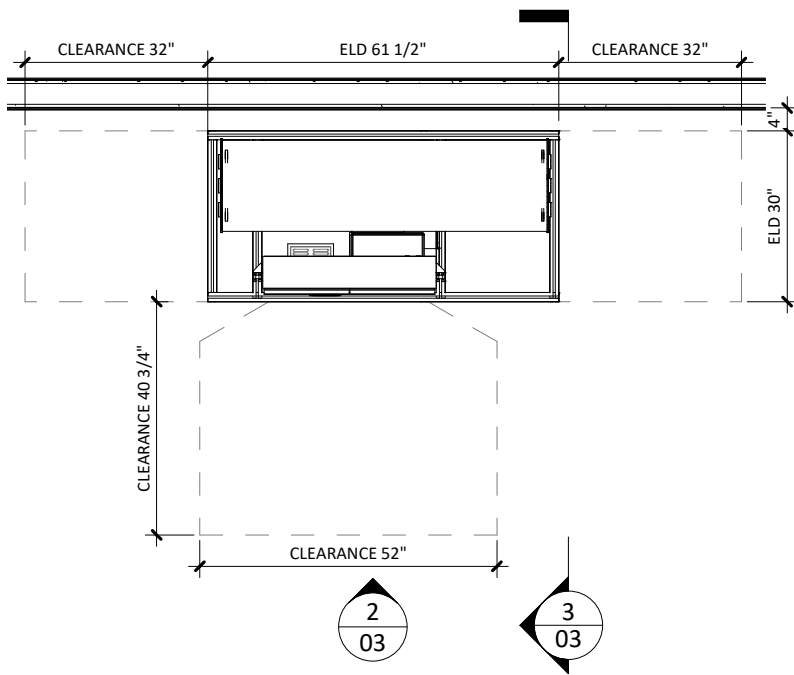
1 UTILITY LAYOUT  
3/8" = 1'-0"

4 ELD ELECTRIC GENERATOR TYP.  
UTILITY LAYOUT  
1/2" = 1'-0"

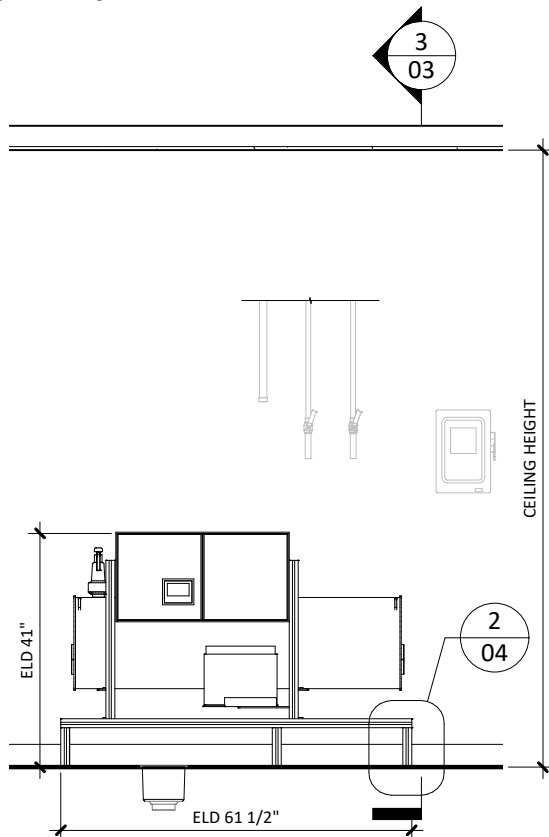


2 UTILITY FRONT ELEVATION  
3/8" = 1'-0"

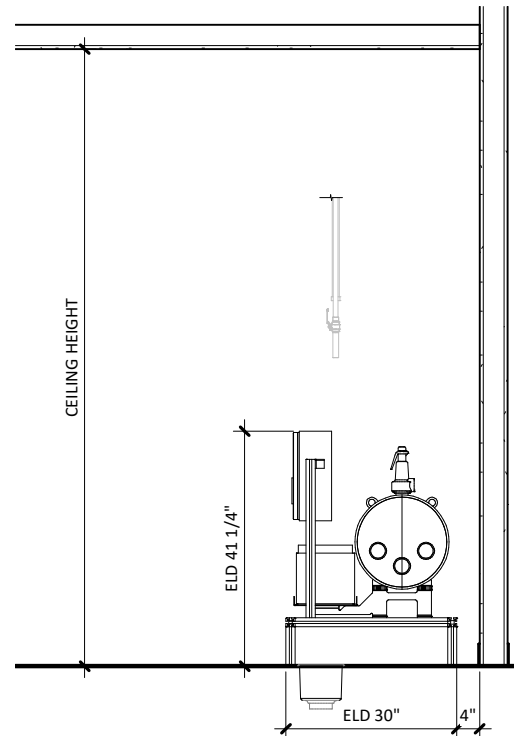
3 UTILITY SIDE ELEVATION  
3/8" = 1'-0"



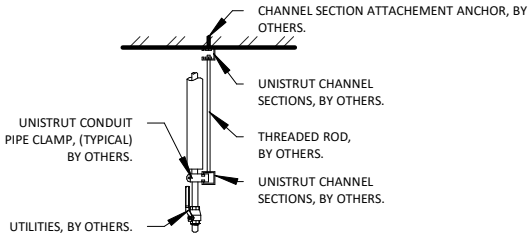
① EQUIPMENT PLACEMENT PLAN  
3/8" = 1'-0"



② EQUIPMENT FRONT ELEVATION  
3/8" = 1'-0"



③ EQUIPMENT SIDE ELEVATION  
3/8" = 1'-0"

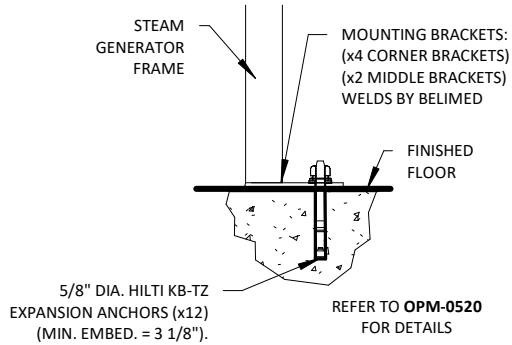


NOTE: REFER TO LOCAL BUILDING CODES AND/OR SEISMIC ANCHORAGE REQUIREMENTS FOR FINAL ATTACHMENT METHOD.

1. UTILITY ATTACHMENT ASSEMBLY SHALL FALL WITHIN THE FOOT PRINT OF THE SPECIFIED EQUIPMENT.
2. REFER TO EQUIPMENT PLUMBING, MECHANICAL AND ELECTRICAL PLANS FOR UTILITY LOCATIONS.
3. SEE TECHNICAL SPECIFICATIONS FOR UTILITY SIZING, INPUT REQUIREMENTS, AND FINAL CONNECTIONS.

## 1 TYP. UTILITY ATTACHMENT - CEILING

1/2" = 1'-0"



## 2 60 ELD SEISMIC ANCHORING DETAIL

1" = 1'-0"

# ELD 60 ELECTRIC STEAM GENERATOR - TECHNICAL SPECIFICATIONS

## REQUIRED INPUTS

Symbol	Description	Value	Utility Notes	Connection Method	Final Utility Conn. By:	
					Others	Belimed
TW	Utility:	Deionized Water	Deionized/RO water to produce clean steam.	Flex		X
	Connection Size:	1/2 in	Minimum Water Quality Specifications:			
	Building-Side Conn. Type:	FNPT	Conductivity (µS/cm) ≤ 5			
	Pressure:	Min: 29.0 psig Max: 72.5 psig	pH < 5.0 - 7.5			
	Operating Consumption:	1.8 gal/min	Hardness (mmol/L) ≤ 0.02			
	Operating Temperature:	Min: 41.0°F Max: 95.0°F	Chlorides (ppm) ≤ 1			
EL	Utility:	Electric	Service disconnect provided by others per local code.	Hard Wire	X	
	Connection Size:	1 1/4 in / EMT				
	Voltage (Nominal):	480 VAC				
	Voltage (Phase):	3 Phase				
	Voltage (Frequency):	60 Hz				
	Circuit Protection:	90 Amps				
	Current (Nominal):	84 Amps				
	Peak Consumption:	62.6 kW				

## STEAM OUTPUT

CLS	Utility:	Clean Steam Supply	Provide stainless steel piping routed from heat exchanger to equipment. Others are responsible for proper steam pipe insulation. Stainless steel pipe is 1 1/4"Ø.	Hard Pipe	X	
	Connection Size:	1 1/4 in				
	Building-Side Conn. Type:	FNPT				
	Output Pressure:	Min: 44.2 psig Max: 50.0 psig				
	Capacity:	7.8 lbs/min				

## ESTIMATED EMISSIONS

DR	Utility:	Open Drain	Provide drain pipe leading from heat exchanger to nearby drain. If there is no existing drain in the area, a new floor drain with trap must be provided.	3/4" Copper Pipe	X	
	Connection Size:	3/4 in				
	Building-Side Conn. Type:	FNPT				
	Discharge/Flow Rate:	2.9 gal/min				
	Connection Type:	Indirect Drain				
	Max. Discharge Temp.:	140°F				
SRV1	Utility:	Safety Relief Valve	Provide connection to safety relief valve and pipe to drain, atmosphere, or as required by local code.	Hard Pipe w/ Union	X	
	Connection Size:	3/4 in				
	Building-Side Conn. Type:	MNPT				
	Medium:	Heat Radiation				
	Radiation (Net):	1 kW				

## PHYSICAL SPECIFICATIONS

	<b>Parameter:</b>	<b>Carry-In Dimensions<sup>1</sup></b>	<b>Minimum Room Requirements</b>	<sup>1</sup> Machine alone (i.e. removed from packaging)
	<b>Height:</b>	41.4 in	49.3 in	
	<b>Width:</b>	30.9 in	62.4 in	
	<b>Length:</b>	61.4 in	124.4 in	
	<b>Parameter:</b>	<b>Weights</b>		
	<b>Transport Weight:</b>	535.5 lbs	Transport Weight = (Empty Pressure Vessel + Crating)	
	<b>Operating Weight:</b>	717.6 lbs	Operating Weight = (Pressure Vessel filled with Water)	
	<b>HCAI NUMBER:</b>	OPM-0520		

### Additional Information:

MNPT = Male pipe thread

FNPT = Female pipe thread

Service valves for steam and water to be provided by others.

All utility supplies and connections, including final connections from service valves to equipment, are to be provided by others, per local code.

Check valve to be provided and installed by others on output steam line of each unit when multiple units are connected together.

All Belimed Equipment must be on and active prior to space balancing. Ambient conditions must not exceed 104°F.

TS-ELD-60\_RevA



8351 PALMETTO COMMERCE PKWY SUITE 101  
LADSON, SC 29456  
TEL: (800) 457-4117 WWW.BELIMED.COM

TDS-ELD-60

REV: A

TECHNICAL SPECIFICATIONS

ELD 60 ELECTRIC STEAM GENERATOR

BELIMED EQUIPMENT TECHNICAL SPECIFICATIONS

DRAWN BY:

H. JACOBSON

SCALE:

NONE

DATE:

03/03/23

PAGE:

05 OF 05