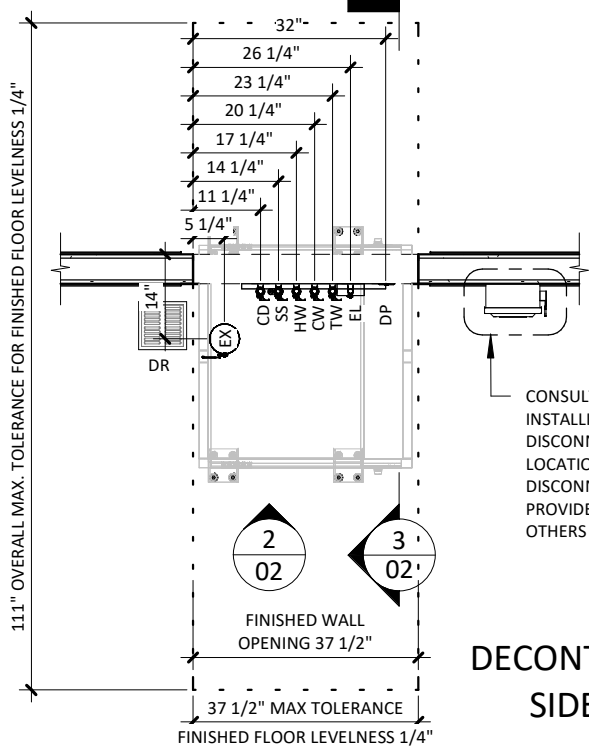



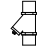
CLEAN SIDE



CONSULT BELIMED PRIOR TO INSTALLING SERVICE DISCONNECT IN FINAL LOCATION. SERVICE DISCONNECTS TO BE PROVIDED & INSTALLED BY OTHERS PER LOCAL CODE.

LEGEND

SYMBOLS

-  SERVICE SHUT-OFF VALVE, BY OTHERS
-  STEAM PARTICLE STRAINER, BY OTHERS

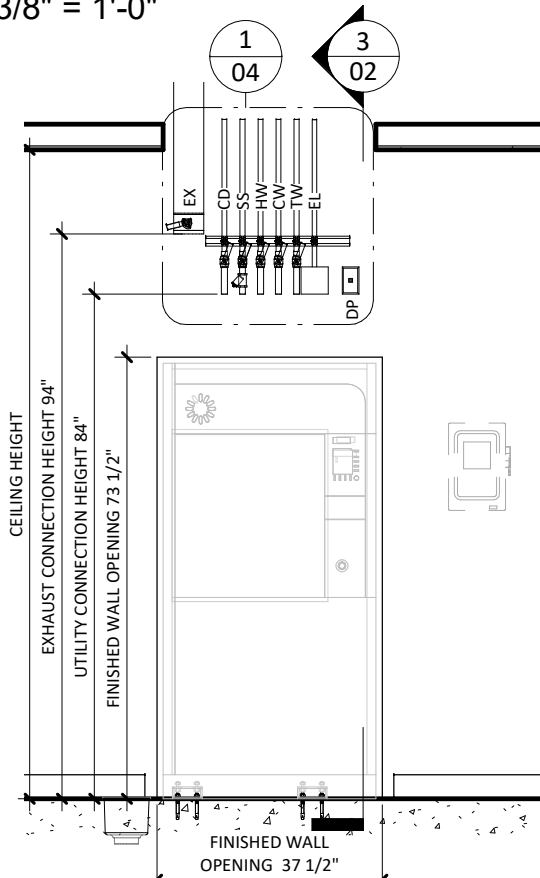


MANUAL DAMPER, BY OTHERS

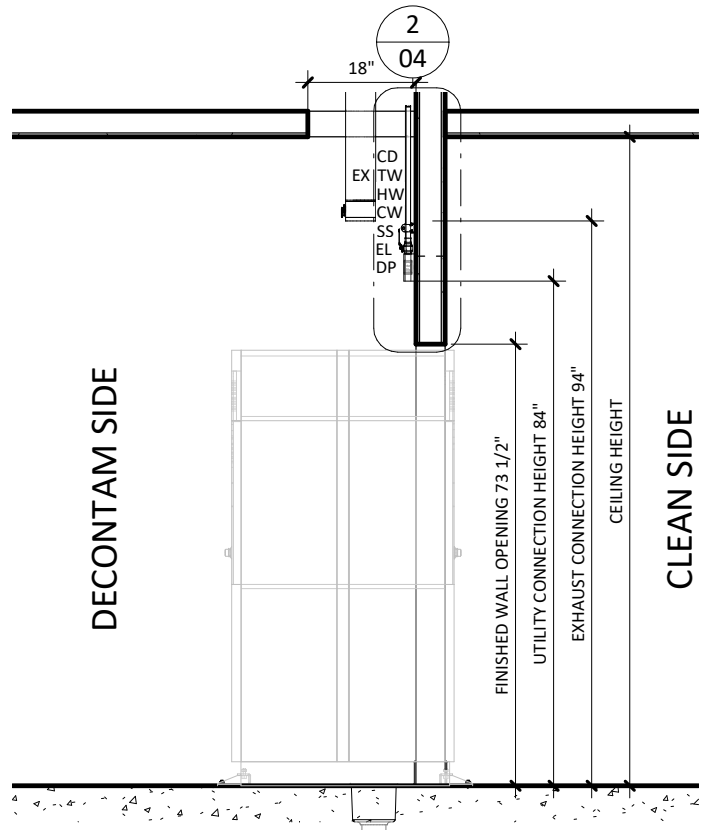
LINETYPES

- - - FINISHED FLOOR LEVEL

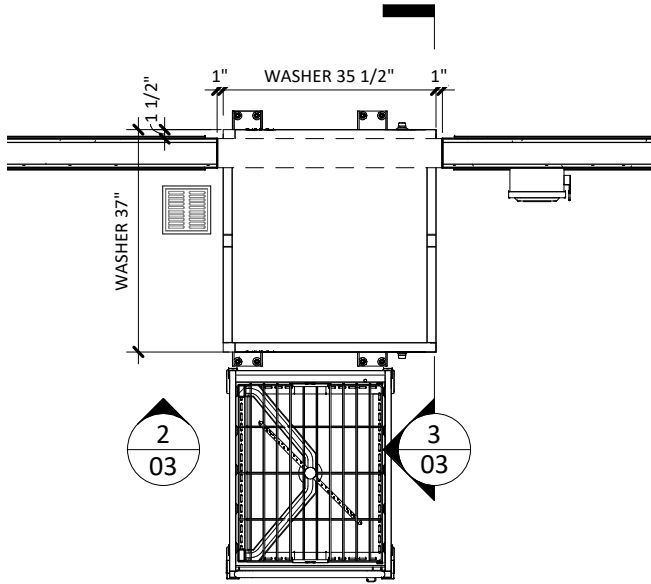
1 UTILITY LAYOUT
3/8" = 1'-0"



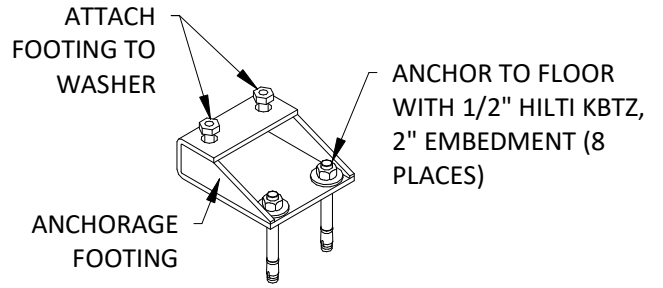
2 DECONTAM UTILITY ELEVATION
3/8" = 1'-0"



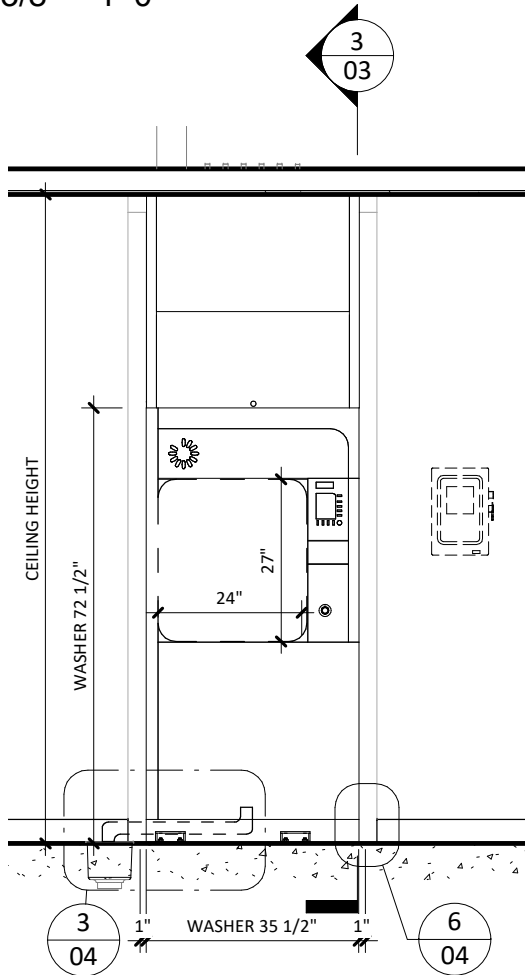
3 UTILITY SIDE ELEVATION
3/8" = 1'-0"



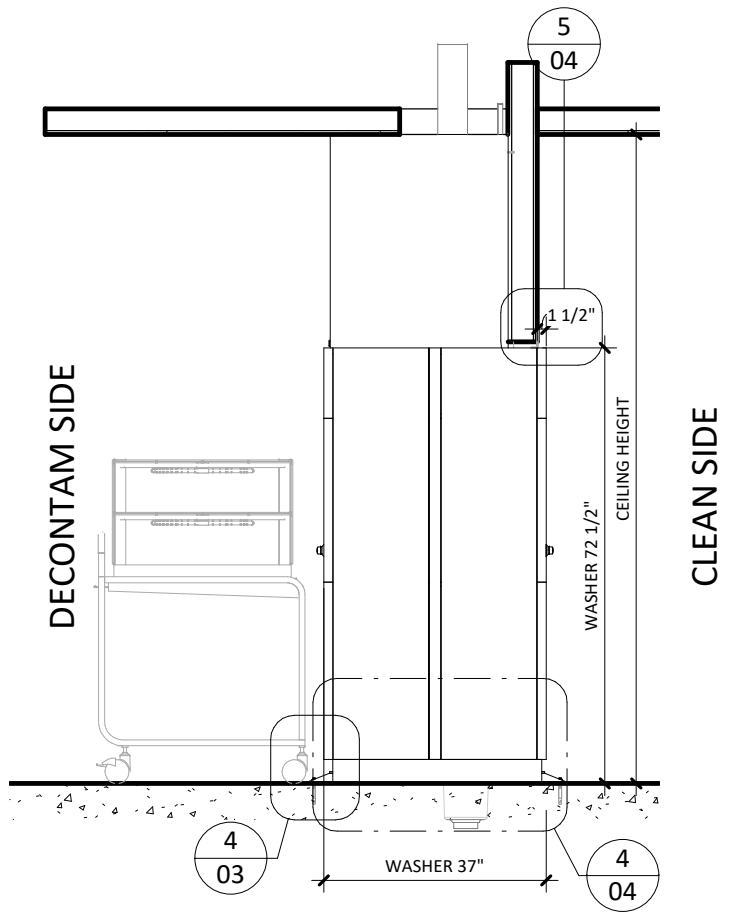
1 EQUIPMENT LAYOUT
3/8" = 1'-0"



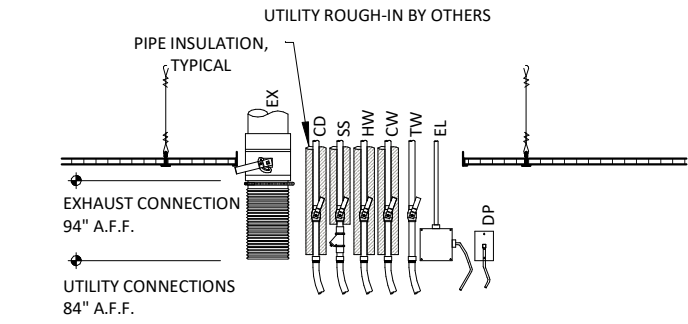
4 WD290 TYPICAL SEISMIC ATTACHMENT
1 1/2" = 1'-0"



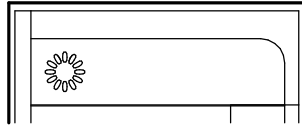
2 DECONTAM EQUIP. ELEV
3/8" = 1'-0"



3 EQUIPMENT SIDE ELEV.
3/8" = 1'-0"

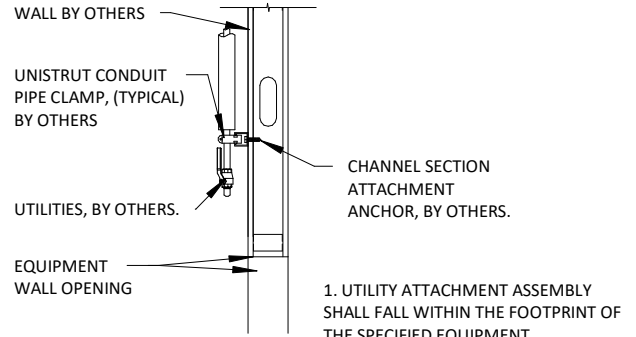


EX - EXHAUST
 CD - CONDENSATE RETURN
 SS - STEAM
 HW - HOT WATER
 CW - COLD WATER
 TW - TREATED WATER
 EL - ELECTRICAL (WASHER)
 DP - DATA PORT



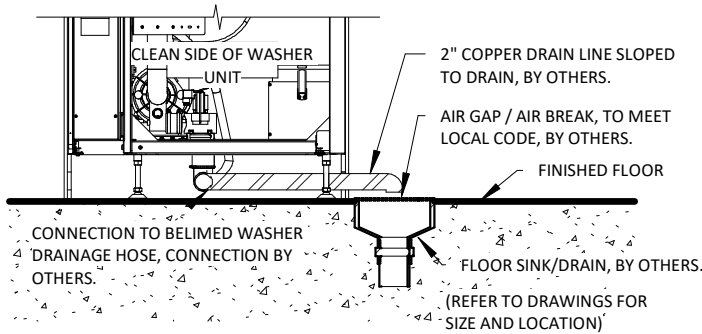
1. REFER TO EQUIPMENT, PLUMBING, MECHANICAL AND ELECTRICAL PLANS FOR UTILITY LOCATIONS.
2. SEE TECHNICAL SPECIFICATIONS FOR UTILITY SIZING, INPUT REQUIREMENTS AND FINAL CONNECTIONS.

① **WD290 TYP. UTILITY LAYOUT - STEAM**
 1/2" = 1'-0"

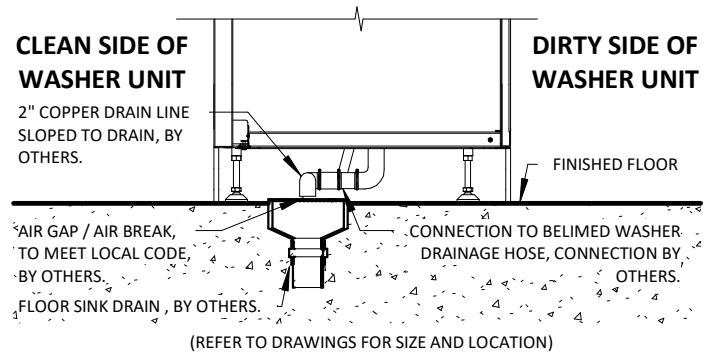


NOTE: REFER TO LOCAL BUILDING CODES AND/OR SEISMIC ANCHORAGE REQUIREMENTS FOR FINAL ATTACHMENT METHOD.

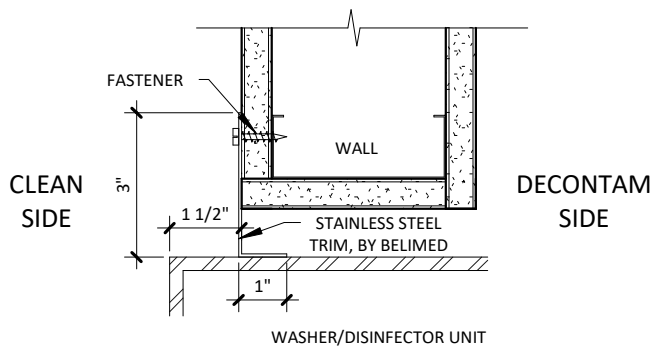
② **TYP. UTILITY ATTACHMENT - WALL**
 1/2" = 1'-0"



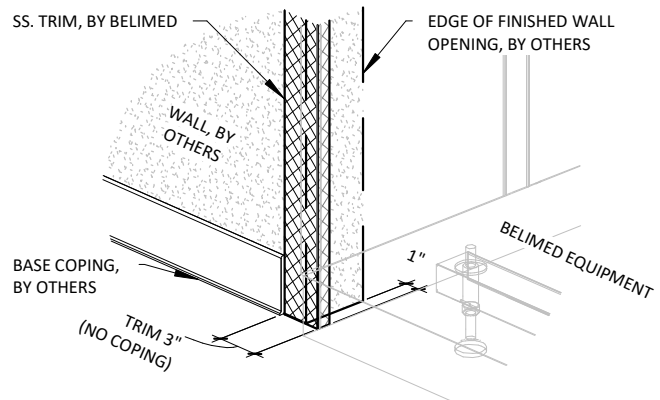
③ **WD - TYP. WASHER DRAINPIPE ASSEMBLY**
 1/2" = 1'-0"



④ **TYPICAL SIDE VIEW - WASHER DRAIN DETAIL**
 1/2" = 1'-0"



⑤ **TRIM ATTACHMENT - 290**
 3" = 1'-0"



⑥ **BASE COPING AT WALL OPENING**
 1" = 1'-0"

WD290 WASHER/DISINFECTOR - TECHNICAL SPECIFICATIONS

REQUIRED INPUTS

Symbol	Description	Value	Utility Notes	Connection Method	Final Utility Conn. By:	
					Others	Belimed
SS	Utility:	Steam Supply	Steam must be dry, saturated, and free from all impurities such as gases, oil, dirt, or other contaminants. Provide steam strainer with #100 mesh size. All steam drops must be piped from top of steam supply line.	Flex		X
	Connection Size/Type:	1/2 inch MNPT				
	Pressure:	Min: 50 Max: 65 psig				
	Peak Consumption:	4.2 lbs/min				
	*Consumption per Load:	Min: 15 Max: 22 lbs				
HW	Utility:	Hot Water	For required water quality specifications, refer to Belimed document "MeTa Water Requirements EN-US"	Flex		X
	Connection Size/Type:	3/4 inch MNPT				
	Pressure:	Min: 29 Max: 87 psig				
	Peak Consumption:	10.6 gal/min				
	*Consumption per Load:	Min: 16 Max: 18.2 gal				
CW	Utility:	Cold Water	For required water quality specifications, refer to Belimed document "MeTa Water Requirements EN-US"	Flex		X
	Connection Size/Type:	3/4 inch MNPT				
	Pressure:	Min: 29 Max: 87 psig				
	Peak Consumption:	10.6 gal/min				
	*Consumption per Load:	Min: 8.0 Max: 9.1 gal				
TW	Utility:	Treated Water	For required water quality specifications, refer to Belimed document "MeTa Water Requirements EN-US"	Flex		X
	Connection Size/Type:	3/4 inch MNPT				
	Pressure:	Min: 29 Max: 87 psig				
	Operating Consumption:	Min: 2.0 Max: 10.6 gal/min				
	*Consumption per Load:	Min: 8.0 Max: 9.1 gal				
EL	Utility:	Electric	Peak consumption occurs during drying portion of cycle. Service disconnect provided by others per local code.	Hard Pipe		X
	Connection Type:	Hard wire within junction box				
	Voltage (Phase):	3 Phase				
	Voltage (Nominal):	208 VAC				
	Voltage (Frequency):	60 Hz				
	Circuit Protection:	40 Amps				
Peak Consumption:	26.7 Amps					
	*Consumption per Load:	Min: 2.8 Max: 3.0 kW-h				
DP	Utility:	Data Port	Location: Preferred Ethernet port location is in the enclosed service area of the washer/disinfector or within 5 ft of machine			X
	Connection Type:	RJ45 Receptacle				
	Connection Quantity:	One (1) RJ45 Ethernet port per mach.				
	Facility Wiring:	Cat-5 or better				
	Final Connection:	Patch cables for final conn. provided				
	Port IP Setup:	Each RJ45 requires static IP address				

ESTIMATED EMISSIONS

CD	Utility:	Condensate	Condensate removal by customer, per local code.	Flex		X
	Connection Size/Type:	3/4 inch MNPT				
DR	Utility:	Open Drain	Provide flush mounted floor sink and trap.	2" copper pipe		X
	Connection Size:	2.0 inch				
	Discharge Flow Rate:	30.0 gal/min				
	Connection Type:	Indirect Drain				
EX	Medium:	Air Exhaust	Discharged air is at 100% humidity, others must provide proper drainage upstream as needed. Others to provide manual style manual damper at each exhaust connection point.	Flex		X
	Connection Size:	5 inch OD				
	Peak Flow Rate:	147-206 cfm				
	Minimum Duct Diameter:	5 inch				
	Duct Materials (in order of rec. use):	stainless steel, galvanized steel, polyethylene, or aluminum				
	Medium:	Heat Radiation	Free Standing Machine. Variation due to program variability in Ao value, dry time, and dry temperatures.			
	Radiation (Net):	500 W				
	Radiation (Tolerance):	+/- 200 W				
	Medium:	Noise Radiation				
	Max. Radiation (Net):	65-72 dBA				

PHYSICAL SPECIFICATIONS

	Parameter:	Carry-In Dimensions¹	Minimum door width 40" required for installation transport ¹ Machine alone (i.e. removed from packaging)
	Height:	72.5 in	
	Width:	35.5 in	
	Length:	37.0 in	
	Parameter:	Weights	Transport Weight = (Machine + Crating) Operating Weight = (Machine + Water)
	Transport Weight:	900 lbs	
	Operating Weight:	860 lbs	
	HCAI NUMBER:	OPM-0130-13	

* Values are for an "Instruments - General Instrument Cycle" with 888 detergent. Minimum consumption values are measured with an empty rack. Maximum consumption values are measured with a fully loaded rack. Values will vary with rack size, load size, utility inputs, detergents and cycle setup.

Additional Information:

For automated systems, additional utilities may be required. Consult site drawings for specific details.

MNPT = Male Pipe Thread

Maximum finished floor level tolerance is 1/4" for washer and conveyor area.

All utility supplies and connections are to be provided by others, per local code.

TS-WD290-09_RevL