

TREATED WATER, BY OTHERS

COLD WATER, BY OTHERS

HOT WATER, BY OTHERS

SHUT-OFF VALVES, BY OTHERS

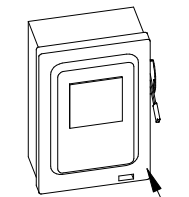
JUNCTION BOX, BY OTHERS

AIR EXHAUST DUCT, BY OTHERS

DATA PORT, BY OTHERS

STAINLESS STEEL ENCLOSURE, BY BELIMED

STAINLESS STEEL TRIM, BY BELIMED

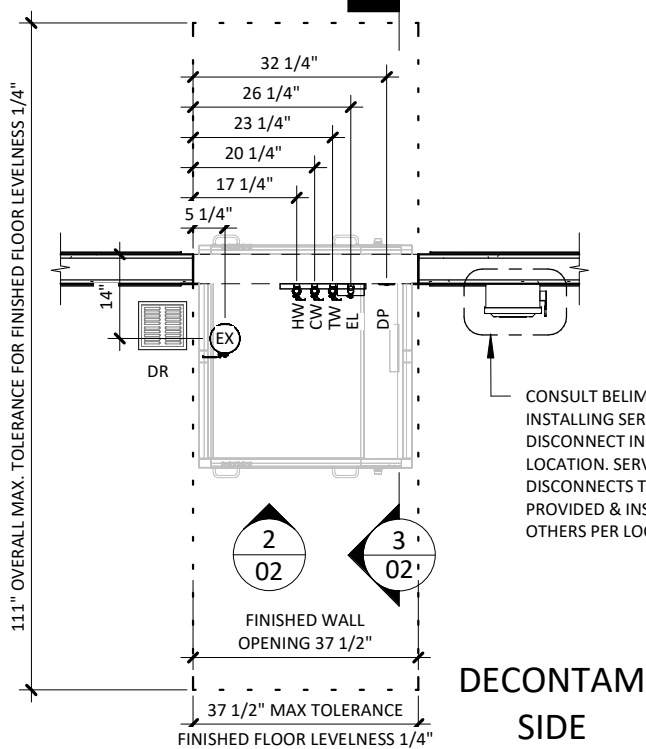


SERVICE DISCONNECT, BY OTHERS

NOTE: SERVICE DISCONNECT LOCATION MAY VARY.

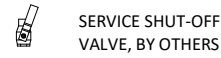
DRAIN, BY OTHERS. LOCATION MAY VARY

CLEAN SIDE

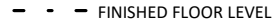


LEGEND

SYMBOLS

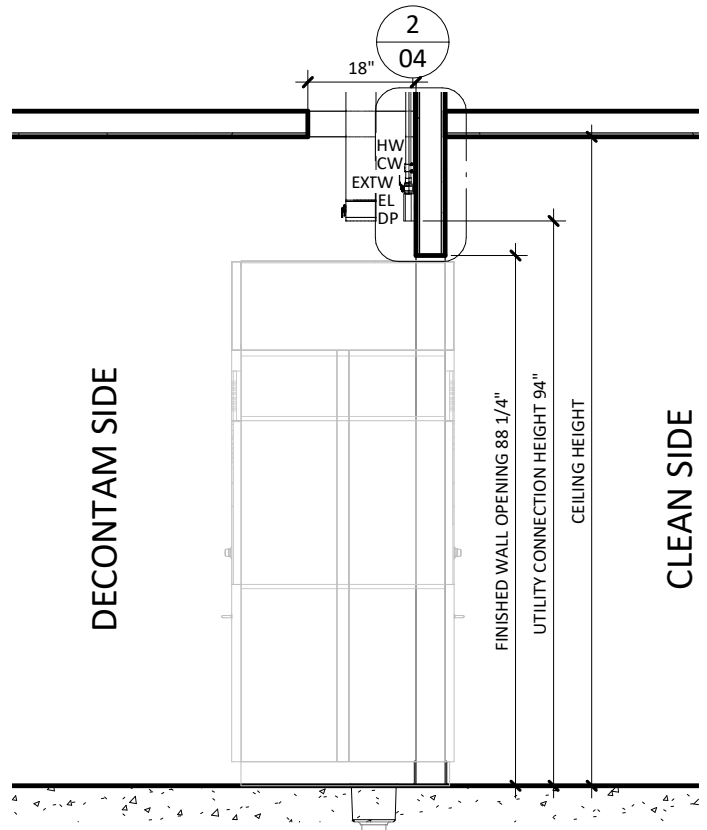
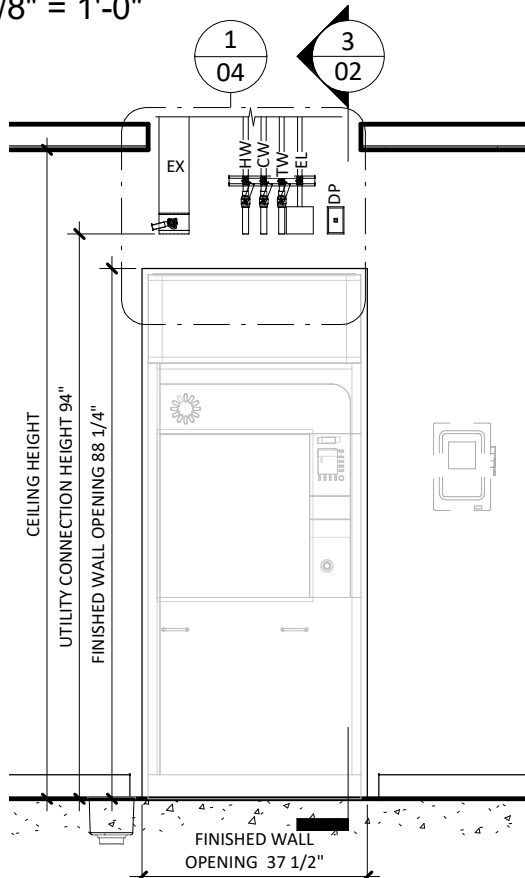


LINETYPES



1 UTILITY LAYOUT

3/8" = 1'-0"

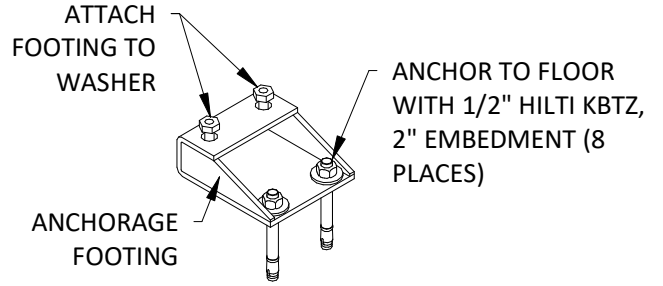
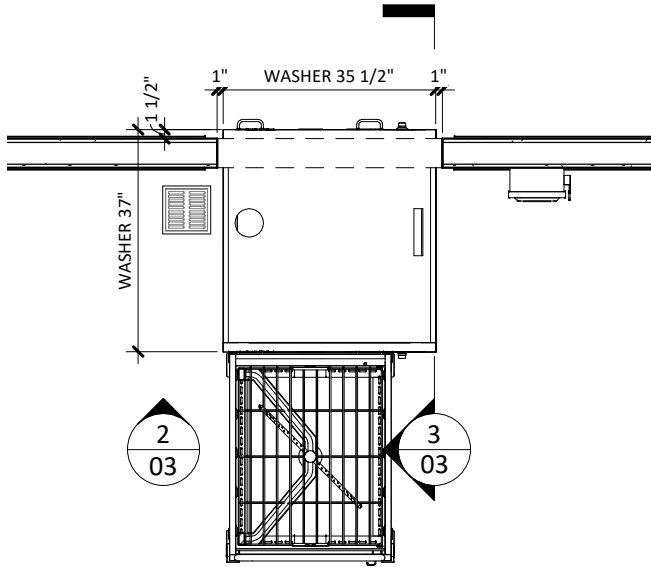


2 DECONTAM UTILITY ELEVATION

3/8" = 1'-0"

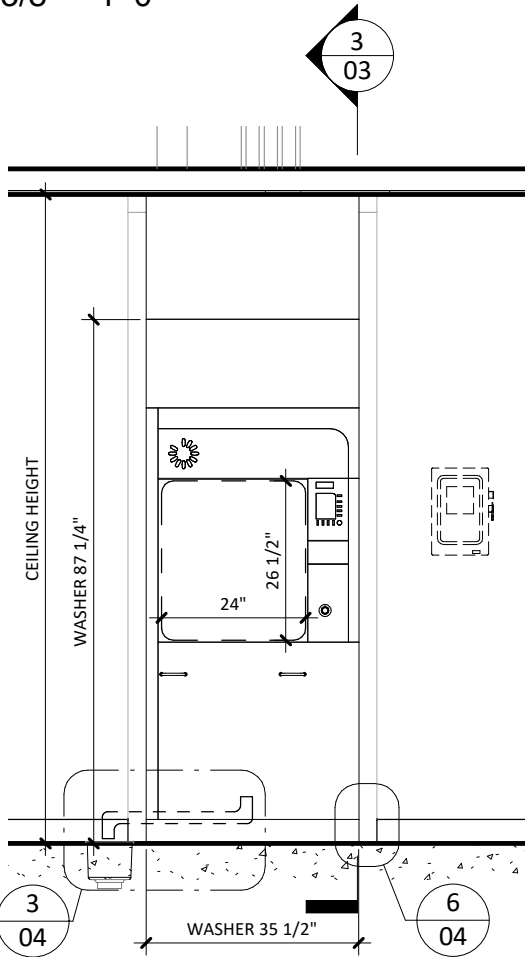
3 UTILITY SIDE ELEVATION

3/8" = 1'-0"

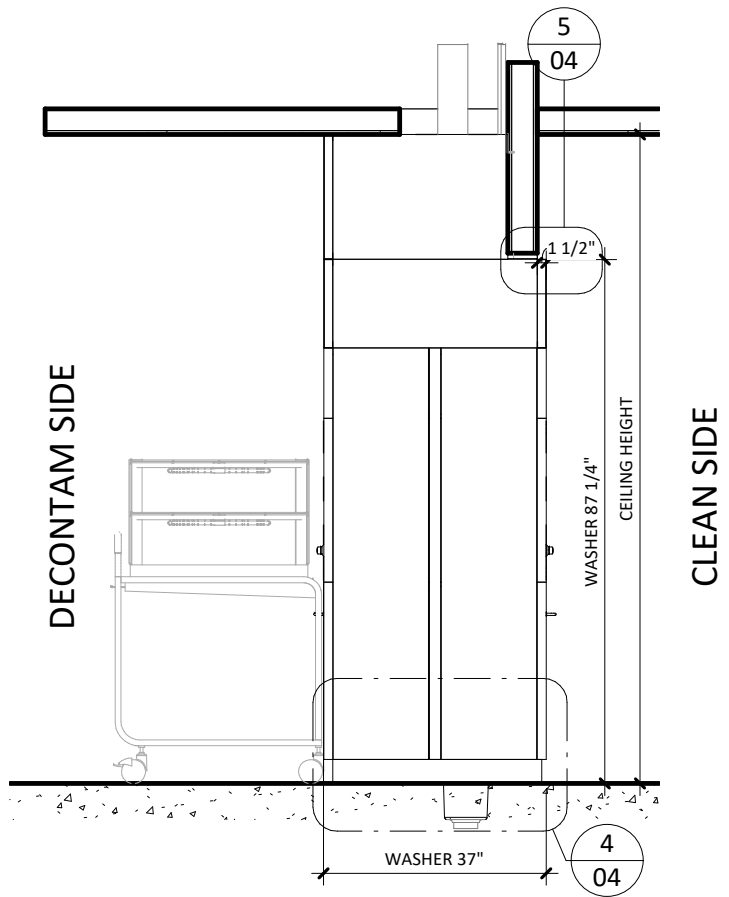


1 EQUIPMENT LAYOUT
3/8" = 1'-0"

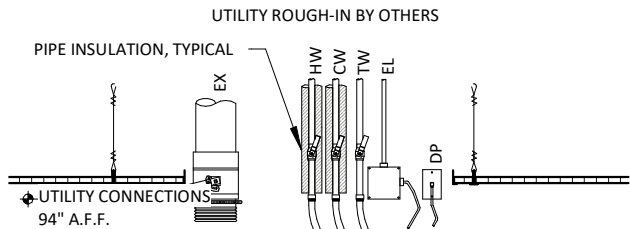
4 WD290 TYPICAL SEISMIC ATTACHMENT
1 1/2" = 1'-0"



2 DECONTAM EQUIP. ELEV
3/8" = 1'-0"

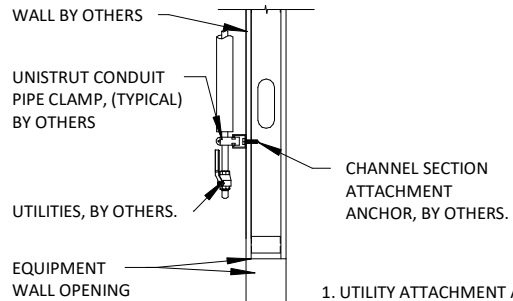


3 EQUIPMENT SIDE ELEV.
3/8" = 1'-0"



EX - EXHAUST
 HW - HOT WATER
 CW - COLD WATER
 TW - TREATED WATER
 EL - ELECTRICAL (WASHER)
 DP - DATA PORT

1. REFER TO EQUIPMENT, PLUMBING, MECHANICAL AND ELECTRICAL PLANS FOR UTILITY LOCATIONS.
2. SEE TECHNICAL SPECIFICATIONS FOR UTILITY SIZING, INPUT REQUIREMENTS AND FINAL CONNECTIONS.



1. UTILITY ATTACHMENT ASSEMBLY SHALL FALL WITHIN THE FOOTPRINT OF THE SPECIFIED EQUIPMENT.
2. REFER TO EQUIPMENT PLUMBING, MECHANICAL AND ELECTRICAL PLANS FOR UTILITY LOCATIONS.
3. SEE TECHNICAL SPECIFICATIONS FOR UTILITY SIZING, INPUT REQUIREMENTS, AND FINAL CONNECTIONS.

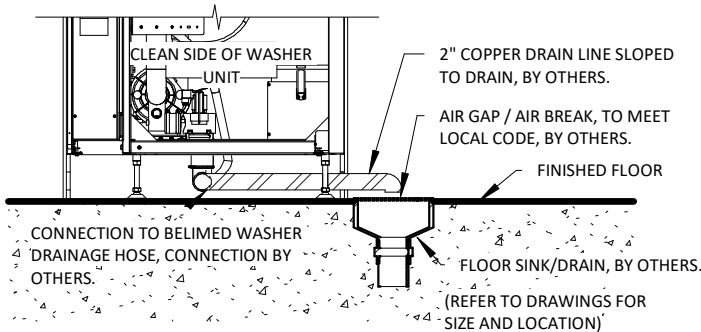
NOTE: REFER TO LOCAL BUILDING CODES AND/OR SEISMIC ANCHORAGE REQUIREMENTS FOR FINAL ATTACHMENT METHOD.

WD290 TYP. UTILITY LAYOUT - ELECTRIC

1 1/2" = 1'-0"

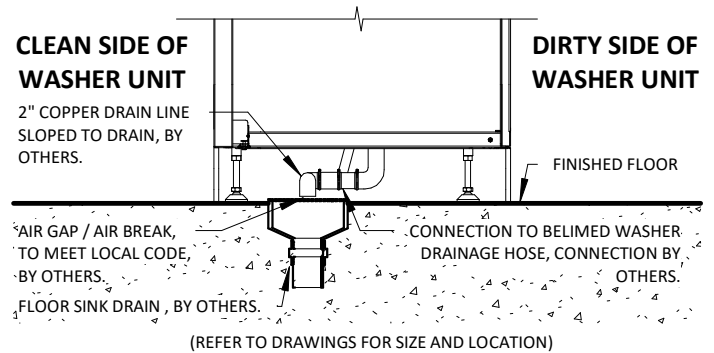
TYP. UTILITY ATTACHMENT - WALL

2 1/2" = 1'-0"



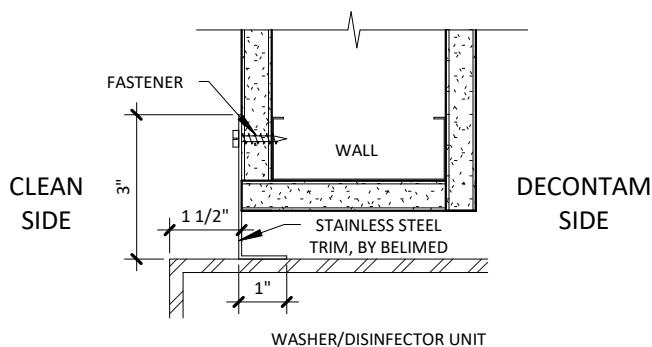
WD - TYP. WASHER DRAINPIPE ASSEMBLY

3 1/2" = 1'-0"



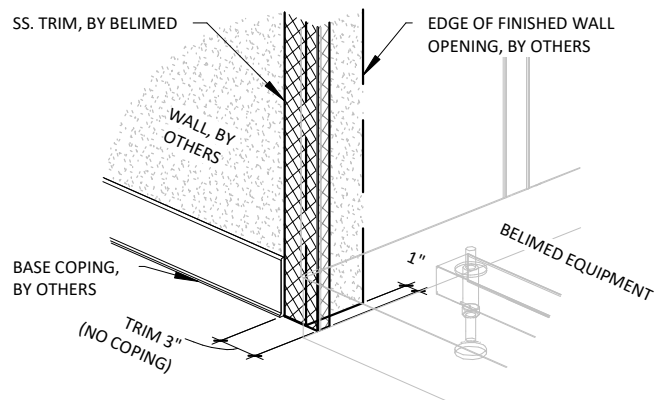
TYPICAL SIDE VIEW - WASHER DRAIN DETAIL

4 1/2" = 1'-0"



TRIM ATTACHMENT - 290E

5 3" = 1'-0"



BASE COPING AT WALL OPENING

6 1" = 1'-0"

WD290E WASHER/DISINFECTOR - TECHNICAL SPECIFICATIONS

REQUIRED INPUTS

Symbol	Description	Value	Utility Notes	Connection Method	Final Utility Conn. By:	
					Others	Belimed
HW	Utility:	Hot Water	For required water quality specifications, refer to Belimed document "MeTa Water Requirement EN-US"	Flex		X
	Connection Size/Type:	3/4 inch MNPT				
	Pressure:	Min: 29 Max: 87 psig				
	Peak Consumption:	10.6 gal/min				
	*Consumption per Load:	Min: 16 Max: 18.2 gal				
CW	Utility:	Cold Water	For required water quality specifications, refer to Belimed document "MeTa Water Requirement EN-US"	Flex		X
	Connection Size/Type:	3/4 inch MNPT				
	Pressure:	Min: 29 Max: 87 psig				
	Peak Consumption:	10.6 gal/min				
	*Consumption per Load:	Min: 8.0 Max: 9.1 gal				
TW	Utility:	Treated Water	For required water quality specifications, refer to Belimed document "MeTa Water Requirement EN-US"	Flex		X
	Connection Size/Type:	3/4 inch MNPT				
	Pressure:	Min: 29 Max: 87 psig				
	Operating Consumption:	Min: 2.0 Max: 10.6 gal/min				
	*Consumption per Load:	Min: 8.0 Max: 9.1 gal				
EL	Utility:	Electric	Peak consumption occurs during the heating of water when the pump is active. Service disconnect provided by others per local code.	Hard Wired		X
	Connection Type:	Hard wire within junction box				
	Voltage (Phase):	3 Phase				
	Voltage (Nominal):	208 VAC				
	Voltage (Frequency):	60 Hz				
	Circuit Protection:	60 Amps				
	Peak Consumption:	46.5 Amps				
DP	Utility:	Data Port	Location: Preferred Ethernet port location is in the enclosed service area of the washer/disinfector or within 5 ft of machine			X
	Connection Type:	RJ45 Receptacle				
	Connection Quantity:	One (1) RJ45 Ethernet port per mach.				
	Facility Wiring:	Cat-5 or better				
	Final Connection:	Patch cables for final conn. provided				
	Port IP Setup:	Each RJ45 requires static IP address				

ESTIMATED EMISSIONS

DR	Utility:	Open Drain	Provide flush mounted floor sink and trap.	2" copper pipe		X
	Connection Size:	2.0 inch				
	Discharge Flow Rate:	30.0 gal/min				
	Connection Type:	Indirect Drain				
EX	Medium:	Air Exhaust	Discharged air is at 100% humidity, others must provide proper drainage upstream as needed. Others to provide manual style manual damper at each exhaust connection point.	Flex		X
	Connection Size:	5 inch OD				
	Peak Flow Rate:	250 cfm ± 10%				
	Minimum Duct Diameter:	5 inch				
	Duct Materials (in order of rec. use):	stainless steel, galvanized steel, polyethylene, or aluminum				
	Medium:	Heat Radiation	Free Standing Machine. Variation due to program variability in Ao value, dry time, and dry temperatures.			
	Radiation (Net):	500 W				
	Radiation (Tolerance):	+/- 200 W				
	Medium:	Noise Radiation				
	Max. Radiation (Net):	65-72 dBA				

PHYSICAL SPECIFICATIONS

	Parameter:	Carry-In Dimensions¹	Minimum door width 40" required for installation transport ¹ Machine alone (i.e. removed from packaging)
	Height:	72.5 in	
	Width:	35.5 in	
	Length:	37.0 in	
	Parameter:	Weights	
	Transport Weight:	1150 lbs	Transport Weight = (Machine + Crating)
	Operating Weight:	1100 lbs	Operating Weight = (Machine + Water)
	HCAI NUMBER:	OPM-0130-13	

* Values are for an "Instruments - General Instrument Cycle" with 888 detergent. Minimum consumption values are measured with an empty rack. Maximum consumption values are measured with a fully loaded rack. Values will vary with rack size, load size, utility inputs, detergents and cycle setup.

Additional Information:

For automated systems, additional utilities may be required. Consult site drawings for specific details.

MNPT = Male Pipe Thread

Maximum finished floor level tolerance is 1/4" for washer and conveyor area.

All utility supplies and connections are to be provided by others, per local code.

TS-WD290-09E_RevN